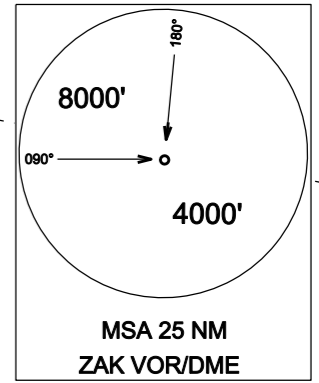
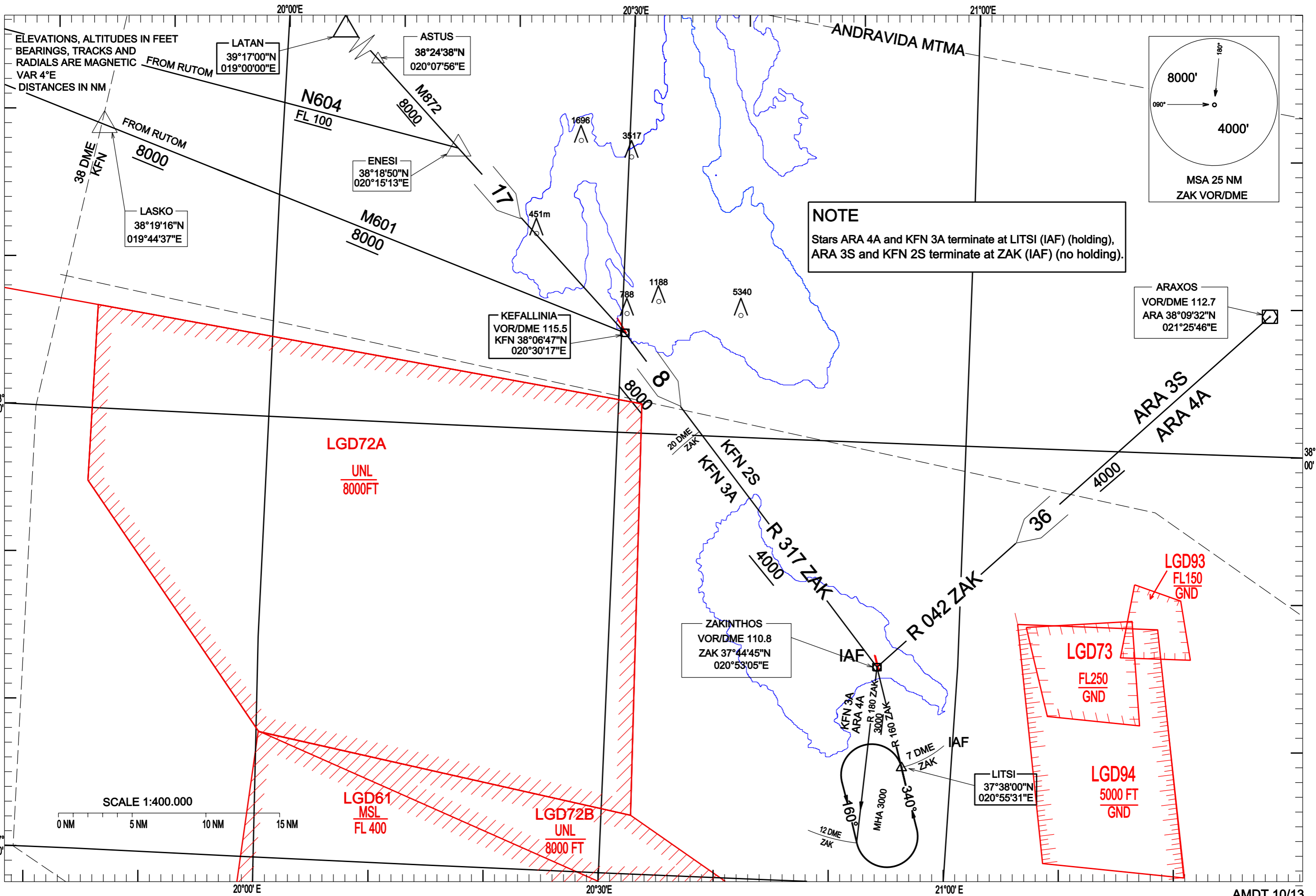


STANDARD ARRIVAL CHART
INSTRUMENT (STAR) - ICAO

TRANSITION ALTITUDE
8000 ft

TWR 125.425

ZAKINTHOS / DIONYSIOS SOLOMOS
VOR/DME - RWY 34
ARA 4A, ARA 3S, KFN 3A, KFN 2S



ARAXOS
VOR/DME 112.7
ARA 38°09'32"N
021°25'46"E

ZAKINTHOS
VOR/DME 110.8
ZAK 37°44'45"N
020°53'05"E

LITSI
37°38'00"N
020°55'31"E

KEFALLINIA
VOR/DME 115.5
KFN 38°06'47"N
020°30'17"E

ASTUS
38°24'38"N
020°07'56"E

ENESI
38°18'50"N
020°15'13"E

LATAN
39°17'00"N
019°00'00"E

LASKO
38°19'16"N
019°44'37"E

LGD93
FL150
GND

LGD73
FL250
GND

LGD94
5000 FT
GND

LGD72B
UNL
8000 FT

LGD61
MSL
FL 400

LGD72A
UNL
8000FT

NOTE
Stars ARA 4A and KFN 3A terminate at LITSI (IAF) (holding),
ARA 3S and KFN 2S terminate at ZAK (IAF) (no holding).