

STANDARD ARRIVAL CHART - INSTRUMENT (STAR) - ICAO

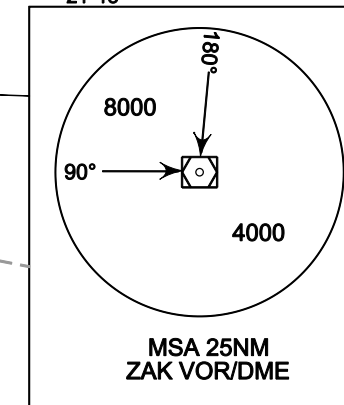
ZAKINTHOS/DIONISIOS SOLOMOS VOR/DME RWY 16

ATIS 127.050 ANDRAVIDA APP 121.125 TWR 125.425

SUPPLEMENTARY STARS: LASKO 1B LASKO 2C ASTUS 2A ASTUS 1B ASTUS 2C

TRANSITION ALTITUDE 8000ft

ELEVATIONS, ALTITUDES ARE IN FEET BEARINGS, TRACKS AND RADIALS ARE MAGNETIC DISTANCES ARE IN NM VAR 4°E/2013 - Annual Change 5'57"



NOTE ASTUS 2A ASTUS 2C and LASKO 2C terminate at ZAK IAF (holding). ASTUS 1B and LASKO 1B terminate at AKETO IAF (holding).

