

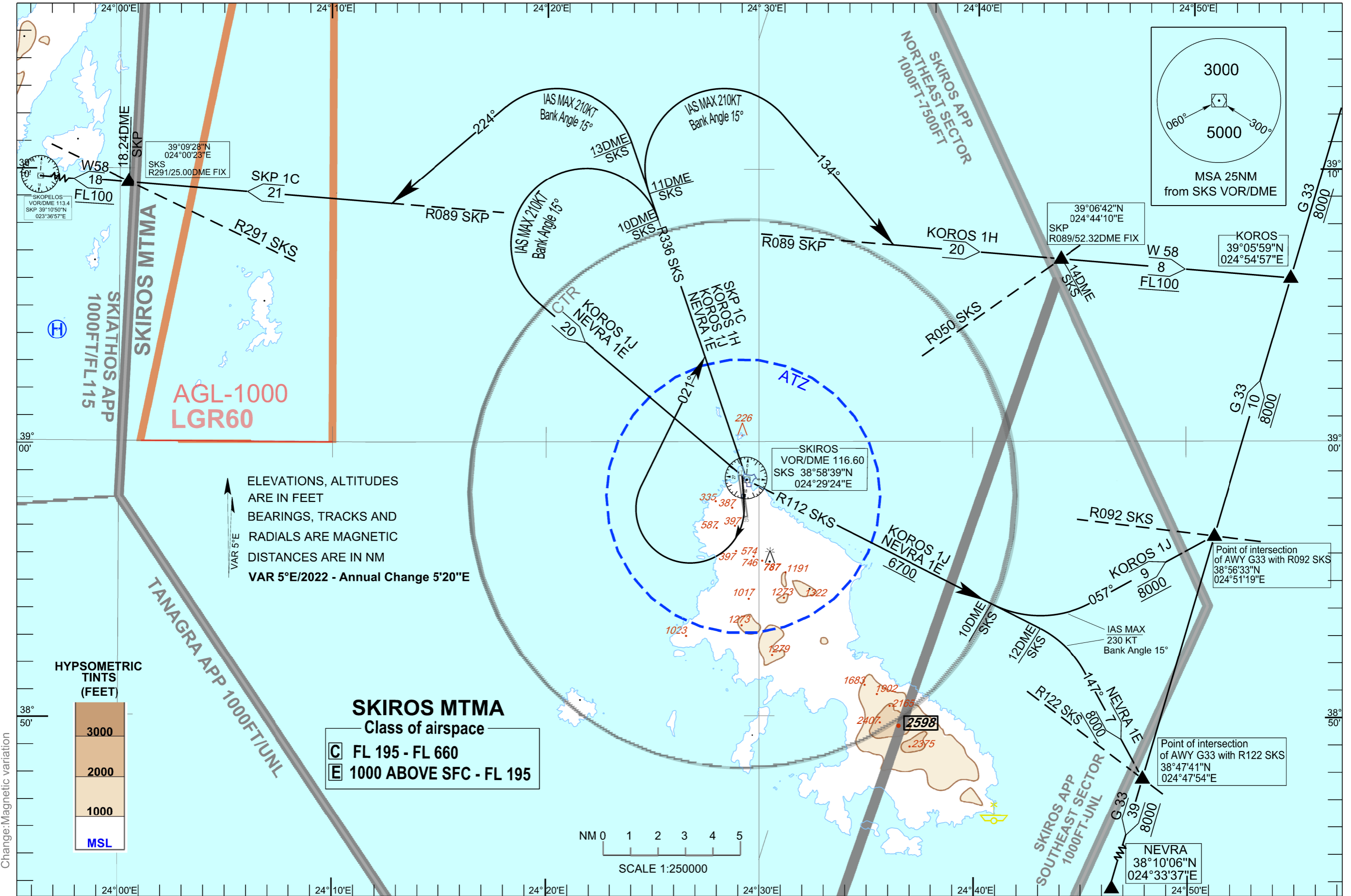
STANDARD DEPARTURE CHART -  
INSTRUMENT (SID) - ICAO

TRANSITION ALTITUDE  
8000 ft

TWR 123.200 257.800  
APP 123.200 362.300  
ACC 132.375 133.575

SKIROS  
VOR/DME  
RWY 17

SKP 1C KOROS 1H KOROS 1J NEVRA 1E



**SKIROS AIRPORT**

SIDs RWY17

SKS VOR/DME

SKP 1C, KOROS 1H, KOROS 1J, NEVRA 1E

**GENERAL**

1. **When for these SIDs an altitude higher than the transition altitude is designated, then an equivalent flight level shall be specified by ATC unit.**
2. **Coordinates of DER 17 in WGS-84: 38° 57' 40.55"N 024° 29' 17.01"E, DER 17 Elevation 18m.**
3. **Due to high terrain South and South West of Aerodrome a minimum visibility of 10 km and ceiling of 1600ft is required.**
4. **Remain in visual contact with terrain during initial climb and right turn until intercepting RDL 336 SKS.**

**Caution spot heights:**

Bearing 202 DEG and distance 0,80 NM from DER 17 at 397 FT AMS.

Bearing 187 DEG and distance 1,65 NM from DER 17 at 397 FT AMS.

Bearing 166 DEG and distance 1,87 NM from DER 17 at 574 FT AMS.

Bearing 158 DEG and distance 2,10 NM from DER 17 at 745 FT AMS.

Bearing 152 DEG and distance 2,19 NM from DER 17 at 787 FT AMS.

Bearing 228 DEG and distance 1,29 NM from DER 17 at 587 FT AMS.

Bearing 258 DEG and distance 0,45 NM from DER 17 at 387 FT AMS.

Bearing 276 DEG and distance 1,05 NM from DER 17 at 335 FT AMS.

Bearing 174 DEG and distance 3,33 NM from DER 17 at 1.017 FT AMS.

Bearing 153 DEG and distance 3,64 NM from DER 17 at 1.273 FT AMS.

Bearing 166 DEG and distance 5,52 NM from DER 17 at 1.279 FT AMS.

Bearing 201 DEG and distance 5,18 NM from DER 17 at 1.023 FT AMS.

**SKP 1C**

PDG: 4,9% (298 ft/NM) up to the minimum en-route altitude.

"After take off turn right remaining in visual contact with terrain until intercepting RDL 336 SKS. Then climb on RDL 336 SKS. At RDL 336 SKS / 13 DME Fix turn left (IAS MAX 210 KT, Bank angle 15°) to track 224° intercept and follow RDL 089 SKP to join AWY W58 and proceed to SKP VOR/DME. Arrange to cross FL100 of altitude or above at RDL 291 SKS / 25 DME Fix (or RDL 089 SKP/ 18,24 DME or in coordinates WGS-84 : 39° 09' 27.57"N, 024° 00' 22.86"E).

**KOROS 1H**

PDG: 4,9% (298 ft/NM) up to the minimum en-route altitude.

"After take off turn right remaining in visual contact with terrain until intercepting RDL 336 SKS. Then climb on RDL 336 SKS. At RDL 336 SKS/11 DME Fix turn right (IAS MAX 210 KT, Bank angle 15°) to track 134°, intercept and follow RDL 089 SKP to join AWY W58 and proceed to KOROS. Arrange to cross FL100 of altitude or above at RDL 050 SKS/ 14 DME Fix (or RDL 089 SKP/ 52,3 DME or in coordinates WGS-84: 39° 06' 42.02 "N, 024° 44' 09.57"E).

**KOROS 1J**

"After take off turn right remaining in visual contact with terrain until intercepting RDL 336 SKS. Then climb on RDL 336 SKS. At RDL 336 SKS/ 10 DME Fix turn left (IAS MAX 210 KT, Bank angle 15°) and proceed to SKS VOR/DME. After SKS VOR/DME intercept and follow RDL 112 SKS. At RDL 112 SKS / 10 DME Fix turn left (IAS MAX 230 KT, Bank angle 15°) to track 057° to join AWY G33 and proceed to KOROS. Cross SKS VOR/DME at 6700 ft or above and RDL 112 SKS/ 10 DME Fix at 8000 ft or above."

**NEVRA 1E**

"After take off turn right remaining in visual contact with terrain until intercepting RDL 336 SKS. Then climb on RDL 336 SKS. At RDL 336 SKS/10 DME Fix turns left (IAS MAX 210 KT, Bank angle 15°) and proceed to SKS VOR/DME. After SKS VOR/DME intercept and follow RDL 112 SKS. At RDL 112 SKS/ 12 DME Fix turn right (IAS MAX 230 KT, Bank angle 15°) to track 147° to join AWY G33 and proceed to NEVRA. Cross SKS VOR/DME at 6700 ft or above and RDL 112 SKS/12 DME Fix at 8000 ft or above."