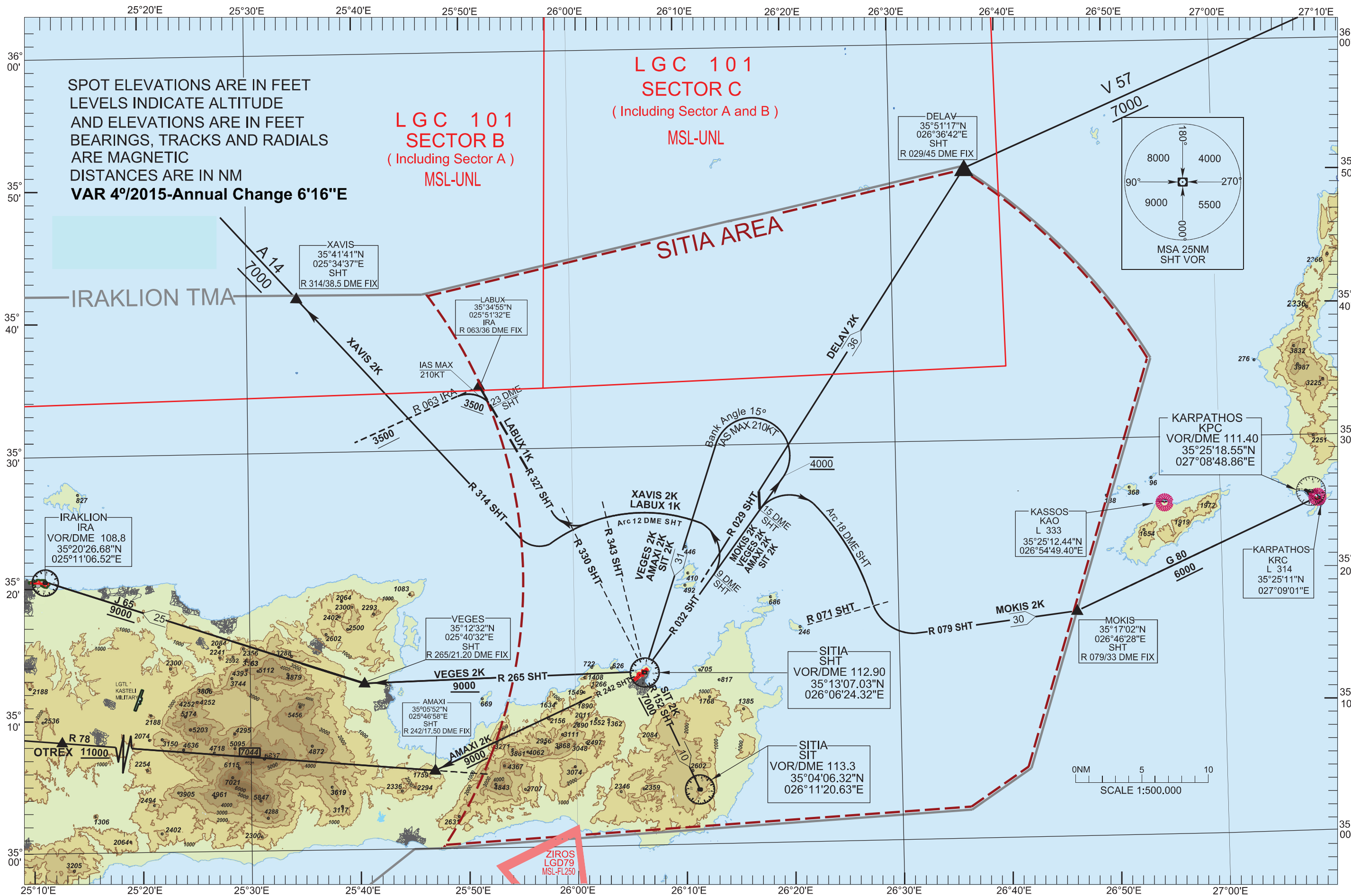


Transition Altitude 6000ft

IRAKLION APP 123.975
SITIA INFORMATION 122.600
ATHINAI ACC 125.200

ICAO DOC 8168 2nd ed. 1982

Change: "DME REQUIRED" deleted



SITIA AERODROME

SIDs RWY 05

SHT VOR/DME

XAVIS 2K, LABUX 1K, DELAV 2K, MOKIS 2K, SIT 2K, AMAXI 2K, VEGES 2K

GENERAL

When for these SIDs an altitude higher than the transition altitude is designated, then ATC unit shall specify an equivalent flight level.

XAVIS 2K

Climb on R 032 SHT. At R 032 SHT/ 09 DME Fix turn left, intercept and follow Arc12 DME SHT. Crossing R 330 SHT turn right, intercept and follow R 314 SHT to XAVIS at 7000ft or above to join AWY A14.

Note: Visual departure RWY 05 to intercept R 314 SHT to XAVIS to join AWY A14 or AWY A10.

During daytime and under VMC conditions up to 3500ft or above, aircraft expecting routing via XAVIS 2K SID may be requested if they can accept a VMC Departure.

When accepting a VMC departure and climb, aircraft will be expected to turn left as soon as practicable. After departure, maintain VMC and own terrain separation until passing ALT 3500ft to intercept and follow R 314 SHT. Thence they shall continue by executing the rest of the XAVIS 2K SID.

Turns before DER are not permitted. Standard separation will be provided between aircraft departing VMC and all other IFR aircraft. Aircraft that report unable to comply with the above shall follow the SID procedure or as otherwise will be instructed by ATC.

LABUX 1K

Climb on R 032 SHT. At R 032 SHT/ 09 DME Fix turn left, intercept and follow Arc12 DME SHT. Crossing R 343 SHT turn right, intercept and follow R 327 SHT to LABUX. Arrange to reach 3500ft or above by R 327 SHT / 23 DME Fix.

Note 1: This SID should be used for destination IRAKLION airport and is connected with STAR LABUX 2L for RWY09 and STARs LABUX1A and LABUX 1B for RWY 27 of IRAKLION airport.

Note 2: Visual departure RWY 05 to intercept R 327 SHT to LABUX.

During daytime and under VMC conditions up to 3500ft or above, aircraft expecting routing via LABUX 1K SID may be requested if they can accept a VMC Departure.

When accepting a VMC departure and climb, aircraft will be expected to turn left as soon as practicable. After departure, maintain VMC and own terrain separation until passing ALT 3500ft to intercept and follow R 327 SHT. Thence they shall continue by executing the rest of the LABUX 1K SID.

Turns before DER are not permitted. Standard separation will be provided between aircraft departing VMC and all other IFR aircraft. Aircraft that report unable to comply with the above shall follow the SID procedure or as otherwise will be instructed by ATC.

DELAV 2K

Climb on R 032 SHT. At R 032 SHT/ 09 DME Fix turn left intercept and follow R 029 SHT to DELAV at 7000ft or above to join AWY V57.

MOKIS 2K

Climb on R 032 SHT. At R 032 SHT/15 DME Fix turn right , intercept and follow ARC18 DME SHT. Crossing R 071 SHT turn left , intercept and follow R 079 SHT to MOKIS at 6000ft or above to join AWY G80.

SIT 2K

Climb on R 032 SHT to 4000ft , turn left, and proceed to SHT VOR/DME at 7000ft or above, then turn left intercept and follow R 152 SHT to SIT VOR/DME to join AWY B12 or AWY L612 or AWY M978 or AWY R78 or AWY G80 or AWY J65.

AMAXI 2K

Climb on R 032 SHT to 4000ft , turn left , and proceed to SHT VOR/DME at 9000ft or above, then turn right intercept and follow R 242 SHT to AMAXI at 11000ft or above to join AWY R78.

VEGES 2K

Climb on R 032 SHT to 4000ft , turn left , and proceed to SHT VOR/DME at 9000ft or above, then turn right intercept and follow R 265 SHT to VEGES to join AWY J65 to IRA.