

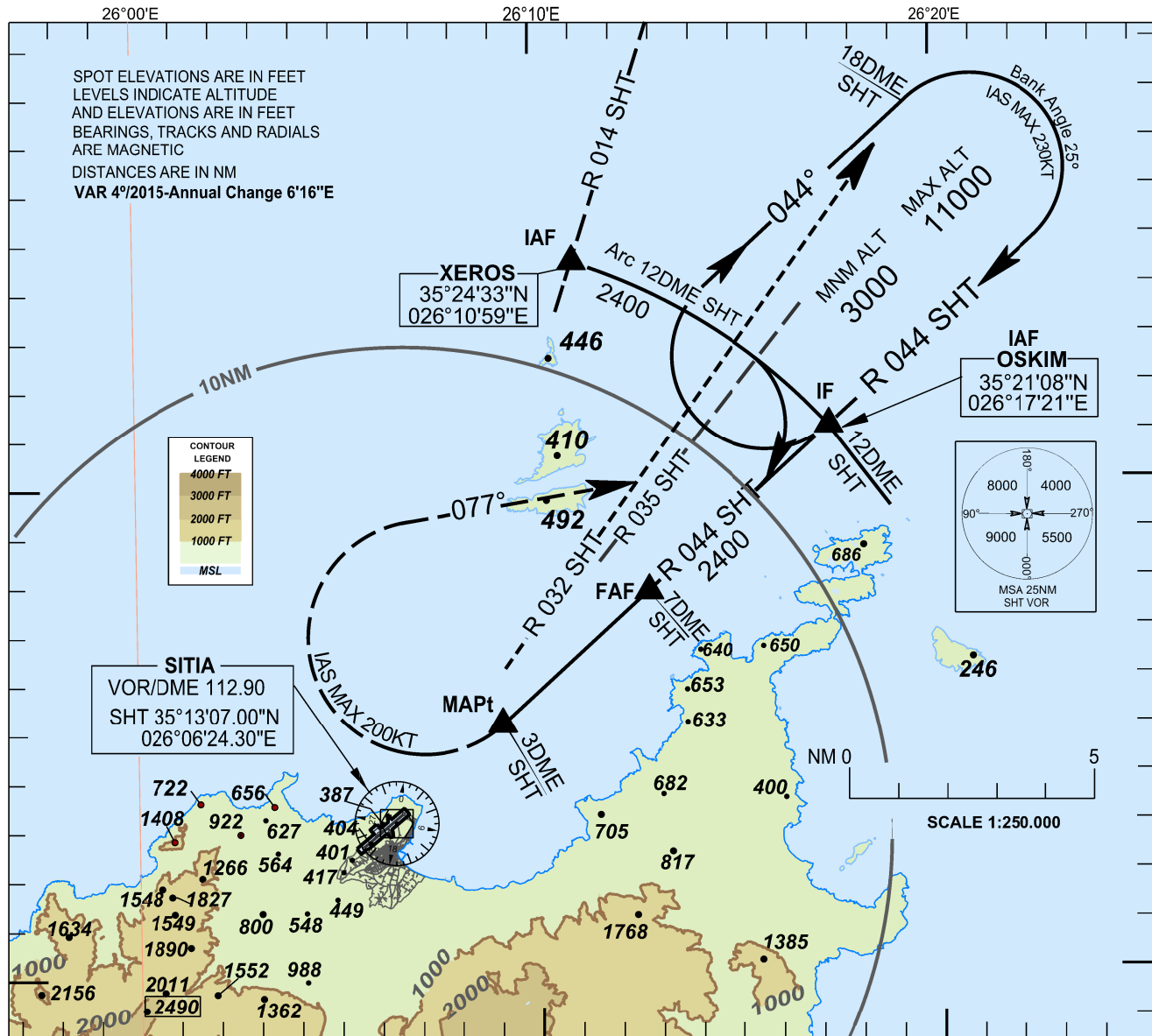
INSTRUMENT APPROACH CHART - ICAO

AERODROME ELEV. 376.4ft
HEIGHTS RELATED TO THR RWY 23 - ELEV. 315.56ft

IRAKLION APP 123.975
SITIA INFORMATION 122.600

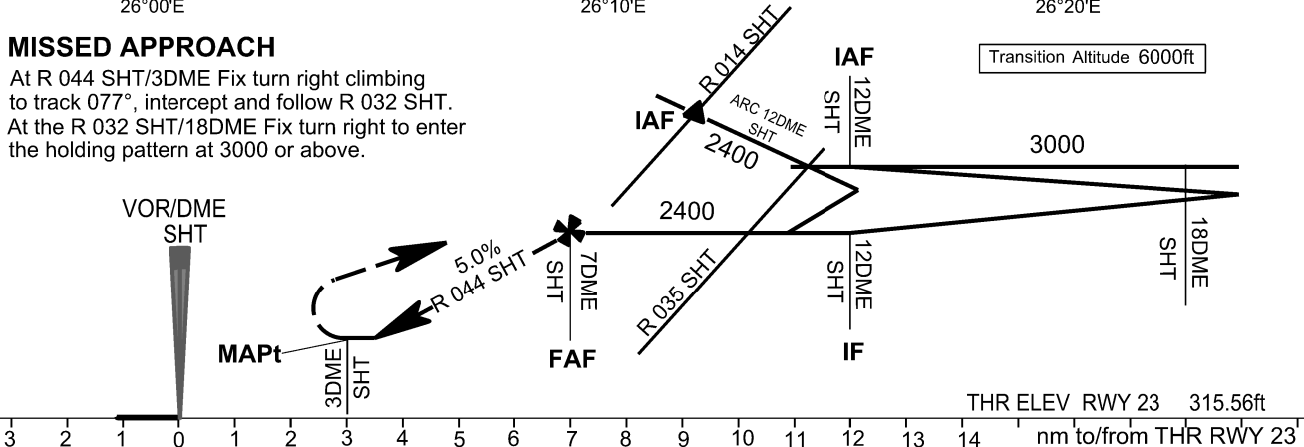
SITIA/VITSENTZOS KORNAROS
VOR/DME
RWY 23

ICAO DOC 8168 2nd ed. 1982
Change: "DME REQUIRED" deleted

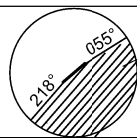


MISSED APPROACH

At R 044 SHT/3DME Fix turn right climbing to track 077°, intercept and follow R 032 SHT.
At the R 032 SHT/18DME Fix turn right to enter the holding pattern at 3000 or above.



| OCA(H) | A | B | C | D |
|----------------------------|------------|-------------|-------------|-------------|
| Straight-in Approach | 1300/(984) | 1300/(984) | 1300/(984) | 1300/(984) |
| Circling North West of RWY | 1300/(924) | 1400/(1024) | 2400/(2024) | 2600/(2224) |



no circling in this area
circling only during daytime
See back Note 4

MAX IAS VISUAL MANOEUVRING
CAT C: 160KT
CAT D: 175KT

SITIA AERODROME VITSENTZOS KORNAROS

RWY 23 – VOR/DME

Note 1: Coordinates of fixes in WGS-84 :

FAF: (R 044 SHT / 7 DME. Fix); 35° 17' 47.90" N, 026° 12' 46.93"E.
MAPt: (R 044 SHT / 3 DME. Fix); 35° 15' 07.42" N, 026° 09' 08.20"E.

Secondary Holding Fix: (R 032 SHT / 18 DME. Fix); 35° 27' 43" N, 026° 19' 22"E

Note 2: Coordinates of THR RWY 23 in WGS-84 :

35° 13' 19.52" N, 026° 06' 36.08"E.

Note 3: Table showing speed and times from FAF to MAPt.

| G/S | NM/h | 100 | 135 | 140 | 145 | 150 | 155 | 160 | 165 | 170 | 175 | 180 | 185 |
|-------------------|-------|------|------|------|------|------|------|------|------|------|------|------|------|
| FAF – MAPt 4NM | Min:s | 2:24 | 1:47 | 1:43 | 1:39 | 1:36 | 1:33 | 1:30 | 1:27 | 1:25 | 1:22 | 1:20 | 1:18 |

Note 4: Caution in the following obstacles in Circling Area.

A. Obstacles in Circling CAT A Area.

| <u>Obstacle type</u> <u>Elevation</u> | <u>Coordinates in WGS-84</u> | <u>Remarks</u> |
|--|-------------------------------------|--|
| Terrain 122m/401ft | 35° 12' 22.63" N, 026° 05' 17.80" E | Penetrates the Approach Surface of RWY 05. |
| Terrain 127m/417ft | 35° 12' 08.04" N, 026° 05' 02.78" E | Penetrates the Approach Surface of RWY 05. |
| Terrain 167m/548ft | 35° 11' 17.68" N, 026° 04' 08.75" E | Penetrates the Inner Horizontal Surface. |
| Terrain 172m/564ft | 35° 12' 31.59" N, 026° 03' 27.30" E | Penetrates the Inner Horizontal Surface. |

B. Obstacles in Circling CAT B Area.

All the above obstacles plus the following.

| <u>Obstacle type</u> <u>Elevation</u> | <u>Coordinates in WGS-84</u> | <u>Remarks</u> |
|--|-------------------------------------|--|
| Terrain 191m/627ft | 35° 13' 28.51" N, 026° 03' 22.64" E | Penetrates the Inner Horizontal Surface. |
| Terrain 269m/882ft | 35° 13' 01.47" N, 026° 02' 26.97" E | Penetrates the Conical Surface. |
| Terrain 281m/922ft | 35° 12' 56.74" N, 026° 02' 22.69" E | Penetrates the Conical Surface. |
| Terrain 244m/800ft | 35° 11' 18.42" N, 026° 03' 03.43" E | Penetrates the Approach Surface of RWY 05 and the Conical Surface. |

C. Obstacles in Circling CAT C Area.

All the above obstacles plus the following.

| <u>Obstacle type</u> <u>Elevation</u> | <u>Coordinates in WGS-84</u> | <u>Remarks</u> |
|--|-------------------------------------|--|
| Terrain 386m/1266ft | 35° 12' 02.37" N, 026° 01' 34.20" E | Penetrates the Conical Surface. |
| Terrain 291m/955ft | 35° 10' 23.27" N, 026° 02' 03.95" E | Penetrates the Horizontal Surface of 150m above THR 05. |
| Terrain 400m/1312ft | 35° 10' 34.26" N, 026° 01' 20.64" E | Penetrates the Approach Surface of RWY 05 and the Horizontal Surface of 150m above THR 05. |
| Terrain 452m/1483ft | 35° 10' 38.23" N, 026° 01' 15.54" E | Penetrates the Horizontal Surface of 150m above THR 05. |
| Terrain 557m/1827ft | 35° 11' 20.20" N, 026° 00' 52.48" E | Penetrates the Horizontal Surface of 150m above THR 05. |
| Terrain 444m/1456ft | 35° 11' 43.13" N, 026° 01' 18.08" E | Penetrates the Horizontal Surface of 150m above THR 05. |
| Terrain 472m/1548ft | 35° 11' 40.33" N, 026° 00' 48.90" E | Penetrates the Horizontal Surface of 150m above THR 05. |
| Terrain 429m/1408ft | 35° 12' 47.77" N, 026° 00' 53.64" E | Penetrates the Horizontal Surface of 150m above THR 05. |
| Terrain 452m/1483ft | 35° 11' 48.37" N, 026° 00' 33.24" E | Penetrates the Horizontal Surface of 150m above THR 05. |

D. Obstacles in Circling CAT D Area.

All the above obstacles plus the following.

| <u>Obstacle type</u> <u>Elevation</u> | <u>Coordinates in WGS-84</u> | <u>Remarks</u> |
|--|-------------------------------------|--|
| Terrain 613m/2011ft | 35° 09' 43.47" N, 026° 00' 36.60" E | Penetrates the Approach Surface of RWY 05 and the Horizontal Surface of 150m above THR 05. |
| Terrain 530m/1738ft | 35° 10' 13.04" N, 026° 00' 38.06" E | Penetrates the Approach Surface of RWY 05 and the Horizontal Surface of 150m above THR 05. |
| Terrain 614m/2014ft (3 Antennas) | 35° 10' 57.29" N, 026° 00' 30.05" E | Penetrates the Horizontal Surface of 150m above THR 05. |