

STANDARD DEPARTURE CHART - INSTRUMENT (SID) - ICAO

TRANSITION ALTITUDE 7000ft

ATIS 127.050 TWR 129.850
APP 124.100
ACC 133.325

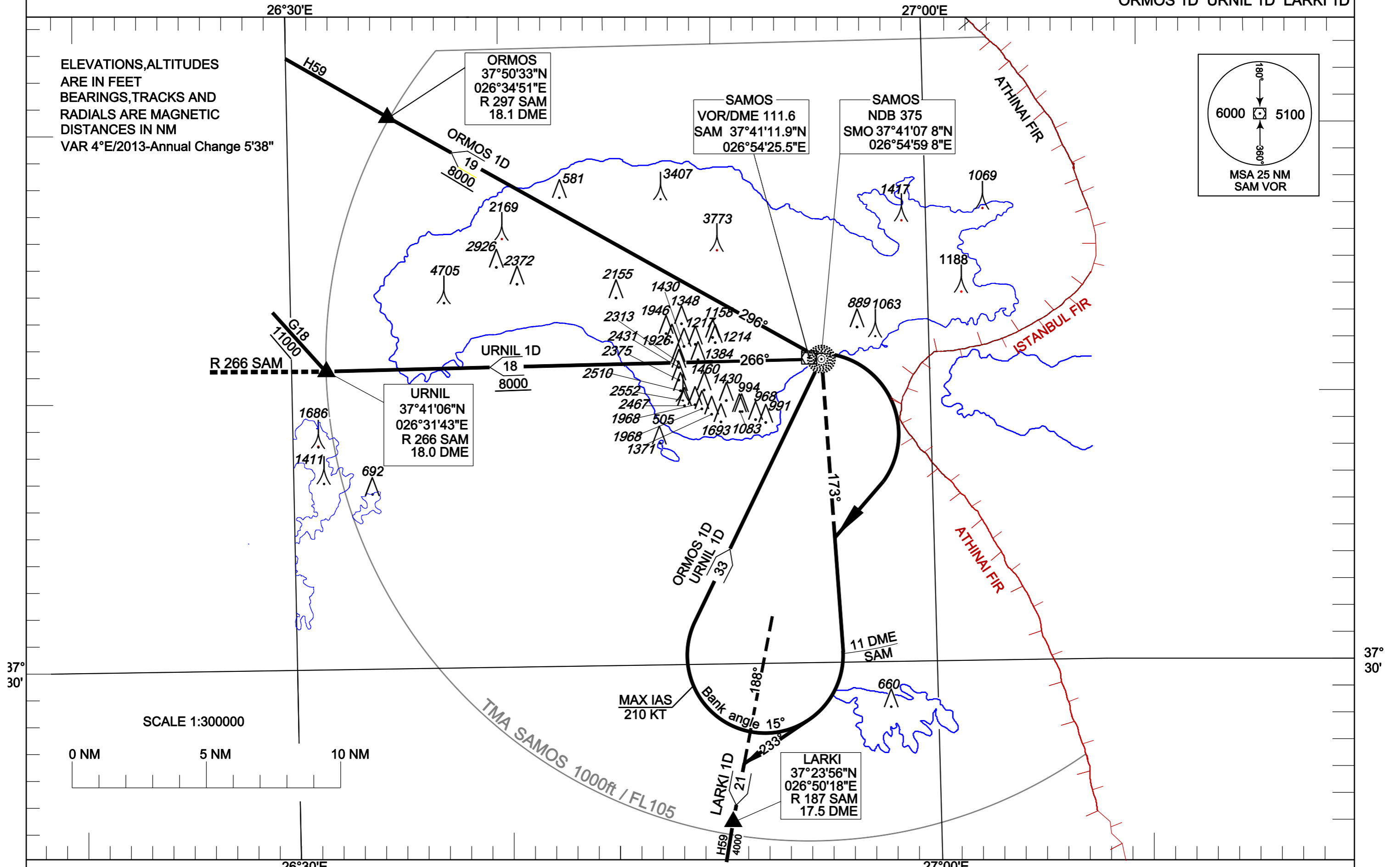
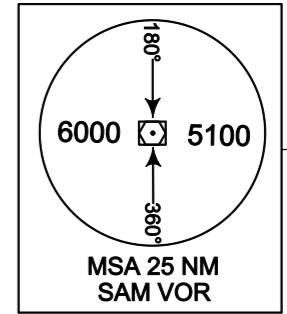
SAMOS/ARISTARCHOS OF SAMOS

NDB

RWY 09

ORMOS 1D URNIL 1D LARKI 1D

ELEVATIONS,ALTITUDES
ARE IN FEET
BEARINGS,TRACKS AND
RADIALS ARE MAGNETIC
DISTANCES IN NM
VAR 4°E/2013-Annual Change 5'38"



SCALE 1:300000

0 NM 5 NM 10 NM

SAMOS / ARISTARCHOS OF SAMOS

SMO NDB – SIDs RWY 09

SIDs : LARKI 1D, URNIL 1D, ORMOS 1D

GENERAL:

1. When for these SIDs an altitude higher than the transition altitude is designated, then ATC unit shall specify an equivalent flight level.
2. A minimum visibility of 5 km and a visual initial climb with right turn to intercept bearing 174 deg from SMO NDB are required.

LARKI 1D: A minimum PDG (Procedure Design Gradient) of 5,0% (304 FT/NM) up to the minimum en-route altitude of 4000ft of altitude is required. Thence :

After take off turn right as soon as practicable remaining in visual contact with terrain until intercepting bearing 173° from SMO NDB. Then climb on bearing 173° from SMO NDB. At 11 DME/SAM turn right to track 233°, intercept and follow bearing 189 deg from SMO NDB and proceed to LARKI to join AWY H59.

URNIL 1D: A minimum PDG (Procedure Design Gradient) of 5,0% (304 FT/NM) up to the minimum en-route altitude of 8000ft of altitude is required. Thence :

After take off turn right as soon as practicable remaining in visual contact with terrain until intercepting bearing 173° from SMO NDB. Then climb on bearing 173° from SMO NDB. At 11 DME/SAM turn right (MAX IAS 210 KT, Bank Angle 15°) and proceed to SMO NDB at 8000ft or above, then turn left, intercept and follow bearing 266° from SMO NDB and proceed to URNIL at 11000ft or above to join AWY G18.”

ORMOS 1D: A minimum PDG (Procedure Design Gradient) of 5,0% (304 FT/NM) up to the minimum en-route altitude of 8000ft of altitude is required. Thence :

After take off turn right as soon as practicable remaining in visual contact with terrain until intercepting bearing 173° from SMO NDB. Then climb on bearing 173° from SMO NDB. At 11 DME/SAM turn right (MAX IAS 210 KT, Bank Angle 15°) and proceed to SMO NDB at 8000ft or above, then turn left, intercept and follow bearing 296° from SMO NDB and proceed to ORMOS to join AWY G18.”