

STANDARD DEPARTURE  
CHART -  
INSTRUMENT (SID) - ICAO

SAMOS/ARISTARCHOS OF SAMOS

RWY 09/27

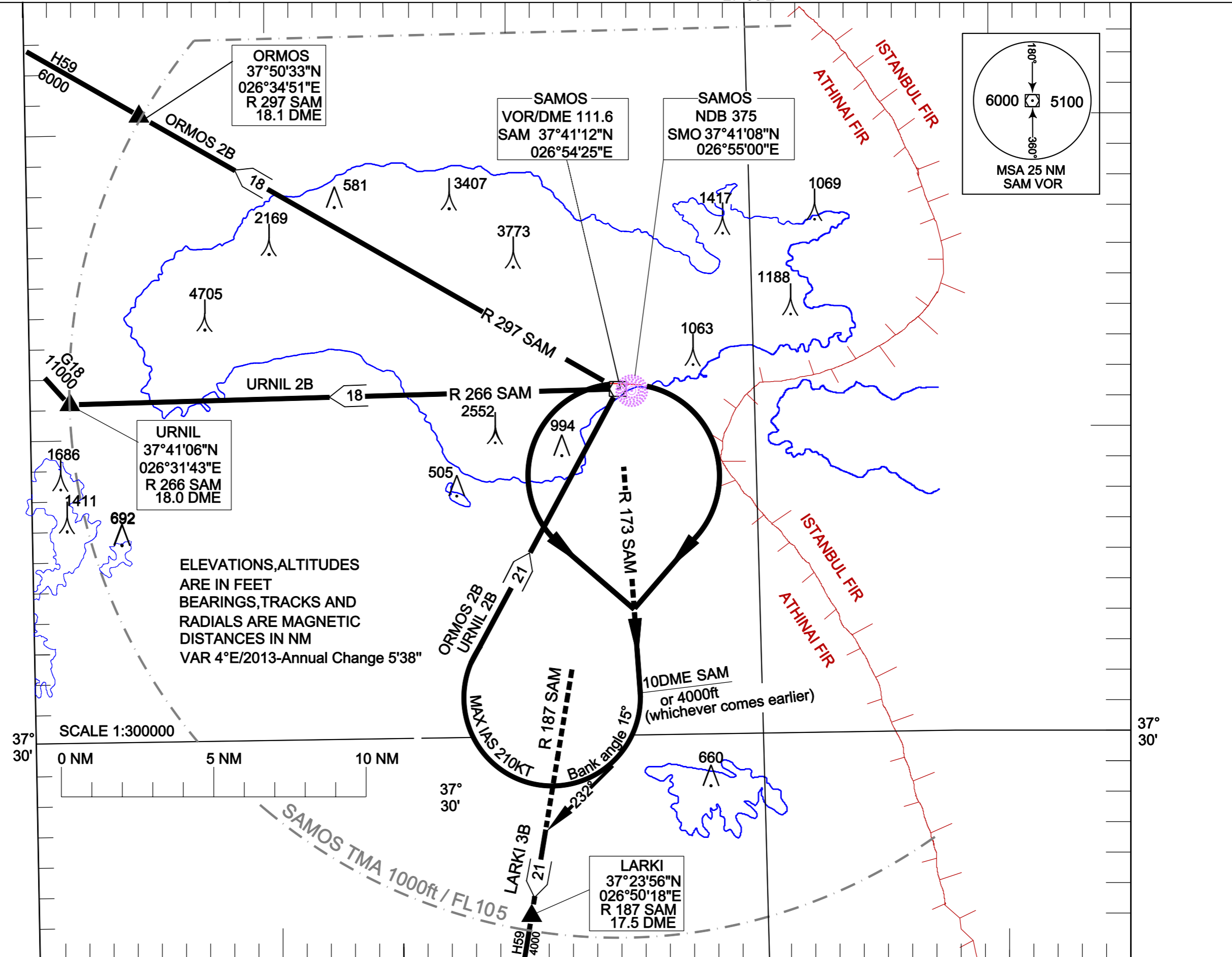
TRANSITION ALTITUDE 7000ft

ATIS 127.050 TWR 129.850  
APP 124.100  
ACC 133.325

ORMOS 2B URNIL 2B LARKI 3B

26°30'E

27°00'E



**SAMOS/ ARISTARCHOS OF SAMOS  
SAM VOR/DME SIDs - RWY 09/27****GENERAL INSTRUCTIONS**

PDG: 5.0% (304 ft/nm) up to the minimum en-route altitude 6000ft (due to obstacles and then for ATC purposes). When an altitude higher than the transition altitude is designated, then an equivalent flight level shall be specified by ATC unit.

TAKE OFF either RWY 09 or RWY 27

Visual initial climb with right turn (RWY 09) or left turn (RWY 27) to intercept R 173 SAM VOR/DME, thence:

**LARKI 3B:** Climb on R 173 SAM. At R 173 SAM/10 DME FIX or 4000ft, whichever comes earlier, turn right to track 232<sup>0</sup>, intercept and follow R 187 SAM to LARKI 4000ft or above. (See note 1)

**URNIL 2B:** Climb on R173 SAM. At R 173 SAM/10 DME FIX or 4000ft, whichever comes earlier, turn right (MAX IAS 210KT, Bank angle15<sup>0</sup>) to SAM VOR/DME 6000ft or above, turn left intercept and follow R266 SAM to URNIL 11000ft or above. (See note 2 & 3)

**ORMOS 2B:** Climb on R 173 SAM. At R 173 SAM/10 DME FIX or 4000ft, whichever comes earlier, turn right (MAX IAS 210KT, Bank angle15<sup>0</sup>) to SAM VOR/DME 6000ft or above, turn left intercept and follow R 297 SAM to ORMOS 6000ft or above. (See note 2 & 3)

Note 1: "Visual Departure RWY 09 to LARKI :

By day, when the visibility is 10 km and ceiling 4000ft or greater, aircraft expecting routing via LARKI 3B may be requested if they can accept a visual departure.

When accepting a visual departure and climb, aircraft will be expected to turn right as soon as practicable after departure, maintain VMC and own terrain separation until passing ALT 3500ft and climb as been instructed by ATC unit direct to LARKI.

Standard separation will be provided between aircraft departing VMC and all other IFR aircraft.

Aircraft that report unable to comply with the above, shall follow the full SID procedures, or as instructed by ATC."

Note 2: "Visual Departure RWY 09 with RIGHT TURN to URNIL or ORMOS :

By day, when the visibility is 10 km and ceiling 6000ft or greater, aircraft expecting routing via URNIL 2B or ORMOS 2B may be requested if they can accept a visual departure with RIGHT TURN.

When accepting a visual departure with RIGHT TURN and climb, aircraft will be expected to turn right as soon as practicable after departure, maintain VMC and own terrain separation until passing ALT 6000ft and climb as been instructed by ATC unit direct to URNIL (FL110 or above) or ORMOS. (Alt. 6000ft or above.)

Caution spot heights: bearing SAM/VOR 069 DEG / 2.6 NM at 889 ft AMSL.,

Bearing SAM/VOR 217 DEG/2.9 NM at 994ft AMSL.,

Bearing SAM/VOR 244 DEG/4.4 NM at 2552ft AMSL.,

Bearing SAM/VOR 316 DEG/5.19 NM at 3773ft AMSL.,

Bearing SAM/VOR 276 DEG/13.82 NM at 4705ft AMSL.,

Standard separation will be provided between aircraft departing VMC and all other IFR aircraft.

Aircraft that report unable to comply with the above, shall follow the full SID procedures, or as instructed by ATC."

Note 3: "Visual Departure RWY 09 with LEFT TURN to URNIL or ORMOS :

By day, when the visibility is 10 km and ceiling 6000ft or greater, aircraft expecting routing via URNIL 2B or ORMOS 2B may be requested if they can accept a visual departure with LEFT TURN.

When accepting a visual departure with LEFT TURN and climb, aircraft will be expected to turn left as soon as practicable after departure, maintain VMC and own terrain separation until passing ALT 6000ft and climb as been instructed by ATC unit direct to URNIL (FL110 or above) or ORMOS. (Alt. 6000ft or above.)

Caution spot heights: bearing SAM/VOR 069 DEG / 2.6 NM at 889ft AMSL.,

Bearing SAM/VOR 064 DEG/6.17 NM at 1188ft AMSL.,

Bearing SAM/VOR 046 DEG/8.54 NM at 1069ft AMSL.,

Bearing SAM/VOR 031 DEG/6.18 NM at 1417ft AMSL.,

Bearing SAM/VOR 316 DEG/5.19 NM at 3773ft AMSL.,

Bearing SAM/VOR 314 DEG/8.11 NM at 3407ft AMSL.,

Bearing SAM/VOR 276 DEG/13.82 NM at 4705ft AMSL.,

Standard separation will be provided between aircraft departing VMC and all other IFR aircraft.

Aircraft that report unable to comply with the above, shall follow the full SID procedures, or as instructed by ATC."