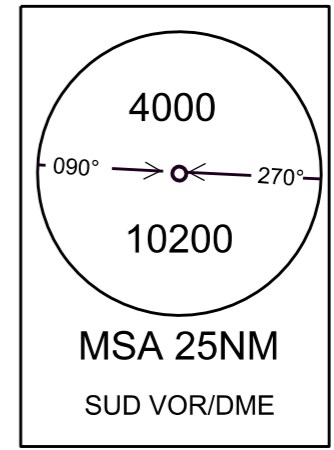
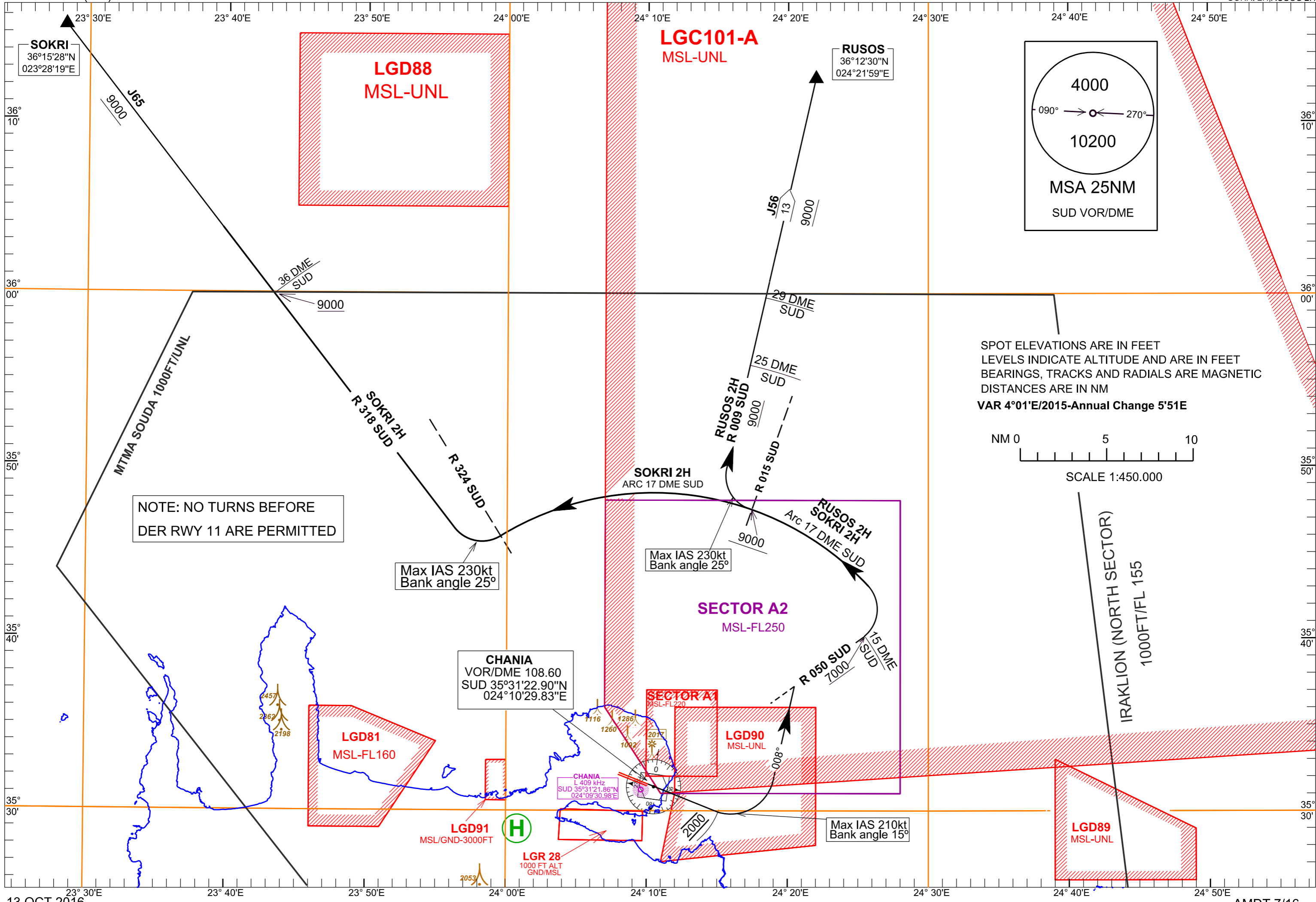


STANDARD DEPARTURE CHART INSTRUMENT(SID)-ICAO

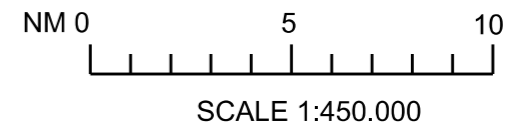
TRANSITION ALTITUDE 11000 ft

APP 118.125 362.300 MHz  
TWR 118.125 257.800 MHz ATIS 130.175

CHANIA/I.DASKALOGIANNIS  
SUD VOR/DME RWY 11  
SOKRI 2H.RUSOS 2H



SPOT ELEVATIONS ARE IN FEET  
LEVELS INDICATE ALTITUDE AND ARE IN FEET  
BEARINGS, TRACKS AND RADIALS ARE MAGNETIC  
DISTANCES ARE IN NM  
VAR 4°01'E/2015-Annual Change 5'51E



NOTE: NO TURNS BEFORE  
DER RWY 11 ARE PERMITTED

CHANIA/IOANNIS DASKALOGIANNIS AIRPORT

SIDs RWY 11

SUD VOR/DME SIDs RWY 11

GENERAL

1. When for these SIDs an altitude higher than the transition altitude is designated, then ATC unit shall specify an equivalent flight level.
2. No turns before DER RWY 11 are permitted.

DESIGNATOR	DESCRIPTION	MAX IAS /BANK ANGLE	MINIMUM CLIMB GRADIENT (PDG).	ALTITUDES
<b>SOKRI 2H</b>	Climb straight ahead. At 2000 ft turn left to track 008°, intercept and follow R 050 SUD. At R 050 SUD / 15 DME fix turn left intercept and follow ARC 17 DME SUD. Crossing R 324 SUD turn right intercept and follow R 318 SUD and join AWY J65 to SOKRI.	210KT until turn at 2000ft completed. 15° Bank Angle.	6.0% (365 ft/nm) up to 9000 ft for ATC purposes.	Cross R 050 SUD/ 15 DME fix at 7000ft or above. Cross R 015 SUD at 9000ft or above.
<b>RUSOS 2H</b>	Climb straight ahead. At 2000 ft turn left to track 008°, intercept and follow R 050 SUD. At R 050 SUD / 15 DME fix turn left intercept and follow ARC 17 DME SUD. Crossing R 015 SUD turn right intercept and follow R 009 SUD and join AWY J56 to RUSOS.	210KT until turn at 2000ft completed. 15° Bank Angle.	6.0% (365 ft/nm) up to 9000 ft for ATC purposes.	Cross R 050 SUD/ 15 DME fix at 7000ft or above. Cross R 015 SUD at 9000ft or above.

**NOTE : VISUAL DEPARTURE RWY 11 to intercept R 318 SUD to join AWY J65 to SOKRI.**

During day time,when visibility is 10 KM and ceiling 3100ft or above, aircraft expecting routing via SOKRI 2H SID may be requested if they can accept a Visual Departure with left turn.When accepting a Visual Departure with left turn, aircraft will expect to turn left as soon as practicable after departure, maintain VMC and own terrain separation until passing 3100 ft altitude to intercept R318 SUD. Thence they shall follow R 318 SUD to join AWY J65 to SOKRI.

**Caution spot heights:**

Bearing SUD/VOR 007°/1.22NM at 840 ft ,  
Bearing SUD/VOR 353°/1.58NM at 2017 ft,  
Bearing SUD/VOR 012°/2.14NM at 1118 ft,  
Bearing SUD/VOR 002°/2.60NM at 1387 ft.