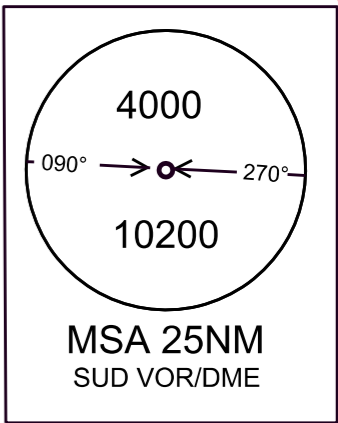
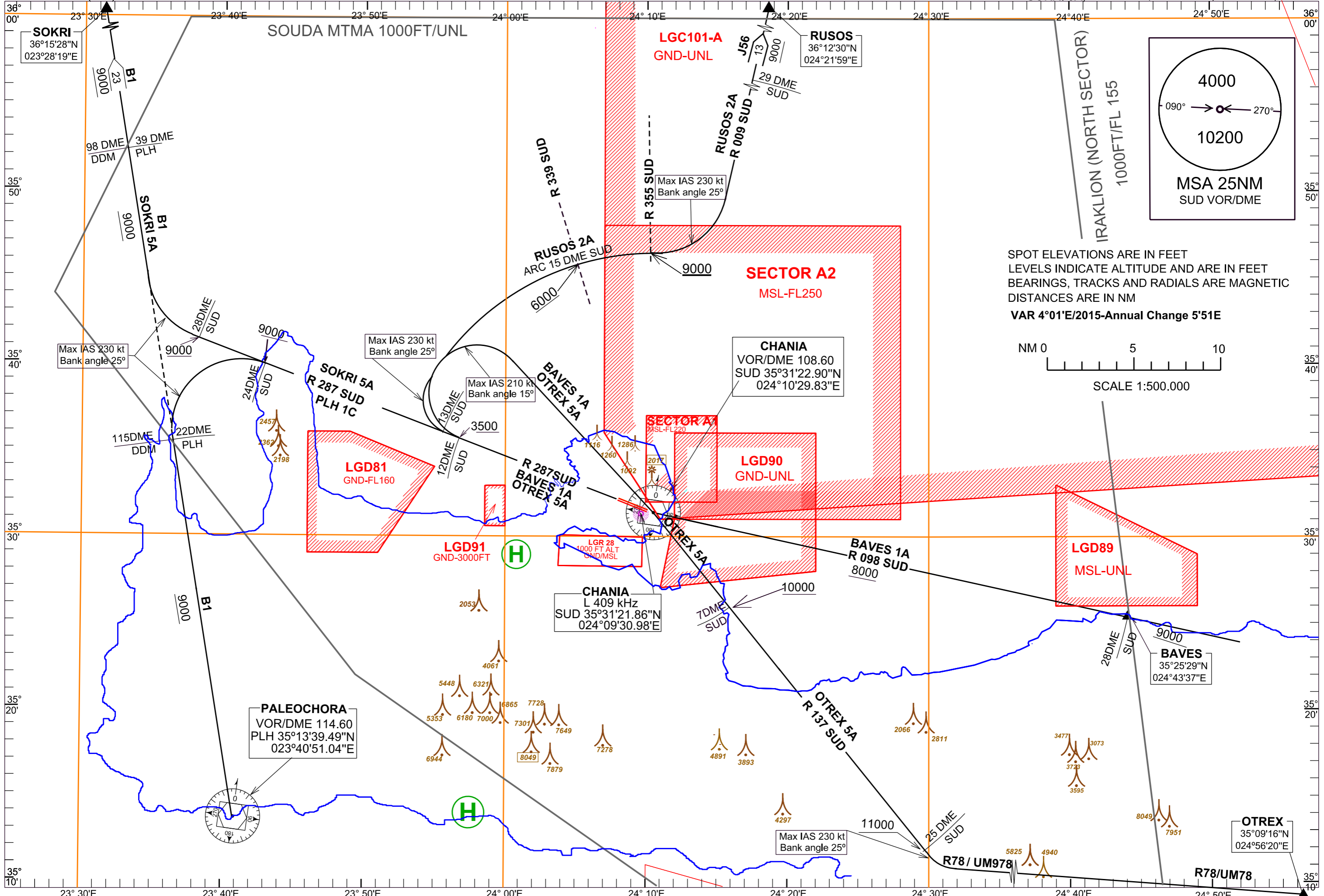


STANDARD DEPARTURE CHART  
INSTRUMENT (SID) - ICAO

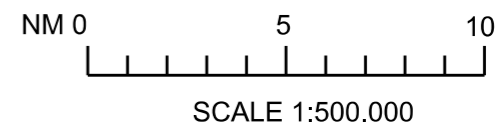
TRANSITION ALTITUDE 11000 ft

APP 118.125 362.300 MHz  
TWR 118.125 257.800 MHz  
ATIS 130.175

CHANIA / IOANNIS DASKALOYIANNIS  
SUD VOR/DME RWY 29  
SOKRI 5A, RUSOS 2A, BAVES 1A, OTREX 5A, PLH 1C



SPOT ELEVATIONS ARE IN FEET  
 LEVELS INDICATE ALTITUDE AND ARE IN FEET  
 BEARINGS, TRACKS AND RADIALS ARE MAGNETIC  
 DISTANCES ARE IN NM  
 VAR 4°01'E/2015-Annual Change 5'51E



## CHANIA/IOANNIS DASKALOGIANNIS AIRPORT

## SIDs RWY 29

## SUD VOR/DME SIDs RWY 29

## GENERAL

When for these SIDs an altitude higher than the transition altitude is designated, then ATC unit shall specify an equivalent flight level.

DESIGNATOR	DESCRIPTION	MAX IAS /BANK ANGLE	MINIMUM CLIMB GRADIENT (PDG).	ALTITUDES
SOKRI 5A	Climb on R 287 SUD. At R 287 SUD/28 DME.Fix turn right,join AWY B1 and proceed to SOKRI.	230KT until turn at R 287 SUD/28 DME.Fix completed. 25° Bank .	5.5% (335 ft/NM) up to 9000 ft for ATC purposes	Cross R 287 SUD/28 DME.Fix at 9000ft or above.
PLH 1C	Climb on R 287 SUD. At R 287 SUD/24 DME.Fix turn left,join AWY B1 and proceed to PLH.	230KT until turn at R 287 SUD/24 DME.Fix completed. 25° Bank.	5.5% (335 ft/NM) up to 9000 ft for ATC purposes	Cross R 287 SUD/24 DME.fix at 9000ft or above.
RUSOS 2A	Climb on R 287 SUD. At R 287 SUD /13DME.Fix turn right, intercept and follow ARC 15 DME SUD.Crossing R355 SUD turn left, intercept and follow R 009 SUD, join AWY J56 and proceed to RUSOS.	230KT until turn at R 287 SUD/13 DME completed. 25° Bank. 230KT until turn at the point of intersection of R 355 SUD and Arc 15 DME SUD completed. 25° Bank.	6.0% (365 ft/NM) up to 9000 ft for ATC purposes	Cross R 339 SUD at 6000ft or above. Cross R 355 SUD at 9000ft or above.
BAVES 1A	Climb on R 287 SUD. At R 287 SUD /12DME.Fix or 3500ft turn right and proceed to SUD. After SUD intercept and follow R 098 SUD to BAVES.	210KT until turn at 12 DME/SUD completed. 15° Bank.	5.3% (322 ft/NM) up to 3500ft for ATC purposes	Cross R 287 SUD/12 DME.Fix at 3500ft or above. Cross SUD at 8000ft or above. Cross R 098 SUD/28 DME.Fix at 9000ft or above.
OTREX 5A	Climb on R 287 SUD. At R 287 SUD /12DME.Fix or 3500ft turn right and proceed to SUD. After SUD intercept and follow R 137 SUD. At R 137 SUD/25 DME.Fix turn left to join Awys R78/M78 and proceed to OTREX.	210KT until turn at 12 DME/SUD completed. 15° Bank.  230KT until turn at R137 SUD/25 DME.Fix completed.	5.3% (322 ft/NM) up to 10000ft for ATC purposes	Cross R 287 SUD/12 DME.Fix at 3500ft or above. Cross R 137 SUD/7DME at 10000ft or above. Cross R 137 SUD/25 DME. Fix at 11000ft or above.

NOTE1 : VISUAL DEPARTURE RWY 29 to intercept R 009 SUD to join AWY J56 to RUSOS.

During day time, when visibility is 10 KM and ceiling 3100ft or above,aircraft expecting routing via RUSOS 2A SID may be requested if they can accept a Visual Departure with right turn. When accepting a Visual Departure with right turn aircraft will expect to turn right as soon as practicable after departure, maintain VMC and own terrain separation until passing 3100 ft to intercept R 009 SUD.

Thence they shall follow R 009 SUD to join AWY J56 to RUSOS .

Caution spot heights:.

Bearing SUD/VOR 318°/5.27NM at 1115 ft.

Bearing SUD/VOR 322°/4.20NM at 1260 ft.

Bearing SUD/VOR 326°/3NM at 1092 ft.

Bearing SUD/VOR 353°/1.58NM at 2017 ft.