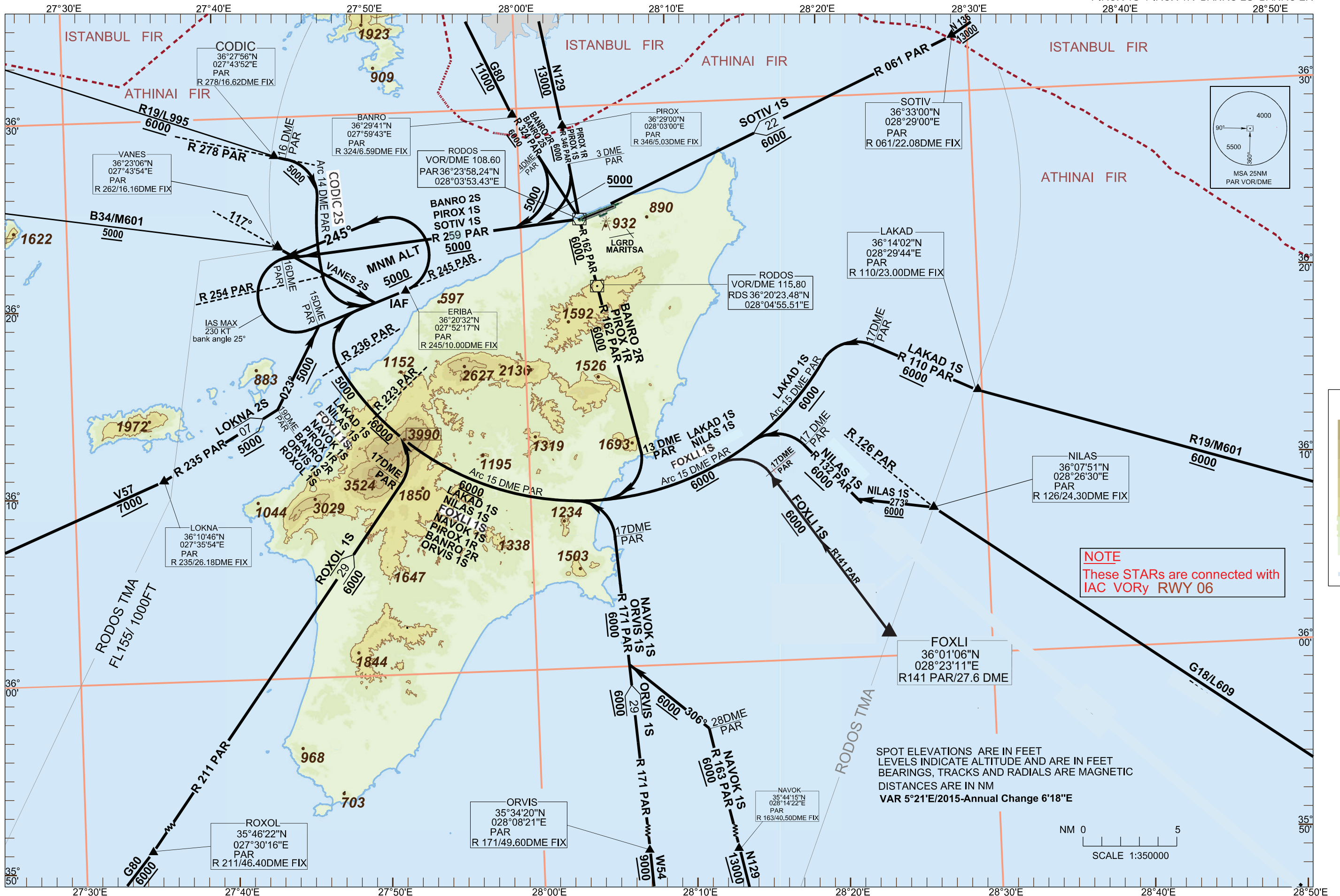


TRANSITION ALTITUDE 6000 ft

APP 127.250, 118.250  
TWR 118.200  
ATIS 126.350

CODIC 2S, VANES 2S, LOKNA 2S, ROXOL 1S, ORVIS 1S  
NAVOK 1S, FOXLI 1S, NILAS 1S, LAKAD 1S, SOTIV 1S  
PIROX 1S, PIROX 1R, BANRO 2S, BANRO 2R

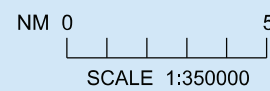


**CONTOUR LEGEND**

- 4000 FT
- 3500 FT
- 3000 FT
- 2500 FT
- 2000 FT
- 1500 FT
- 1000 FT
- 500 FT
- MSL

**NOTE**  
These STARs are connected with IAC VORy RWY 06

SPOT ELEVATIONS ARE IN FEET  
LEVELS INDICATE ALTITUDE AND ARE IN FEET  
BEARINGS, TRACKS AND RADIALS ARE MAGNETIC  
DISTANCES ARE IN NM  
VAR 5°21'E/2015-Annual Change 6'18"E



CHANGES:  
FOXLI 1S (NEW)  
IRBAX 1S (DELETED)

**RODOS / DIAGORAS AIRPORT****STARs RWY 06 PAR VOR/DME****STARs : CODIC 2S, VANES 2S, LOKNA 2S, ROXOL 1S, ORVIS 1S, NAVOK 1S, FOXLI 1S, NILAS 1S, LAKAD 1S, SOTIV 1S, BANRO 2S, BANRO 2R, PIROX 1S, PIROX 1R.****GENERAL:**

When for these STARs an altitude higher than the transition altitude is designated, then ATC unit shall specify an equivalent flight level.

**CODIC 2S:** "...After **CODIC** at 6000ft or above, intercept and follow R 278 PAR. At R 278 PAR / 16 DME. Fix turn right, intercept and follow Arc 14 DME PAR. Crossing R 254 PAR at 5000ft or above turn left, intercept and follow R 245 PAR to ERIBA (IAF) at 5000ft or above."

Total length of STAR: 13.2NM.

**VANES 2S:** "...After **VANES**, at 5000ft or above, turn right to track 117<sup>0</sup>, intercept and follow R 245 PAR to ERIBA (IAF) at 5000ft or above."

Total length of STAR: 7.8NM.

**LOKNA 2S:** "...After **LOKNA**, at 7000ft or above, turn left, intercept and follow R 235 PAR to R 235 PAR / 19 DME Fix at 5000ft or above, turn left to track 023<sup>0</sup> to R 245 PAR / 15 DME. Fix at 5000ft or above, turn right, intercept and follow R 245 PAR to ERIBA (IAF) at 5000ft or above."

Total length of STAR: 17.2NM.

**ROXOL 1S:** "...After **ROXOL** at 6000ft or above intercept and follow R 211 PAR to R 211 PAR / 17 DME Fix at 6000ft or above, turn left, intercept and follow Arc 15 DME PAR. Crossing R 236 PAR, at 5000ft or above, turn right, intercept and follow R 245 PAR to ERIBA (IAF) at 5000ft or above. Cross R 223 PAR at 6000ft or above."

Total length of STAR: 43NM.

**ORVIS 1S:** "...After **ORVIS** at 9000ft or above, intercept and follow R 171 PAR. At R 171 PAR / 17 DME Fix at 6000ft or above, turn left, intercept and follow Arc 15 DME PAR. Crossing R 236 PAR, at 5000ft or above, turn right, intercept and follow R 245 PAR to ERIBA (IAF) at 5000ft or above. Cross R 223 PAR at 6000ft or above."

Total length of STAR: 53.7NM.

**NAVOK 1S:** "...After **NAVOK** at 13000ft or above, intercept and follow R 163 PAR to R 163 PAR / 28 DME Fix at 6000ft or above, turn left to track 306<sup>0</sup>, intercept and follow R 171 PAR to R 171 PAR / 17 DME Fix at 6000ft or above, turn left, intercept and follow Arc 15 DME PAR. Crossing R 236 PAR, at 5000ft or above, turn right, intercept and follow R 245 PAR to ERIBA (IAF) at 5000ft or above. Cross R 223 PAR at 6000ft or above."

Total length of STAR: 50NM.

**NILAS 1S:** "...After **NILAS** at 6000ft or above, turn left to track 273<sup>0</sup>, intercept and follow R 132 PAR to R 132 PAR / 17 DME Fix at 6000ft or above, turn left, intercept and follow Arc 15 DME PAR. Crossing R 236 PAR, at 5000ft or above, turn right, intercept and follow R 245 PAR to ERIBA (IAF) at 5000ft or above. Cross R 223 PAR at 6000ft or above."

Total length of STAR: 43NM.

**FOXLI 1S:** "...After **FOXLI** intercept and follow R 141 PAR to R 141 PAR / 17 DME Fix at 6000ft or above, turn left, intercept and follow Arc 15 DME PAR. Crossing R 236 PAR, at 5000ft or above, turn right, intercept and follow R 245 PAR to ERIBA (IAF) at 5000ft or above. Cross R 223 PAR at 6000ft or above."

Total length of STAR: 44NM.

**LAKAD 1S:** "...After **LAKAD** at 6000ft or above intercept and follow R 110 PAR to R 110 PAR / 17 DME Fix at 6000ft or above, turn left, intercept and follow Arc 15 DME PAR. Crossing R 236 PAR, at 5000ft or above, turn right, intercept and follow R 245 PAR to ERIBA (IAF) at 5000ft or above. Cross R 223 PAR at 6000ft or above."

Total length of STAR: 46.4NM.

**SOTIV 1S:** "...After **SOTIV** at 13000ft or above, turn right, intercept and follow R 061 PAR to PAR VOR/DME at 6000ft or above, turn right, intercept and follow R 259 PAR to R 259 PAR / 16 DME Fix at 5000ft or above, turn left (230 KT IAS MAX, Bank angle 25<sup>0</sup>), intercept and follow R 245 PAR to ERIBA (IAF) at 5000ft or above."  
Total length of STAR: 50NM.

**PIROX 1S:** "...After **PIROX** at 13000ft or above, intercept and follow R 346 PAR to R 346 PAR / 3 DME Fix at 6000ft or above, turn right, intercept and follow R 259 PAR to R 259 PAR / 16 DME Fix at 5000ft or above, turn left (230 KT IAS MAX, Bank angle 25<sup>0</sup>), intercept and follow R 245 PAR to ERIBA (IAF) at 5000ft or above."  
Total length of STAR: 32.6NM.

**BANRO 2S:** "...After **BANRO** at 11000ft or above, intercept and follow R 324 PAR to R 324 PAR / 4 DME Fix at 6000ft or above, turn right, intercept and follow R 259 PAR to R 259 PAR / 16 DME Fix at 5000ft or above, turn left (230 KT IAS MAX, Bank angle 25<sup>0</sup>), intercept and follow R 245 PAR to ERIBA (IAF) at 5000ft or above."  
Total length of STAR: 33.6NM.

**PIROX 1R:** "...After **PIROX** at 13000ft or above, intercept and follow R 346 PAR to PAR VOR/DME at 6000ft or above, intercept and follow R 162 PAR to R 162 PAR / 13 DME Fix at 6000ft or above, turn right, intercept and follow Arc 15 DME PAR. Crossing R 236 PAR, at 5000ft or above, turn right, intercept and follow R 245 PAR to ERIBA (IAF) at 5000ft or above. Cross R 223 PAR at 6000ft or above."  
Total length of STAR: 45NM.

**BANRO 2R:** "...After **BANRO** at 11000ft or above, intercept and follow R 324 PAR to PAR VOR/DME at 6000ft or above intercept and follow R 162 PAR to R 162 PAR / 13 DME Fix at 6000ft or above, turn right, intercept and follow Arc 15 DME PAR. Crossing R 236 PAR, at 5000ft or above, turn right, intercept and follow R 245 PAR to ERIBA (IAF) at 5000ft or above. Cross R 223 PAR at 6000ft or above."  
Total length of STAR: 46.7NM.