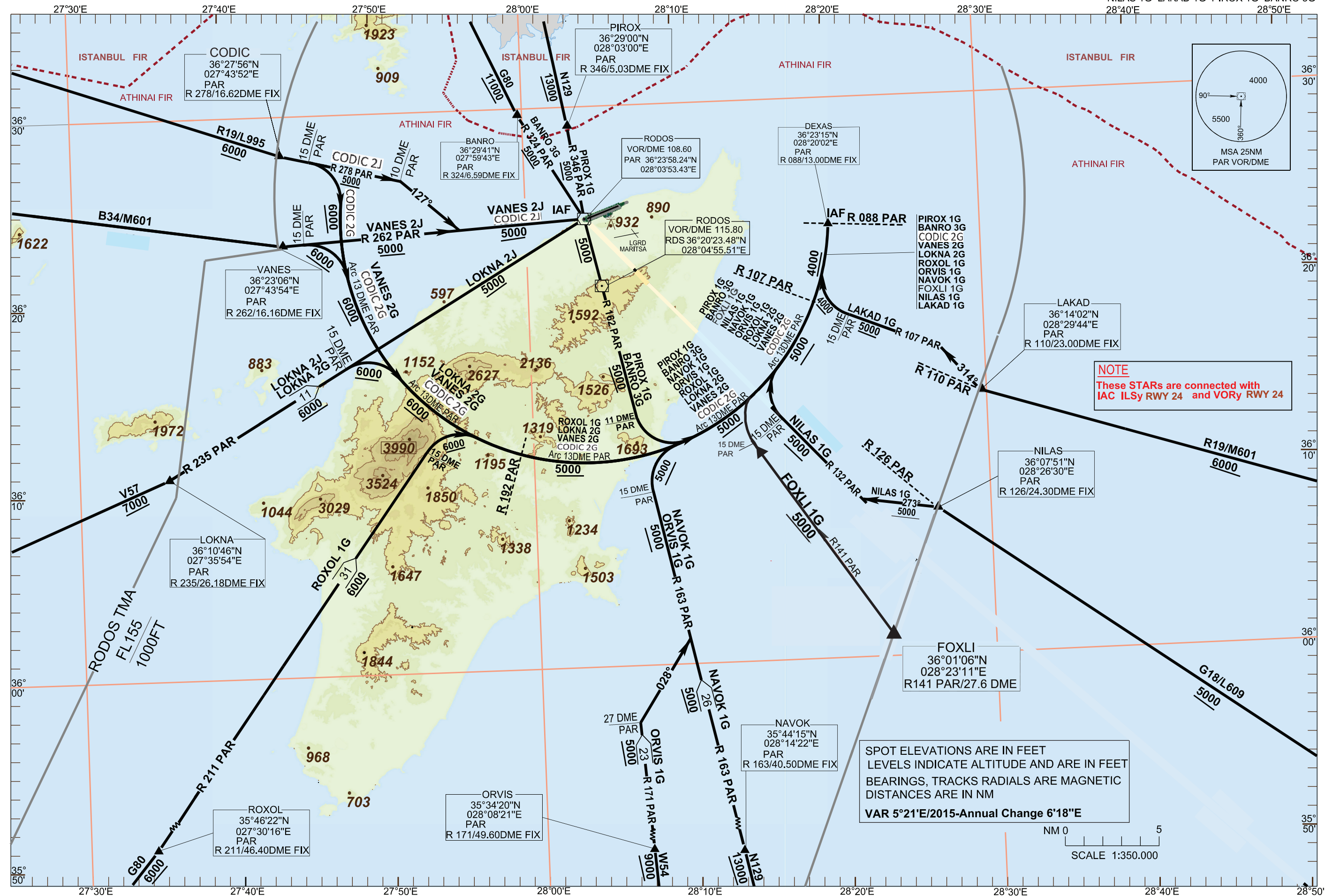


TRANSITION ALTITUDE
6000 ft

APP 127.250, 118.250
TWR 118.200
ATIS 126.350



CONTOUR LEGEND	
	4000 FT
	3500 FT
	3000 FT
	2500 FT
	2000 FT
	1500 FT
	1000 FT
	500 FT
	MSL

NOTE
These STARs are connected with
IAC ILSy RWY 24 and VORy RWY 24

SPOT ELEVATIONS ARE IN FEET
LEVELS INDICATE ALTITUDE AND ARE IN FEET
BEARINGS, TRACKS RADIALS ARE MAGNETIC
DISTANCES ARE IN NM
VAR 5°21'E/2015-Annual Change 6'18"E

NM 0 5
SCALE 1:350.000

Changes:
FOXLI 1G
(NEW)-
IRBAX 1G
(DELETED)

RODOS / DIAGORAS AIRPORT**STARs RWY 24 PAR VOR/DME (NO HOLD)****STARs : CODIC 2G, CODIC 2J, VANES 2G, VANES 2J, LOKNA 2G, LOKNA 2J, ROXOL 1G, ORVIS 1G, NAVOK 1G, FOXLI 1G, NILAS 1G, LAKAD 1G, PIROX 1G, BANRO 3G.****GENERAL:**

When for these STARs an altitude higher than the transition altitude is designated, then ATC unit shall specify an equivalent flight level.

CODIC 2G "...After CODIC at 6000ft or above intercept and follow R 278 PAR. At R 278 PAR / 15 DME. Fix at 6000ft or above turn right, intercept and follow Arc 13 DME PAR to DEXAS (IAF) at 4000ft or above. Cross R 192 PAR at 6000ft or above and R 107 PAR at 5000ft or above."

Total length of STAR: 46NM.

CODIC 2J "...After CODIC at 6000ft or above intercept and follow R 278 PAR. At R 278 PAR / 10 DME. Fix 5000ft or above turn right to track 127⁰, intercept and follow R 262 PAR to PAR VOR/DME (IAF) at 5000ft or above."

Total length of STAR: 17NM.

VANES 2G "...After VANES at 6000ft or above intercept and follow R 262 PAR. At R 262 PAR / 15 DME. Fix 6000ft or above turn right, intercept and follow Arc 13 DME PAR to DEXAS (IAF) at 4000ft or above. Cross R 192 PAR at 6000ft or above and R 107 PAR at 5000ft or above."

Total length of STAR: 42NM.

VANES 2J "...After VANES at 5000ft or above intercept and follow R 262 PAR to PAR VOR/DME (IAF) at 5000ft or above."

Total length of STAR: 16NM.

LOKNA 2G "...After LOKNA at 7000ft or above intercept and follow R 235 PAR. At R 235 PAR/15 DME. Fix at 6000ft or above turn right, intercept and follow Arc 13 DME PAR to DEXAS (IAF) at 4000ft or above. Cross R 192 PAR at 6000ft or above and R 107 PAR at 5000ft or above."

Total length of STAR: 46NM.

LOKNA 2J "...After LOKNA at 7000ft or above intercept and follow R 235 PAR to PAR VOR/DME (IAF) at 5000ft or above. Cross R 235 PAR / 15 DME. Fix at 6000ft or above."

Total length of STAR: 26NM.

ROXOL 1G "...After ROXOL at 6000ft or above intercept and follow R 211 PAR. At R 211 PAR / 15 DME. Fix 6000ft or above turn right, intercept and follow Arc 13 DME PAR to DEXAS (IAF) at 4000ft or above. Cross R 192 PAR at 6000ft or above and R 107 PAR at 5000ft or above."

Total length of STAR: 60NM.

ORVIS 1G "...After ORVIS at 9000ft or above intercept and follow R 171 PAR. At R 171 PAR / 27 DME. Fix at 5000ft or above turn right to track 028⁰, intercept and follow R 163 PAR. At R 163 PAR / 15 DME. Fix at 5000ft or above turn right, intercept and follow Arc 13 DME PAR to DEXAS (IAF) at 4000ft or above. Cross R 107 PAR at 5000ft or above."

Total length of STAR: 51NM.

NAVOK 1G "...After NAVOK at 13000ft or above intercept and follow R 163 PAR. At R 163 PAR / 15 DME. Fix 5000ft or above turn right, intercept and follow Arc 13 DME PAR to DEXAS (IAF) at 4000ft or above. Cross R 107 PAR at 5000ft or above."

Total length of STAR: 44NM.

FOXLI 1G "...After FOXLI at 5000ft or above intercept and follow R 141 PAR. At R 141 PAR / 15 DME. Fix 5000ft or above turn right, intercept and follow Arc 13 DME PAR to DEXAS (IAF) at 4000ft or above. Cross R 107 PAR at 5000ft or above."

Total length of STAR: 25NM.

NILAS 1G "...At NILAS at 5000ft or above turn left to track 273⁰, intercept and follow R 132 PAR. At R 132 PAR / 15 DME. Fix 5000ft or above turn right, intercept and follow Arc 13 DME PAR to DEXAS (IAF) at 4000ft or above. Cross R 107 PAR at 5000ft or above."

Total length of STAR: 21NM.

LAKAD 1G "...After LAKAD at 6000ft or above turn right to track 314⁰, intercept and follow R 107 PAR. At R 107 PAR / 15 DME. Fix 5000ft or above turn right, intercept and follow Arc 13 DME PAR to DEXAS (IAF) at 4000ft or above."

Total length of STAR: 14NM.

PIROX 1G "...After PIROX at 13000ft or above, intercept and follow R 346 PAR to PAR VOR / DME at 5000ft or above. After PAR intercept and follow R 162 PAR. At R 162 PAR / 11 DME. Fix 5000ft or above turn left, intercept and follow Arc 13 DME PAR to DEXAS (IAF) at 4000ft or above. Cross R 107 PAR at 5000ft or above."

Total length of STAR: 34NM.

BANRO 3G "...After BANRO at 11000ft or above intercept and follow R 324 PAR to PAR VOR/DME at 5000ft or above. After PAR intercept and follow R 162 PAR. At R 162 PAR / 11 DME. Fix 5000ft or above turn left, intercept and follow Arc 13 DME PAR to DEXAS (IAF) at 4000ft or above. Cross R 107 PAR at 5000ft or above."

Total length of STAR: 35NM.