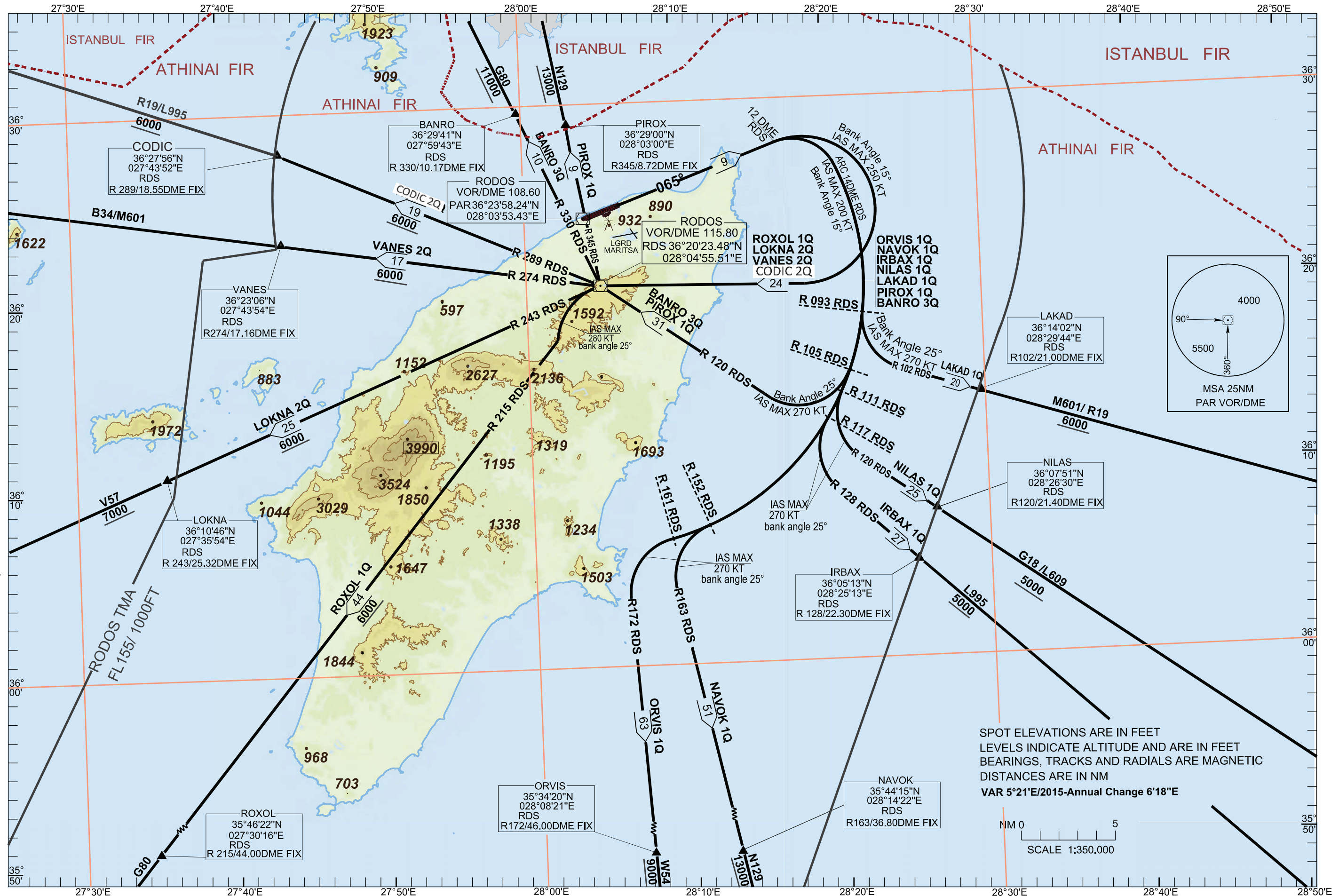


STANDARD DEPARTURE CHART - INSTRUMENT (SID) - ICAO

TRANSITION ALTITUDE 6000 ft

TWR 118.200 ATIS 126.350
APP 127.250 118.250
ACC 133.325 123.725

RODOS / DIAGORAS
RDS VOR/DME RWY 06
CODIC 2Q VANES 2Q LOKNA 2Q ROXOL 1Q ORVIS 1Q
BANRO 3Q NAVOK 1Q IRBAX 1Q NILAS 1Q LAKAD 1Q PIROX 1Q

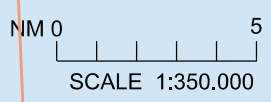


CONTOUR LEGEND

- 4000 FT
- 3500 FT
- 3000 FT
- 2500 FT
- 2000 FT
- 1500 FT
- 1000 FT
- 500 FT
- MSL

CHANGE: BANRO 3Q DESCRIPTION

SPOT ELEVATIONS ARE IN FEET
LEVELS INDICATE ALTITUDE AND ARE IN FEET
BEARINGS, TRACKS AND RADIALS ARE MAGNETIC
DISTANCES ARE IN NM
VAR 5°21'E/2015-Annual Change 6'18"E



RODOS / DIAGORAS AIRPORT

SIDs RWY 06 RDS VOR/DME

SIDs : CODIC 2Q, VANES 2Q, LOKNA 2Q, ROXOL 1Q, ORVIS 1Q, NAVOK 1Q, IRBAX 1Q, NILAS 1Q, LAKAD 1Q, BANRO 3Q, PIROX 1Q.

GENERAL:

1. When for these SIDs an altitude higher than the transition altitude is designated, then ATC unit shall specify an equivalent flight level.
2. For these SIDs a minimum PDG (Procedure Design Gradient) up to a specified altitude is required as it is described below:

CODIC 2Q, VANES 2Q, LOKNA 2Q, ROXOL 1Q, ORVIS 1Q, NAVOK 1Q, IRBAX 1Q, NILAS 1Q, LAKAD 1Q, PIROX 1Q, BANRO 3Q:

5.5% (334 ft/nm) up to 3000ft, then
3.3% (201 ft/nm) up to the minimum en-route altitude.

For SIDs: CODIC 2Q, VANES 2Q, LOKNA 2Q and ROXOL 1Q:

"Climb straight ahead on track 065°. At 12 DME/RDS, 3000ft or above, turn right (250 KT IAS MAX, Bank angle 15°) and proceed to RDS VOR/DME at 6000 ft or above. Thence ..."

CODIC 2Q: "...After RDS VOR/DME turn right, intercept and follow R 289 RDS to CODIC to join AWY R19 or L995."

VANES 2Q: "...After RDS VOR/DME turn right, intercept and follow R 274 RDS to VANES to join AWY B34 or M601."

LOKNA 2Q: "...After RDS VOR/DME turn left, intercept and follow R 243 RDS to LOKNA at 7000ft or above to join AWY V57."

ROXOL 1Q: "...After RDS VOR/DME turn left (280 KT IAS MAX, Bank angle 25°), intercept and follow R 215 RDS to ROXOL to join AWY G80."

For SIDs: IRBAX 1Q, NILAS 1Q, LAKAD 1Q, PIROX 1Q, BANRO 3Q, ORVIS 1Q and NAVOK 1Q:

"Climb straight ahead on track 065°. At 12 DME/RDS, 3000ft or above, turn right (200 KT IAS MAX, Bank angle 15°), intercept and follow ARC 14 DME RDS. Thence..."

IRBAX 1Q: "...Crossing R 117 RDS turn left (270 KT IAS MAX, Bank angle 25°), intercept and follow R 128 RDS to IRBAX at 5000ft or above to join AWY L995."

NILAS 1Q: "...Crossing R 111 RDS turn left (270 KT IAS MAX, Bank angle 25°), intercept and follow R 120 RDS to NILAS at 5000ft or above to join AWY G18 or L609."

LAKAD 1Q: "...Crossing R 093 RDS turn left (270 KT IAS MAX, Bank angle 25°), intercept and follow R 102 RDS to LAKAD at 6000ft or above to join AWY R19 or M601."

PIROX 1Q: "...Crossing R 105 RDS turn right (270 KT IAS MAX, Bank angle 25°), intercept and follow R 120 RDS to RDS VOR/DME, turn right, intercept and follow R 345 RDS to PIROX at 13000ft or above to join AWY N129."

BANRO 3Q: "...Crossing R 105 RDS turn right (270 KT IAS MAX, Bank angle 25°), intercept and follow R 120 RDS to RDS VOR/DME, turn right, intercept and follow R 330 RDS to BANRO at 11000ft or above to join AWY G80."

ORVIS 1Q: "...Crossing R 161 RDS turn left (270 KT IAS MAX, Bank angle 25°), intercept and follow R 172 RDS to ORVIS at 9000ft or above to join AWY W54."

NAVOK 1Q: "...Crossing R 152 RDS turn left (270 KT IAS MAX, Bank angle 25°), intercept and follow R 163 RDS to NAVOK at 13000ft or above to join AWY N129."