

STANDARD DEPARTURE CHART -  
INSTRUMENT (SID) - ICAO

RODOS / DIAGORAS

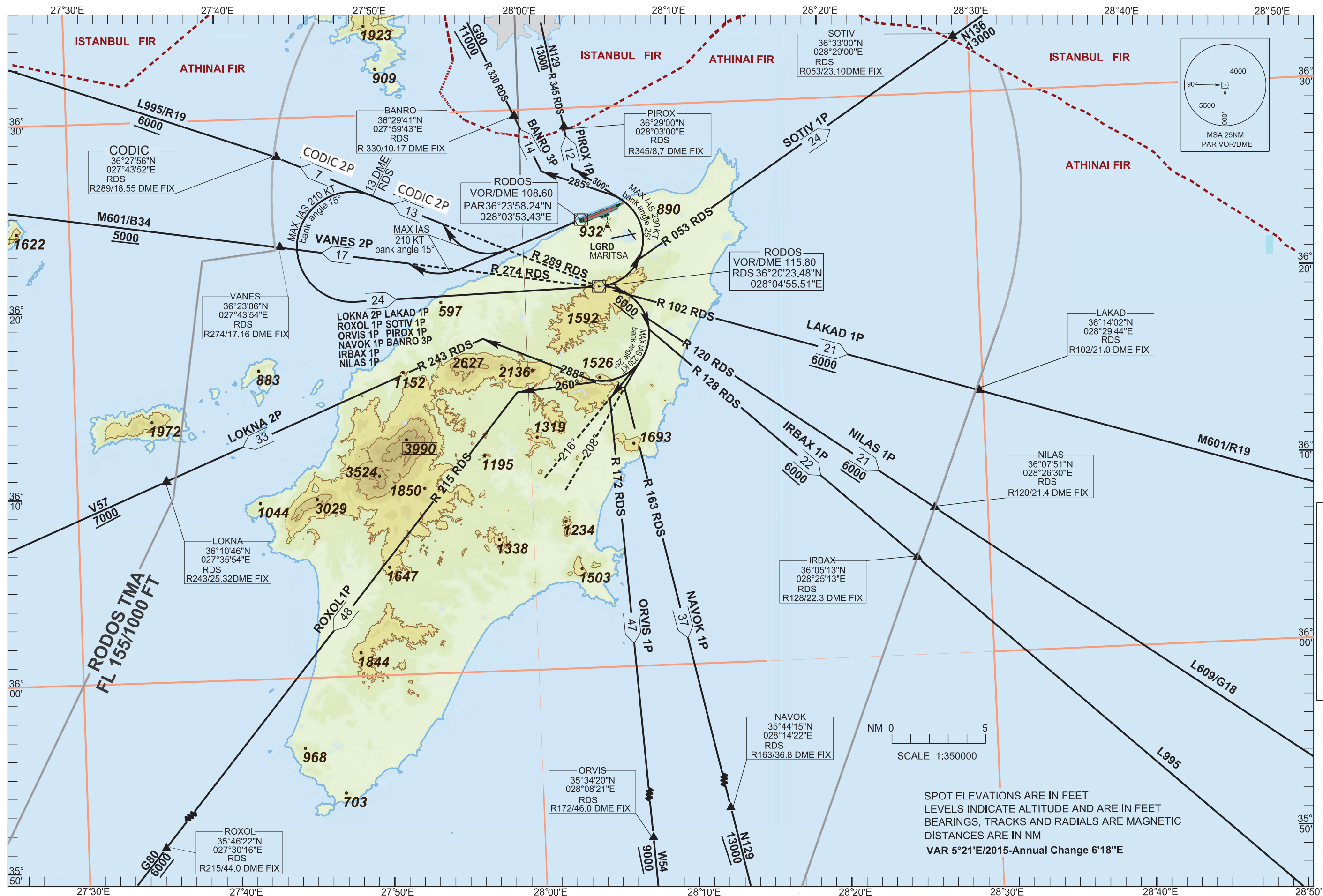
RDS VOR/DME

RWY 24

CODIC 2P VANES 2P LOKNA 2P ROXOL 1P ORVIS 1P NAVOK 1P  
IRBAX 1P NILAS 1P LAKAD 1P SOTIV 1P PIROX 1P BANRO 3P

TRANSITION ALTITUDE  
6000 ft

GROUND:121.700  
TWR 118.200 ATIS 126.350  
APP 127.250 118.250  
ACC 133.325 123.725



CHANGE:  
CODIC  
POINT

## **RODOS / DIAGORAS AIRPORT**

### **SIDs RWY 24 RDS VOR/DME**

**SIDs : CODIC 2P , VANES 2P, LOKNA 2P, ROXOL 1P, ORVIS 1P, NAVOK 1P, IRBAX 1P, NILAS 1P, LAKAD 1P, SOTIV 1P, BANRO 3P, PIROX 1P**

### **GENERAL:**

1. For these SIDs a visual climb up to 300ft is required.
2. When for these SIDs an altitude higher than the transition altitude is designated, then ATC unit shall specify an equivalent flight level.
3. For these SIDs a minimum PDG (Procedure Design Gradient) of 5.6% (340ft/nm) up to the minimum en-route altitude is required.

### **CODIC 2P:**

"Climb straight ahead. Crossing R 289 RDS or at 1500ft, whichever comes later, turn right (210 KT IAS MAX, Bank angle 15<sup>0</sup>), intercept and follow R 289 RDS to CODIC 6000ft or above to join AWY R19 or L995."

### **VANES 2P:**

"Climb straight ahead. Crossing R 274 RDS or at 2200ft, whichever comes later, turn right (210 KT IAS MAX, Bank angle 15<sup>0</sup>), intercept and follow R 274 RDS to VANES 5000ft or above to join AWY B34 or M601."

### **For SIDs: LOKNA 2P, ROXOL 1P, ORVIS 1P, NAVOK 1P, IRBAX 1P, NILAS 1P, LAKAD 1P, SOTIV 1P, PIROX 1P and BANRO 3P:**

"Climb straight ahead. Crossing R 289 RDS or at 1500ft, whichever comes later, turn right (210 KT IAS MAX, Bank angle 15<sup>0</sup>), intercept and follow R 289 RDS to R 289 RDS / 13 DME. Fix. At R 289 RDS / 13 DME Fix turn left (210 KT IAS MAX, Bank angle 15<sup>0</sup>) and proceed direct to RDS VOR/DME at 6000ft or above. Thence..."

**LOKNA 2P:** "...At RDS VOR/DME turn right (230KT IAS MAX, Bank angle 25<sup>0</sup>) to track 288<sup>0</sup>, intercept and follow R 243 RDS to LOKNA 7000ft or above to join AWY V57."

**ROXOL 1P:** "...At RDS VOR/DME turn right (230KT IAS MAX, Bank angle 25<sup>0</sup>) to track 260<sup>0</sup>, intercept and follow R 215 RDS to ROXOL 6000ft or above to join AWY G80."

**ORVIS 1P:** "...At RDS VOR/DME turn right (230KT IAS MAX, Bank angle 25<sup>0</sup>) to track 216<sup>0</sup>, intercept and follow R 172 RDS to ORVIS 9000ft or above to join AWY W54."

**NAVOK 1P:** "...At RDS VOR/DME turn right (230KT IAS MAX, Bank angle 25<sup>0</sup>), to track 208<sup>0</sup>, intercept and follow R 163 RDS to NAVOK 13000ft or above to join AWY N129."

**IRBAX 1P:** "...At RDS VOR/DME turn right, intercept and follow R 128 RDS to IRBAX to join AWY L995."

**NILAS 1P:** "...At RDS VOR/DME turn right, intercept and follow R 120 RDS to NILAS to join AWY L609 or G18."

**LAKAD 1P:** "...At RDS VOR/DME turn right, intercept and follow R 102 RDS to LAKAD to join AWY R19 or M601."

**SOTIV 1P:** "...At RDS VOR/DME turn left, intercept and follow R 053 RDS to SOTIV 13000ft or above to join AWY N136."

**PIROX 1P:** "...At RDS VOR/DME turn left (230KT IAS MAX, Bank angle 25<sup>0</sup>) to track 300<sup>0</sup>, intercept and follow R 345 RDS to PIROX 13000ft or above to join AWY N129."

**BANRO 3P:** "...At RDS VOR/DME turn left (230KT IAS MAX, Bank angle 25<sup>0</sup>) to track 285<sup>0</sup>, intercept and follow R 330 RDS to BANRO 11000ft or above to join AWY G80."