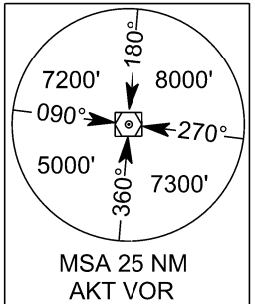
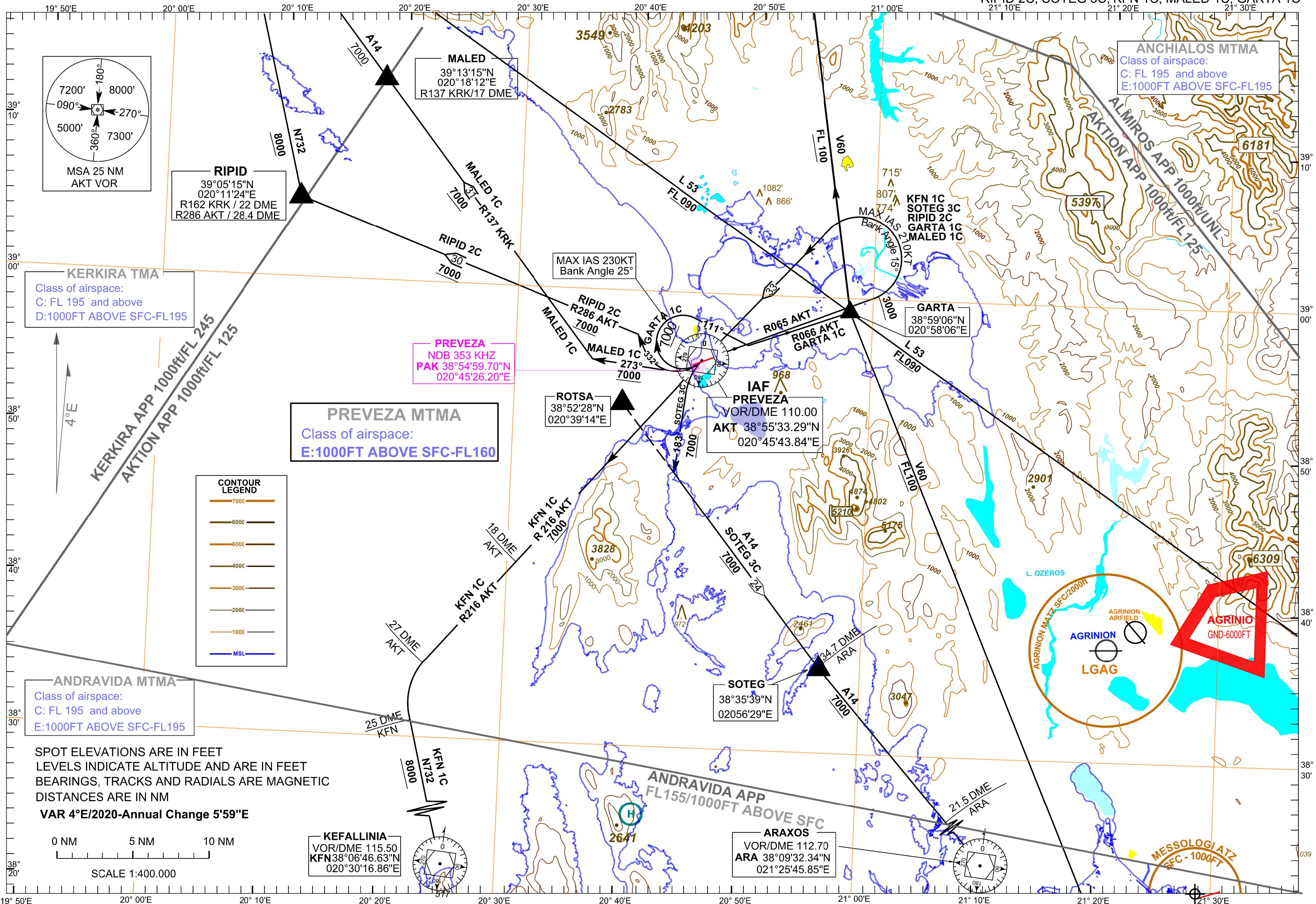


ICAO DOC 8168 5th ed. Amend 1
Change: MALED 1C back page description



RIPID
39°05'15"N
020°11'24"E
R162 KRK / 22 DME
R286 AKT / 28.4 DME

MALED
39°13'15"N
020°18'12"E
R137 KRK/17 DME

ANCHIALOS MTMA
Class of airspace:
C: FL 195 and above
E:1000FT ABOVE SFC-FL195

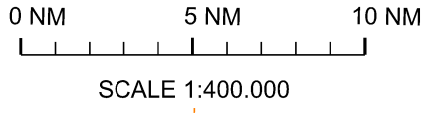
KERKIRA TMA
Class of airspace:
C: FL 195 and above
D:1000FT ABOVE SFC-FL195

PREVEZA
NDB 353 KHZ
PAK 38°54'59.70"N
020°45'26.20"E

PREVEZA MTMA
Class of airspace:
E:1000FT ABOVE SFC-FL160

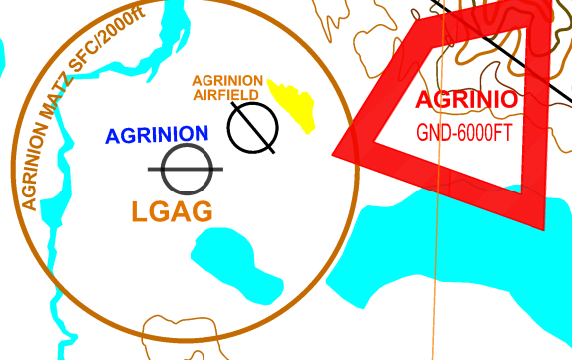
ANDRAVIDA MTMA
Class of airspace:
C: FL 195 and above
E:1000FT ABOVE SFC-FL195

SPOT ELEVATIONS ARE IN FEET
LEVELS INDICATE ALTITUDE AND ARE IN FEET
BEARINGS, TRACKS AND RADIALS ARE MAGNETIC
DISTANCES ARE IN NM
VAR 4°E/2020-Annual Change 5'59"E



KEFALLINIA
VOR/DME 115.50
KFN 38°06'46.63"N
020°30'16.86"E

ARAXOS
VOR/DME 112.70
ARA 38°09'32.34"N
021°25'45.85"E



AGRINIO
GND-6000FT

PREVEZA/AKTIO AIRPORT

AKT VOR/DME - RWY 07L

SIDs : MALED 1C, RIPID 2C, GARTA 1C, SOTEG 3C, KFN 1C

GENERAL:

When for these SIDs an altitude higher than the transition altitude is designated, then ATC unit shall specify an equivalent flight level.

DESIGNATOR	DESCRIPTION	MAX IAS/BANK ANGLE	MIN CLIMB GRADIENT (PDG)	ALTITUDES
MALED 1C	"Climb on R 065 AKT. At 3000ft turn left and proceed to AKT. Then turn right to track 273 ⁰ , intercept and follow R 137 KRK, proceed to MALED to join AWY A14."	210KT/15 ⁰ until the turn at 3000ft of altitude is completed. 230KT/15 ⁰ until the turn at AKT is completed.	4.6 % (280 ft / NM) up to 600ft due to obstacle of 147m (482ft) of altitude at distance 2.73NM (5056m) and on bearing 047 ⁰ from DER of RWY 07L and then up to 7000ft for ATC purposes.	Cross AKT at 7000ft or above.
RIPID 2C	"Climb on R 065 AKT. At 3000ft turn left and proceed to AKT. Then turn right to track 332 ⁰ , intercept and follow R 286 AKT and proceed to RIPID to join AWY N732."	210KT/15 ⁰ until the turn at 3000ft of altitude is completed. 230KT/15 ⁰ until the turn at AKT is completed.	4.6 % (280 ft / NM) up to 600ft due to obstacle of 147m (482ft) of altitude at distance 2.73NM from DER of RWY 07L and on bearing 047 ⁰ and then up to 7000 ft for ATC purposes.	Cross AKT at 7000ft or above. Cross RIPID at 8000ft or above.
GARTA 1C	"Climb on R 065 AKT. At 3000ft turn left and proceed to AKT. Then turn right to track 111 ⁰ , intercept and follow R 066 AKT, proceed to GARTA and join AWY L53 or V60."	210KT/15 ⁰ until the turn at 3000ft of altitude is completed. 230KT/25 ⁰ until turn at AKT is completed.	4.6 % (280 ft / NM) up to 600ft due to obstacle of 147m (482ft) of altitude at distance 2.73NM from DER of RWY 07L and on bearing 047 ⁰ and then up to FL100.	Cross AKT at 7000ft or above. If you join AWY L53, cross GARTA at FL90 or above. If you join AWYV60 cross GARTA at FL100 or above.
SOTEG 3C	"Climb on R 065 AKT. At 3000ft turn left and proceed to AKT. Then turn left to track 183 ⁰ , intercept and follow AWY A14 and proceed to SOTEG."	210KT/15 ⁰ until the turn at 3000ft of altitude is completed. 230KT/15 ⁰ until the turn at AKT is completed.	4.6 % (280 ft / NM) up to 600ft due to obstacle of 147m (482ft) of altitude at distance 2.73NM (5056m) and on bearing 047 ⁰ from DER of RWY 07L and then up to 7000 ft for ATC purposes.	Cross AKT at 7000ft or above.
KFN 1C	"Climb on R 065 AKT. At 3000ft turn left and proceed to AKT, then turn left, intercept and follow R 216 AKT. At R 216 AKT/ 27 DME.Fix turn left, intercept and follow AWY N732 and proceed to KFN."	210KT/15 ⁰ until the turn at 3000ft of altitude is completed. 250KT/25 ⁰ until the turn at R 216 AKT/28.3DME.Fix is completed.	4.6 % (280 ft / NM) up to 600ft due to obstacle of 147m (482ft) of altitude at distance 2.73NM from DER of RWY 07L and on bearing 047 ⁰ and then up to 8000 ft for ATC purposes.	Cross AKT at 7000ft or above. Cross R 216 AKT/ 18DME .Fix at 8000ft or above.