

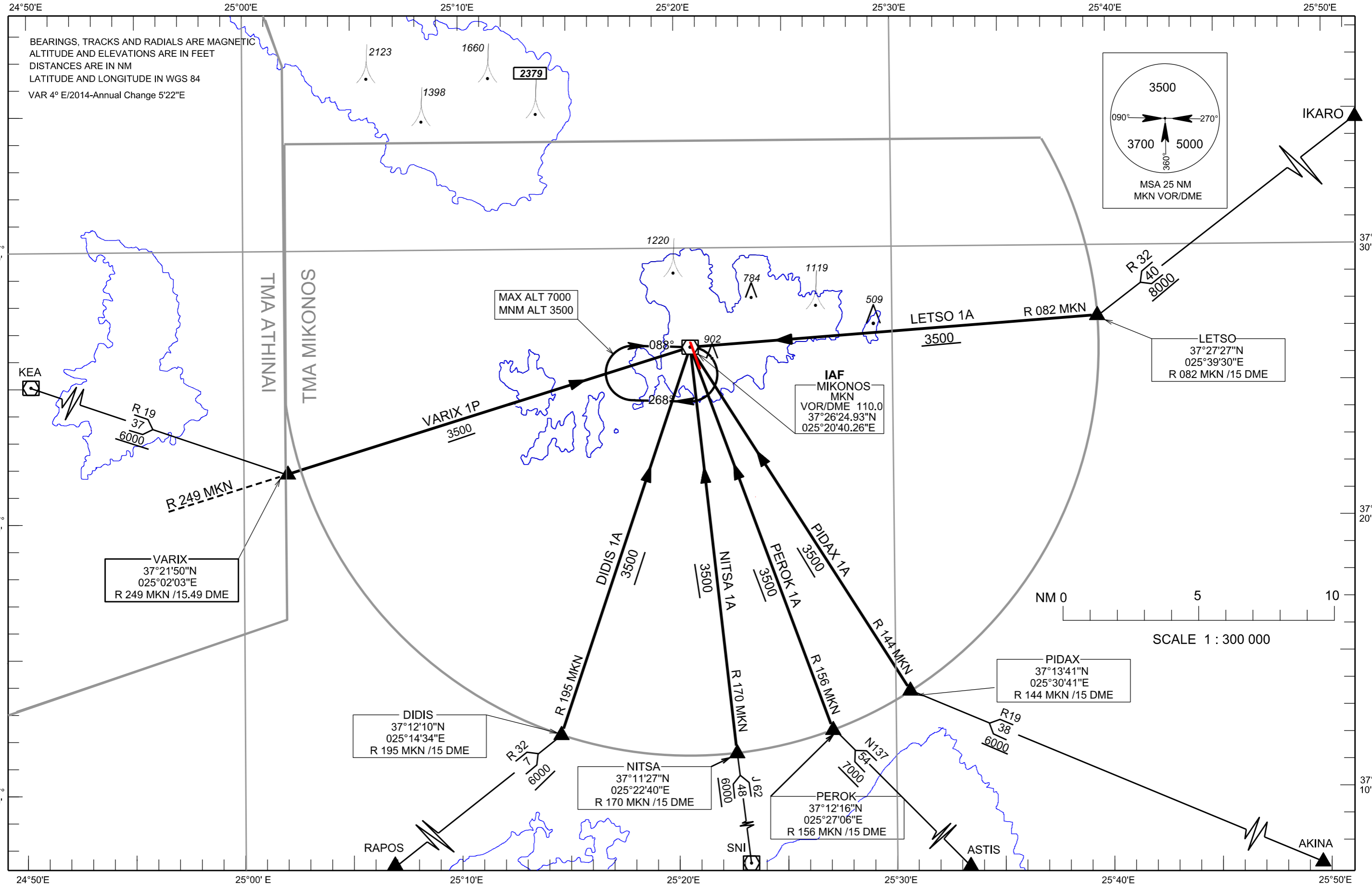
**STANDARD ARRIVAL CHART -  
INSTRUMENT (STAR) - ICAO**

TRANSITION ALTITUDE  
6000 ft

APP 118.750  
ATIS 128.850 TWR 119.875

**MIKONOS**  
RWY 34

VARIX 1P LETSO 1A PIDAX 1A PEROK 1A NITSA 1A DIDIS 1A



**MIKONOS AIRPORT  
MKN VOR/DME RWY 34**

**STARs : VARIX 1P, DIDIS 1A, NITSA 1A, PEROK 1A, PIDAX 1A, LETSO 1A,**

**GENERAL:**

Maintain previously assigned level unless cleared to a lower level by Mikonos ATC.

**VARIX 1P:** After VARIX intercept and follow R 249 MKN to MKN VOR/DME (IAF). Minimum obstacle clearance altitude is 3500ft.

**DIDIS 1A:** After DIDIS intercept and follow R 195 MKN to MKN VOR/DME (IAF). Minimum obstacle clearance altitude is 3500ft.

**NITSA 1A:** After NITSA intercept and follow R 170 MKN to MKN VOR/DME (IAF). Minimum obstacle clearance altitude is 3500ft.

**PEROK 1A:** After PEROK intercept and follow R 156 MKN to MKN VOR/DME (IAF). Minimum obstacle clearance altitude is 3500ft.

**PIDAX 1A:** After PIDAX intercept and follow R 145 MKN to MKN VOR/DME (IAF). Minimum obstacle clearance altitude is 3500ft.

**LETSO 1A:** After LETSO intercept and follow R 082 MKN to MKN VOR/DME (IAF). Minimum obstacle clearance altitude is 3500ft.