

STANDARD DEPARTURE CHART - INSTRUMENT (SID) - ICAO

TRANSITION ALTITUDE 6000 ft

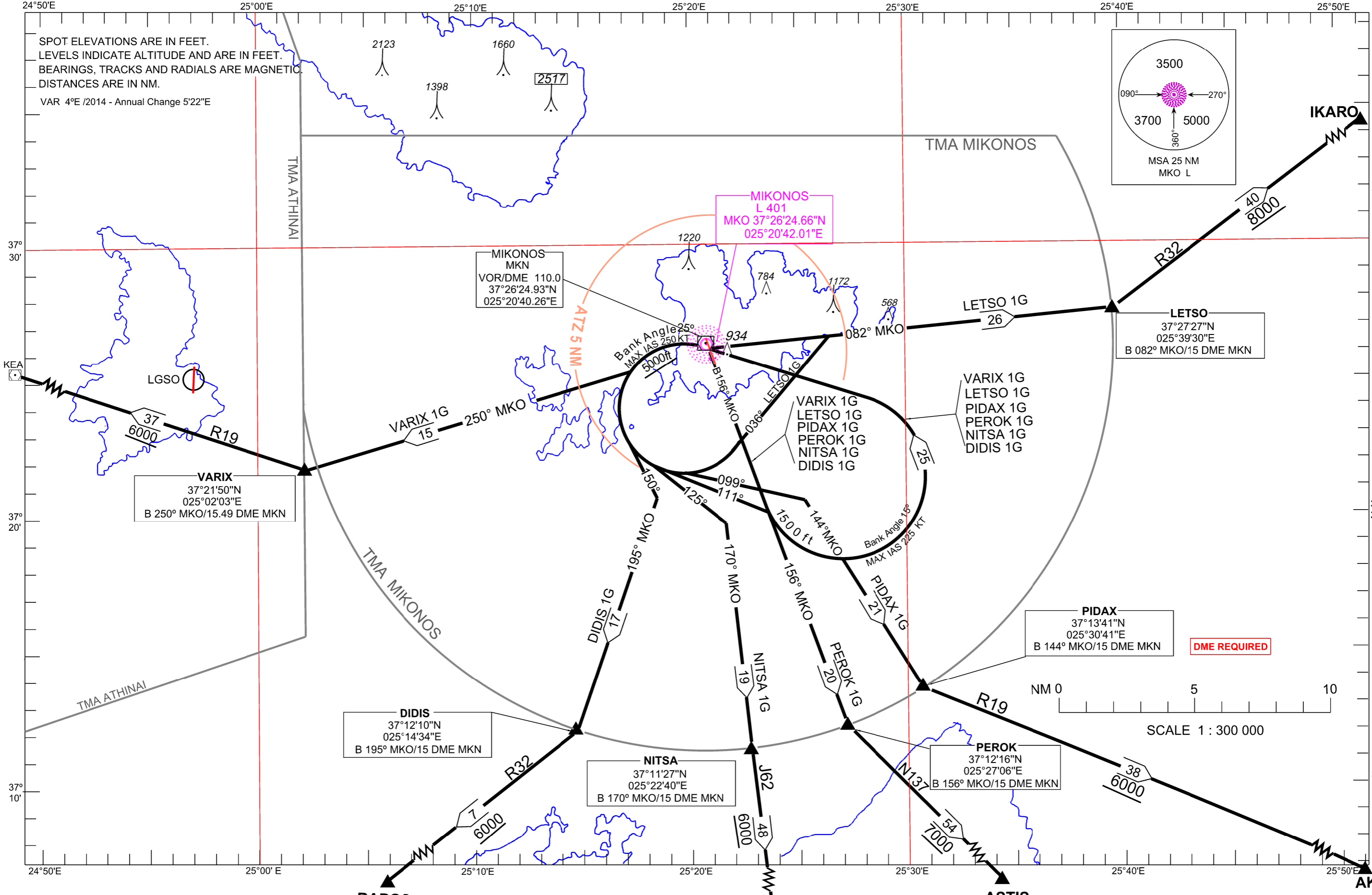
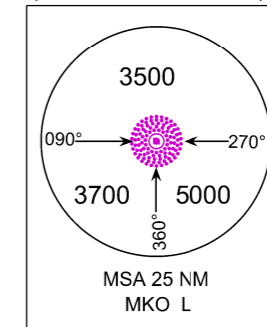
ATIS 128.850 TWR 119.875 APP 118.750

MIKONOS L/DME RWY 16 VARIX 1G LETSO 1G PIDAX 1G PEROK 1G NITSA 1G DIDIS 1G

24°50'E 25°00'E 25°10'E 25°20'E 25°30'E 25°40'E 25°50'E

SPOT ELEVATIONS ARE IN FEET. LEVELS INDICATE ALTITUDE AND ARE IN FEET. BEARINGS, TRACKS AND RADIALS ARE MAGNETIC. DISTANCES ARE IN NM.

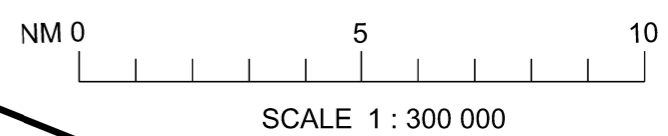
VAR 4°E /2014 - Annual Change 5'22"E



Changes: NDB relocation

PIDAX 37°13'41"N 025°30'41"E B 144° MKO/15 DME MKN

DME REQUIRED



**MIKONOS AIRPORT**  
**SIDs RWY 16**  
**L/DME****VARIX 1G, DIDIS 1G, NITSA 1G, PEROK 1G, PIDAX 1G, LETSO 1G.****GENERAL**

When for these SIDs an altitude higher than the transition altitude is designated, then ATC unit shall specify an equivalent flight level.

**VARIX 1G**

“Climb on Bearing 156° from MKO to 1500ft, turn left (IAS MAX 225kt, Bank angle 15°) to MKO at 5000ft or above. After MKO turn left (IAS MAX 250kt, Bank angle 25°), intercept and follow Bearing 250° from MKO to VARIX at 6000ft or above, to join AWY R19”.

**DIDIS 1G**

“Climb on Bearing 156° from MKO to 1500ft, turn left (IAS MAX 225kt, Bank angle 15°) to MKO at 5000ft or above. After MKO turn left (IAS MAX 250kt, Bank angle 25°) to track 150°, intercept and follow Bearing 195° from MKO to DIDIS at 6000ft or above, to join AWY R32”.

**NITSA 1G**

“Climb on Bearing 156° from MKO to 1500ft, turn left (IAS MAX 225kt, Bank angle 15°) to MKO at 5000ft or above. After MKO turn left (IAS MAX 250kt, Bank angle 25°) to track 125°, intercept and follow Bearing 170° from MKO to NITSA at 6000ft or above, to join AWY J62”.

**PEROK 1G**

“Climb on Bearing 156° from MKO to 1500ft, turn left (IAS MAX 225kt, Bank angle 15°) to MKO at 5000ft or above. After MKO turn left (IAS MAX 250kt, Bank angle 25°) to track 111°, intercept and follow Bearing 156° from MKO to PEROK at 7000ft or above, to join AWY UN137”.

**PIDAX 1G**

“Climb on Bearing 156° from MKO to 1500ft, turn left (IAS MAX 225kt, Bank angle 15°) to MKO at 5000ft or above. After MKO turn left (IAS MAX 250kt, Bank angle 25°) to track 099°, intercept and follow Bearing 144° from MKO to PIDAX at 6000ft or above, to join AWY R19”.

**LETSO 1G**

“Climb on Bearing 156 from MKO to 1500ft, turn left (IAS MAX 225kt, Bank angle 15°) to MKO at 5000ft or above. After MKO turn left (IAS MAX 250kt, Bank angle 25°) to track 036°, intercept and follow Bearing 082° from MKO to LETSO at 8000ft or above, to join AWY R32”.