

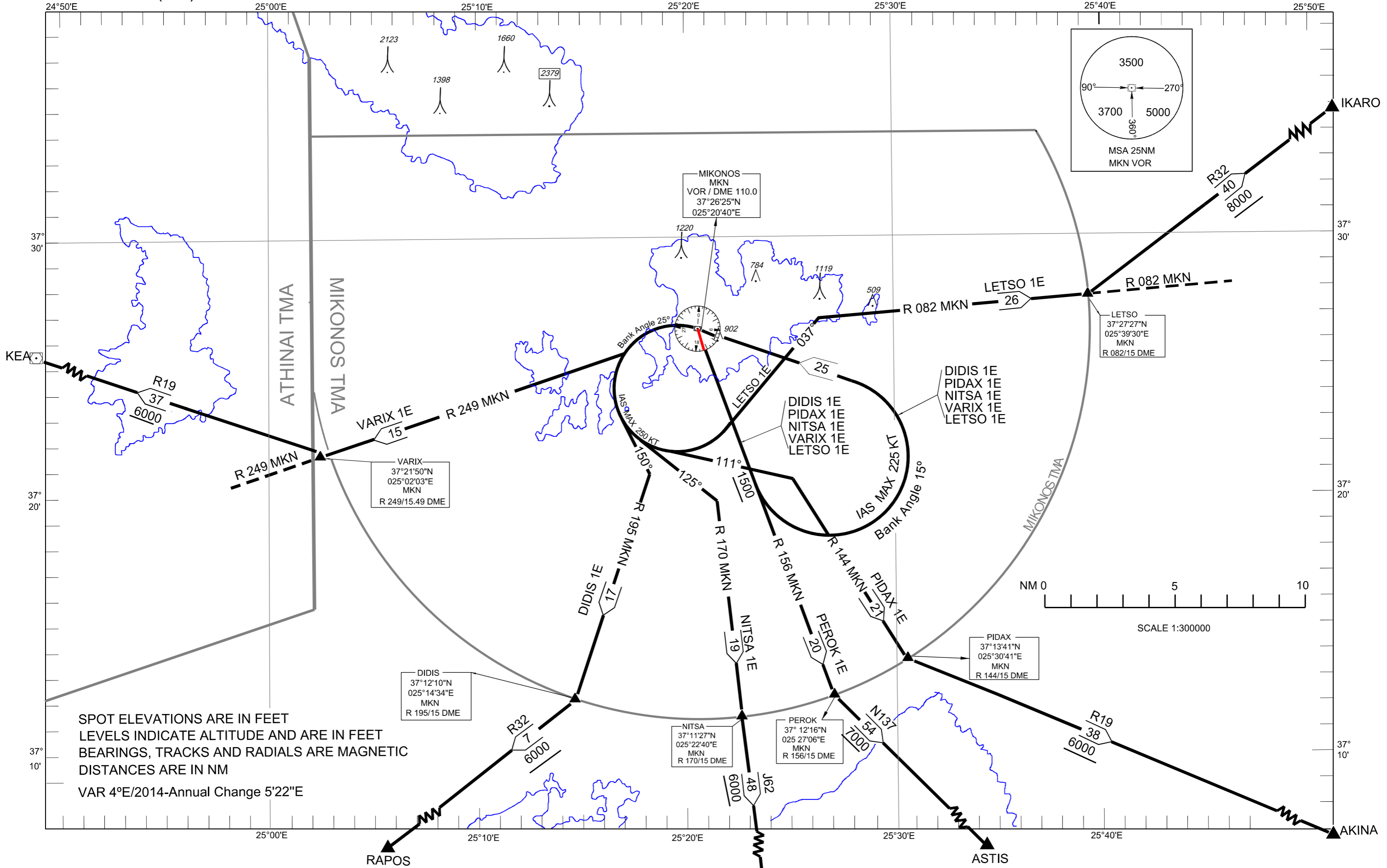
STANDARD DEPARTURE CHART -  
INSTRUMENT (SID) - ICAO

TRANSITION ALTITUDE  
6000 ft

ATIS 128.850 TWR 119.875  
APP 118.750

MIKONOS  
RWY 16

VARIX 1E PIDAX 1E NITSA 1E LETSO 1E PEROK 1E DIDIS 1E



SPOT ELEVATIONS ARE IN FEET  
LEVELS INDICATE ALTITUDE AND ARE IN FEET  
BEARINGS, TRACKS AND RADIALS ARE MAGNETIC  
DISTANCES ARE IN NM  
VAR 4°E/2014-Annual Change 5'22"E

**MIKONOS AIRPORT  
SIDs - RWY 16**

**VARIX 1E, DIDIS 1E, NITSA 1E, PEROK 1E, PIDAX 1E, LETSO 1E.**

**GENERAL**

When for these SIDs an altitude higher than the transition altitude is designated, then ATC unit shall specify an equivalent flight level.

**For SIDs VARIX 1E, DIDIS 1E, NITSA 1E, PEROK 1E, PIDAX 1E, LETSO 1E:**

“Climb on R 156 MKN to 1500ft, turn left (IAS MAX 225kt, Bank angle 15<sup>0</sup>) to MIKONOS VOR/DME at 5000ft or above. Thence ...”

**VARIX 1E**

“...After MIKONOS VOR/DME turn left (IAS MAX 250kt, Bank angle 25<sup>0</sup>), intercept and follow R 249 MKN to VARIX (R 249 MKN/15 DME Fix) at 6000ft or above to join AWY R19”.

Total length of SID: 40nm.

**DIDIS 1E**

“...After MIKONOS VOR/DME turn left (IAS MAX 250kt, Bank angle 25<sup>0</sup>) to track 150<sup>0</sup>, intercept and follow R 195 MKN to DIDIS (R 195 MKN/15 DME Fix) at 6000ft or above to join AWY R32”.

Total length of SID: 42nm.

**NITSA 1E**

“...After MIKONOS VOR/DME turn left (IAS MAX 250kt, Bank angle 25<sup>0</sup>) to track 125<sup>0</sup>, intercept and follow R 170 MKN to NITSA (R 170 MKN/15 DME Fix) at 6000ft or above to join AWY J62”.

Total length of SID: 44nm.

**PEROK 1E**

“...After MIKONOS VOR/DME turn left (IAS MAX 250kt, Bank angle 25<sup>0</sup>) to track 111<sup>0</sup>, intercept and follow R 156 MKN to PEROK (R156 MKN/15 DME Fix) at 7000ft or above to join AWY N137”.

Total length of SID: 45nm.

**PIDAX 1E**

“...After MIKONOS VOR/DME turn left (IAS MAX 250kt, Bank angle 25<sup>0</sup>) to track 111<sup>0</sup>, intercept and follow R 144 MKN to PIDAX (R144 MKN/15 DME Fix) at 6000ft or above to join AWY R19.”

Total length of SID: 46nm.

**LETSO 1E**

“...After MIKONOS VOR/DME turn left (IAS MAX 250kt, Bank angle 25<sup>0</sup>) to track 037<sup>0</sup>, intercept and follow R 082 MKN to LETSO (R 082 MKN/15 DME Fix) at 8000ft or above to join AWY R32.”

Total length of SID: 51nm.