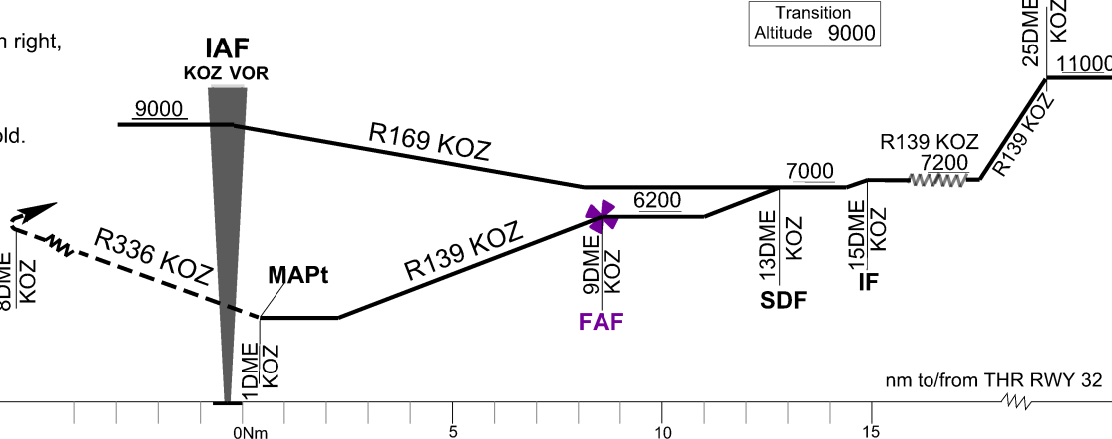


SPOT ELEVATIONS ARE IN FEET
LEVELS INDICATE ALTITUDE AND ARE IN FEET
BEARINGS, TRACKS AND RADIALS ARE MAGNETIC
DISTANCES ARE IN NM
VAR 5°E/2019-Annual Change 5'55"E

MISSED APPROACH
Climb straight ahead to KOZ, turn right,
intercept and follow R 336 KOZ.
At R 336 KOZ/8DME turn right
(IAS MAX 185Kt), intercept and
follow R 009 KOZ to KOZ and hold.
Climb to 9000ft.



OCA / H	A	B	C	D
Straight-in Approach	N/A	N/A		N/A
Circling	N/A	N/A	4630 (2571)	N/A

NOTE 1: Circling only during Daytime.
See back NOTES 2 and 3.

NOTE 2**A. Obstacles in Circling CAT A Area.**

Obstacle type Elevation	Bearing from KOZ VOR	Distance from KOZ VOR/DME	Coordinates in WGS-84	Remarks
Terrain 806m/2644FT	071 ⁰	1.93 NM	40 ⁰ 17' 33.99" N 021 ⁰ 52' 51.94" E	Penetrates the Inner Horizontal Surface by 161m.

B. Obstacles in Circling CAT B Area.

All the above obstacles plus the following.

Obstacle type Elevation	Bearing from KOZ VOR	Distance from KOZ VOR/DME	Coordinates in WGS-84	Remarks
Terrain 830m/2722FT	314 ⁰	2.47 NM	40 ⁰ 18' 58.77" N 021 ⁰ 48' 20.24" E	Penetrates the Inner Horizontal Surface by 185m.
Terrain 806m/2644FT	321 ⁰	2.37 NM	40 ⁰ 19' 04.34" N 021 ⁰ 48' 43.21" E	Penetrates the Inner Horizontal Surface by 161m.
Terrain 821m/2693FT	332 ⁰	2.86 NM	40 ⁰ 19' 44.99" N 021 ⁰ 49' 01.32" E	Penetrates the Conical Surface by 157m.
Terrain 806m/2644FT	351 ⁰	2.66 NM	40 ⁰ 19' 46.63" N 021 ⁰ 50' 22.72" E	Penetrates the Inner Horizontal Surface by 161m.
Terrain 903m/2962FT	352 ⁰	3.14 NM	40 ⁰ 20' 15.27" N 021 ⁰ 50' 28.08" E	Penetrates the Conical Surface by 206m.
Terrain 1032m/3385FT	013 ⁰	2.79 NM	40 ⁰ 19' 46.32" N 021 ⁰ 51' 28.22" E	Penetrates the Conical Surface by 359m.

C. Obstacles in Circling CAT C Area.

All the above obstacles plus the following.

Obstacle type Elevation	Bearing from KOZ VOR	Distance from KOZ VOR/DME	Coordinates in WGS-84	Remarks
Terrain 915m/3001FT	310 ⁰	4.77 NM	40 ⁰ 20' 27.97" N 021 ⁰ 46' 00.09" E	Penetrates the Horizontal Surface of 145m above RWY by 170m.
Terrain 885m/2903FT	325 ⁰	4.78 NM	40 ⁰ 21' 16.58" N 021 ⁰ 47' 20.79" E	Penetrates the Horizontal Surface of 145m above RWY by 140m.
Terrain 839m/2752FT	337 ⁰	3.99 NM	40 ⁰ 20' 54.22" N 021 ⁰ 49' 05.31" E	Antenna -Penetrates the Horizontal Surface of 145m above RWY by 94m.
Terrain 816m/2676FT	342 ⁰	3.55 NM	40 ⁰ 20' 38.22" N 021 ⁰ 49' 45.56" E	Antenna. Penetrates the Conical Surface by 83m.
Terrain 926m/3037FT	029 ⁰	3.90 NM	40 ⁰ 20' 21.90" N 021 ⁰ 53' 16.50" E	Penetrates the Horizontal Surface of 145m above RWY by 181m.
Terrain 814m/2670FT	050 ⁰	3.37 NM	40 ⁰ 19' 02.67" N 021 ⁰ 54' 01.89" E	Penetrates the Horizontal Surface of 145m above RWY by 69 m.
Terrain 916m/3004FT	065 ⁰	3.73 NM	40 ⁰ 18' 24.19" N 021 ⁰ 55' 00.09" E	Penetrates the Horizontal Surface of 145m above RWY by 171 m.

NOTE 3**Coordinates of significant points in WGS-84**

IF (R 139 KOZ/15 DME fix)	: 40° 04' 56.7"N – 022° 01' 57.0"E
SDF of initial segment (R 139 KOZ/13 DME fix)	: 40° 06' 32.6"N – 022° 00' 26.4"E
FAF (R 139 KOZ/9 DME fix)	: 40° 09' 48.8"N – 021° 57' 20.9"E
MAPt (R 139 KOZ/1 DME fix)	: 40° 16' 17.9"N – 021° 51' 11.8"E
TP of missed approach (R 336 KOZ/8 DME fix)	: 40° 24' 43.2"N – 021° 47' 02.7"E