

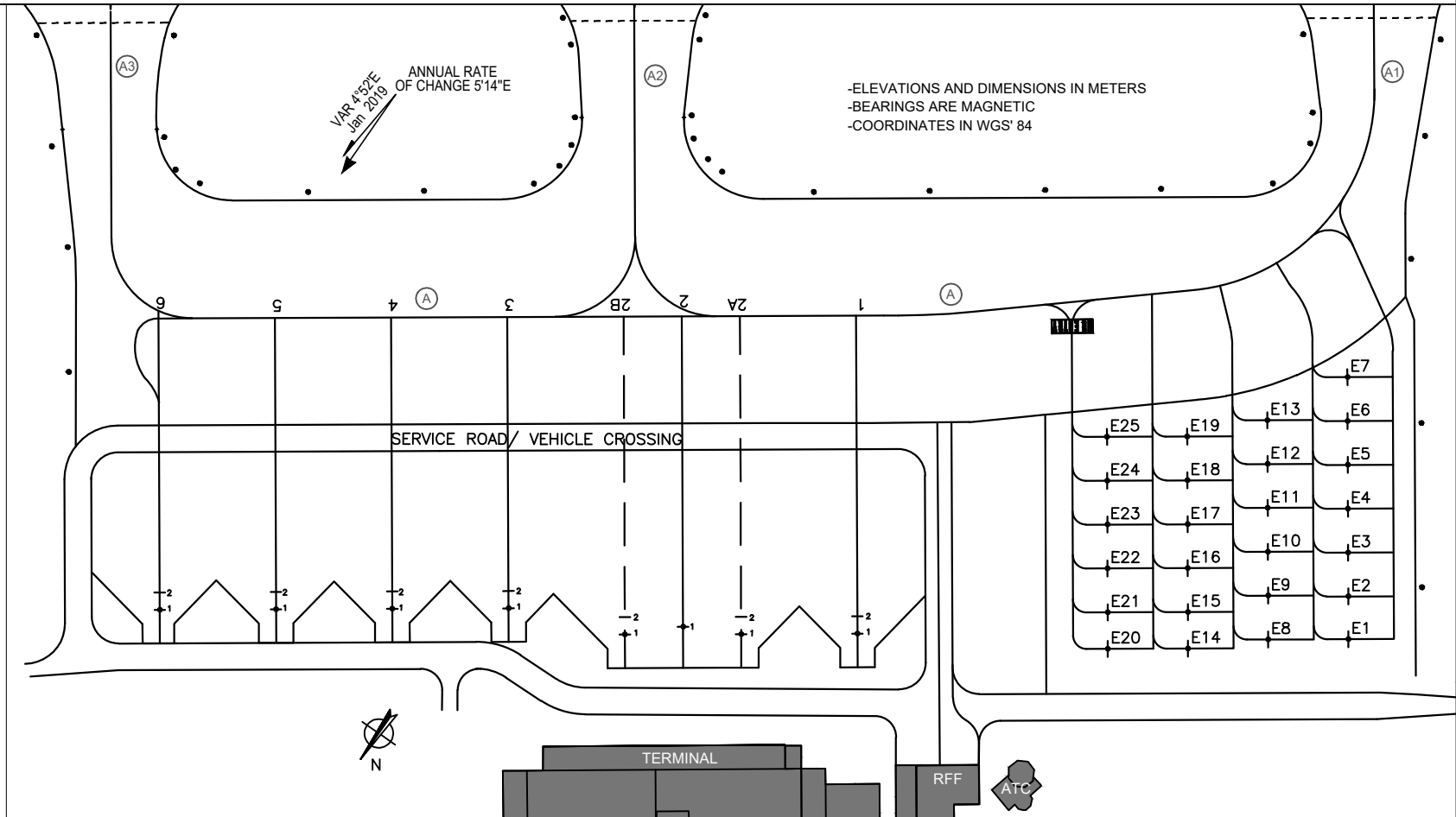
AIRCRAFT PARKING/ DOCKING CHART- ICAO

APRON ELEV 5.40 M / 17.7 FT

KAVALA / MEGAS ALEXANDROS Airport

INS COORDINATES FOR AIRCRAFT STANDS		
MAIN APRON		
POINT	LATITUDE	LONGITUDE
1	405515.62N	0243722.22E
2A	405516.42N	0243723.75E
2	405516.75N	0243724.58E
2B	405517.22N	0243725.28E
3	405517.76N	0243727.05E
4	405518.56N	0243728.58E
5	405519.36N	0243730.11E
6	405520.16N	0243731.64E

INS COORDINATES FOR AIRCRAFT STANDS		
GA APRON		
POINT	LATITUDE	LONGITUDE
E1	405512.31N	0243715.69E
E2	405511.88N	0243716.08E
E3	405511.44N	0243716.48E
E4	405511.01N	0243716.88E
E5	405510.57N	0243717.28E
E6	405510.13N	0243717.68E
E7	405509.69N	0243718.08E
E8	405512.86N	0243716.75E
E9	405512.42N	0243717.15E
E10	405511.99N	0243717.54E
E11	405511.55N	0243717.94E
E12	405511.11N	0243718.34E
E13	405510.67N	0243718.74E
E14	405513.50N	0243717.72E
E15	405513.14N	0243718.06E
E16	405512.70N	0243718.45E
E17	405512.26N	0243718.85E
E18	405511.82N	0243719.25E
E19	405511.38N	0243719.65E
E20	405514.06N	0243718.78E
E21	405513.69N	0243719.11E
E22	405513.25N	0243719.51E
E23	405512.81N	0243719.91E
E24	405512.38N	0243720.31E
E25	405511.94N	0243720.71E



CHANGES:
- ATIS INFORMATION



LEGEND	
TAXIWAY EDGE LIGHTS	●
INTERMEDIATE HOLDING POSITION	-----
TAXIWAY DESIGNATION	(A1)
AIRCRAFT STAND	2
-APRON: ASPHALT -THE COORDINATES PROVIDED REPRESENT THE FRONT STOP BAR OF THE STAND (1)	

ATS COMMUNICATIONS FACILITIES			
SERVICE DESIGNATION	CALL SIGN	FREQUENCY/ VHF CH	REMARKS
APP	MEGAS ALEXANDROS APPROACH	124.850 122.10 257.800 MHZ 121.500 243.000 MHZ	Primary freq cover: FL 250/ 50NM RGA MIL RGA Emergency MIL Emergency
TWR	MEGAS ALEXANDROS TOWER	118.400 122.10 257.800 MHZ 121.500 243.000 MHZ	Primary freq cover: FL 80/ 16NM RGA MIL RGA Emergency MIL Emergency
G/A/G	MEGAS ALEXANDROS RADIO	5637 KHZ 2989 KHZ	Primary freq Primary freq
ATIS	KAVALA MEGAS ALEXANDROS AIRPORT INFORMATION	128.155MHZ	Cover: FL 200/ 60 NM

All ATS Communication Facilities under responsibility of CAA.
For ATIS see also ENR 1.1.1.5.3.3