

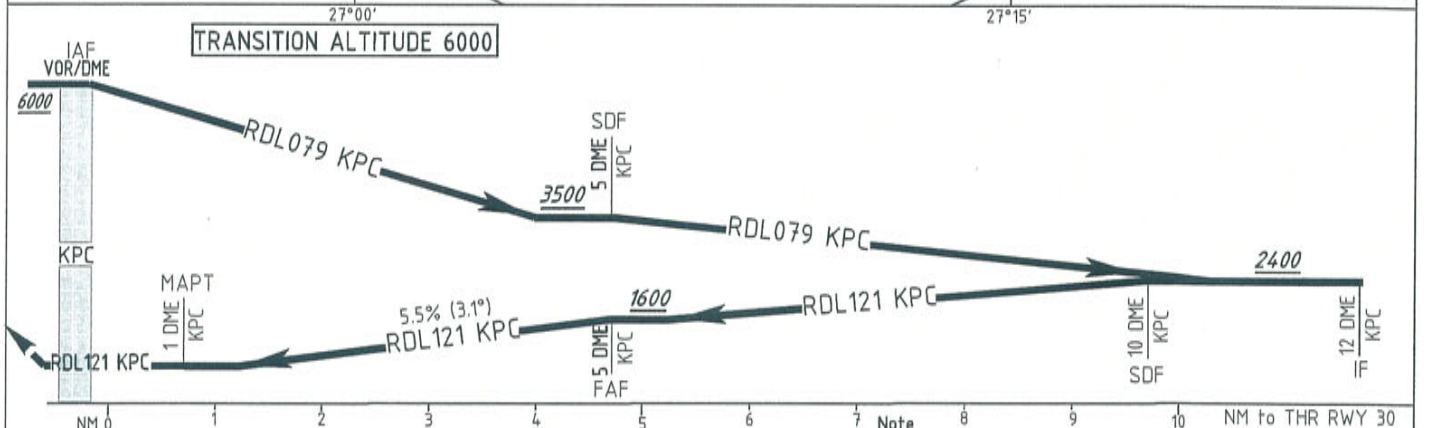
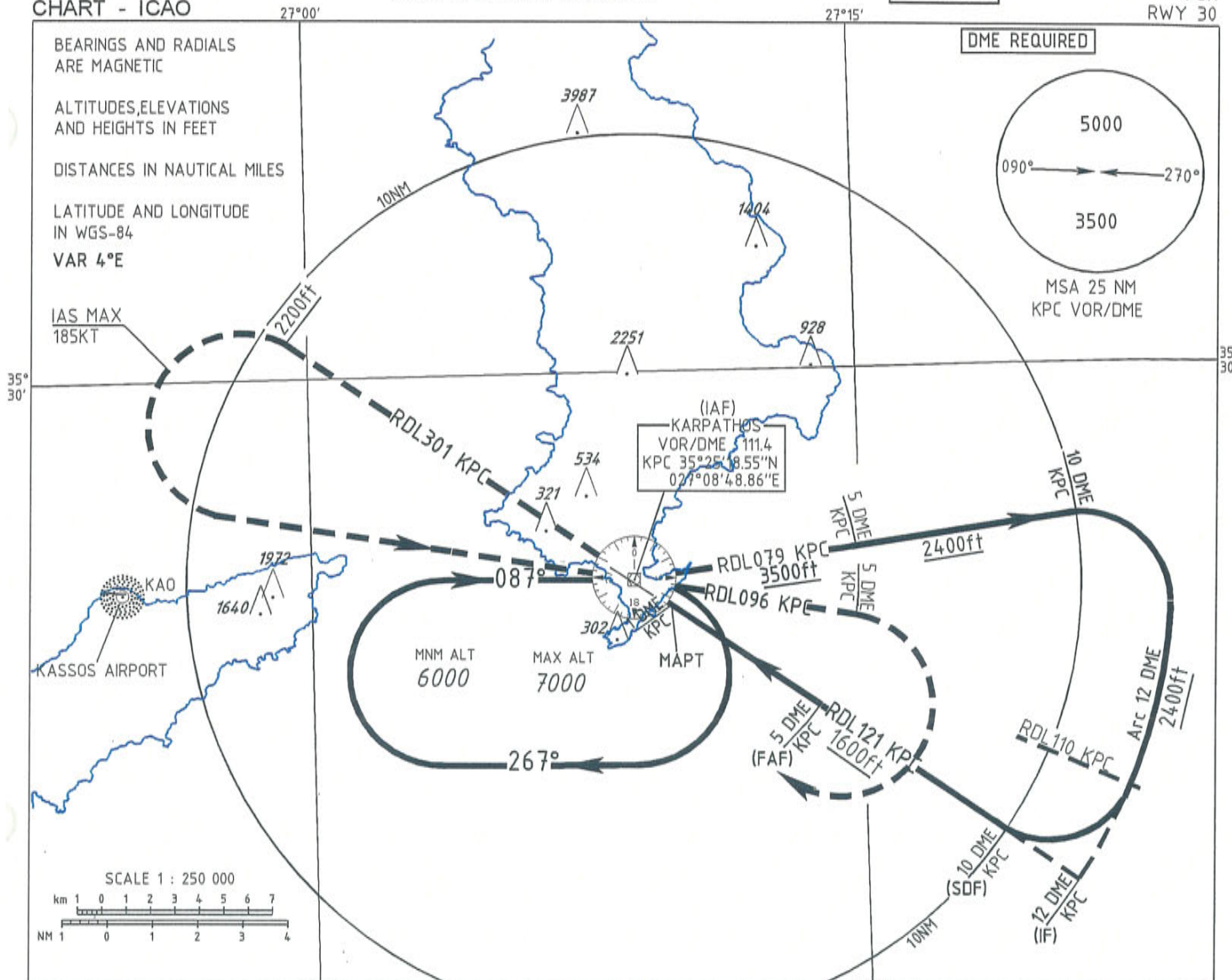
AIP GREECE
INSTRUMENT
APPROACH
CHART - ICAO

AERODROME ELEV 66ft
HEIGHTS RELATED TO AD ELEV

AFIS 123.2

KARPATHOS

VOR
RWY 30



MISSED APPROACH
Climb on RDL121 KPC to KPC. After KPC VOR intercept and follow RDL301 KPC. At 2200 of altitude turn left to KPC and enter the holding pattern, climb 6000 of altitude (or above if instructed by ATC). Climb gradient 3.0% (182 FT/NM). See Note

Note
Missed Approach for acft utilising climb gradient 2.5%. Climb on RDL121 KPC to KPC. After KPC intercept and follow RDL301 KPC. At 2200 of altitude turn left to KPC. After KPC intercept and follow RDL096 KPC. At RDL096 KPC/5 DME Fix turn right to KPC and enter the holding pattern. Climb 6000 of altitude (or above if instructed by ATC).

OCA/H	A	B	C	D
Straight-in Approach	850 (784)			
Circling SW of RWY	850 (784)	900 (834)		

Altitude / Height on Final Approach								
	4 DME	3 DME	2 DME					
	1266 (1200)	932 (866)	598 (532)					
Rate of descent	KT	110	120	130	140	150	160	185
	ft/min	612	668	724	779	835	891	1030

Coordinates of significant points
IF (RDL121 KPC/12 DME): 35°18'18.65"N 027°20'45.37"E
FAF (RDL121 KPC/5 DME): 35°22'23.83"N 027°13'48.25"E
SDF (RDL121 KPC/10 DME): 35°19'28.90"N 027°18'47.03"E
MAPT (RDL121 KPC/1 DME): 35°24'43.83"N 027°09'49.13"E