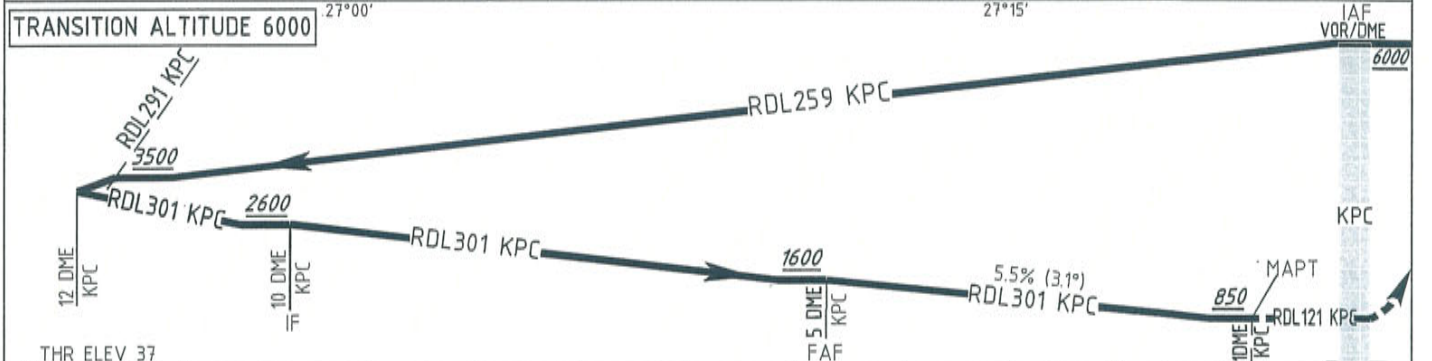
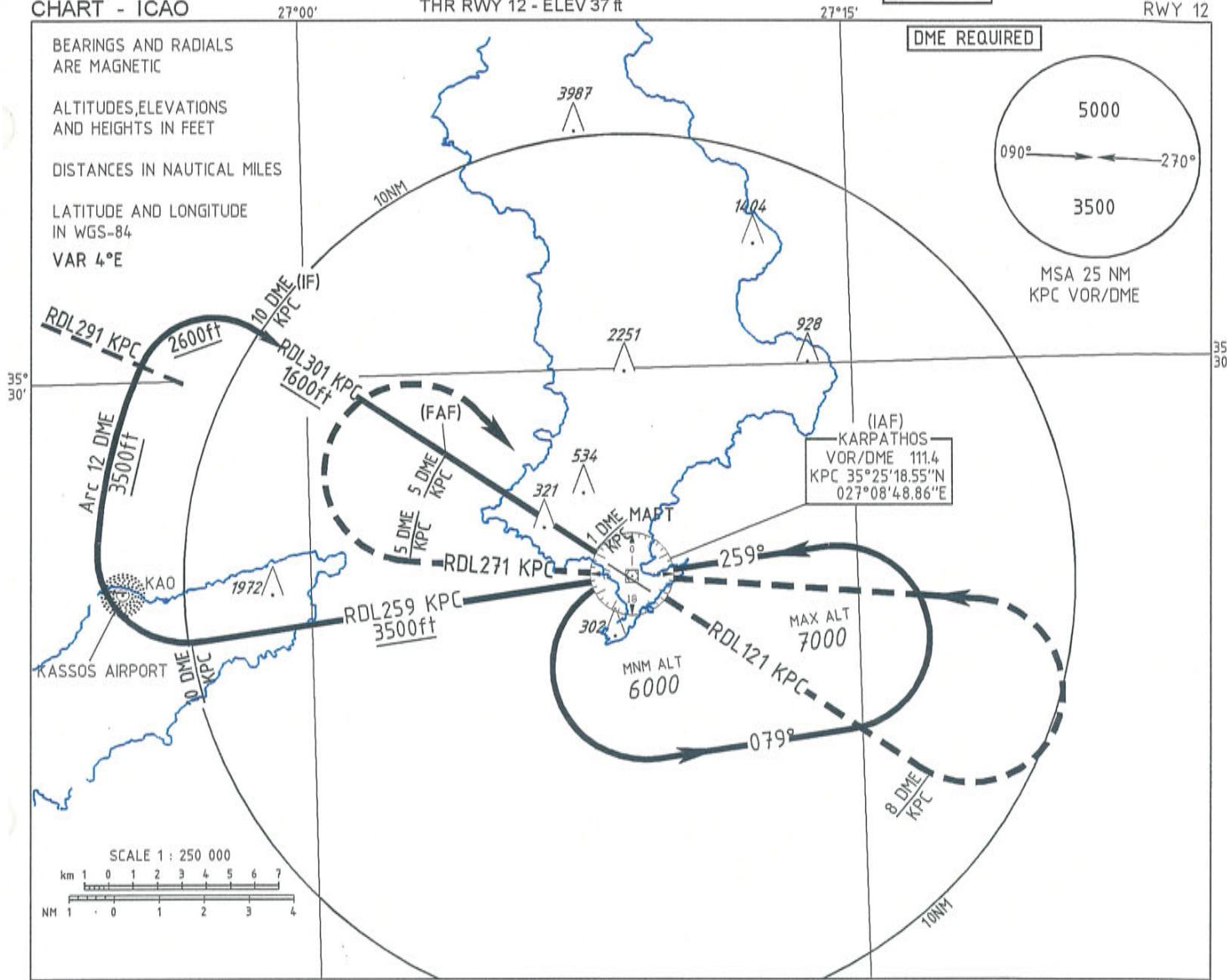


AERODROME ELEV 66 ft
HEIGHTS RELATED TO
THR RWY 12 - ELEV 37 ft

AFIS 123.2



MISSED APPROACH
Climb on RDL301 KPC to KPC. After KPC VOR intercept and follow RDL121 KPC. At RDL121 KPC/8 DME Fix turn left to KPC and enter the holding pattern, climb 6000 of altitude (or above if instructed by ATC). Climb gradient 3.6% (219 FT/NM). See Note

Note
Missed Approach for acft utilising climb gradient 2.5%. Climb on RDL301 KPC to KPC. After KPC VOR intercept and follow RDL121 KPC. At RDL121 KPC/8 DME Fix turn left to KPC. After KPC VOR intercept and follow RDL271 KPC. At RDL271 KPC/5 DME Fix turn right to KPC and enter the holding pattern. Climb 6000 of altitude (or above if instructed by ATC).

OCA/H	A	B	C	D
Straight-in Approach		850 (813)		
Circling SW of RWY	850 (784)		900 (834)	

Altitude / Height on Final Approach

	4 DME	3 DME	2 DME
	1266 (1200)	932 (866)	598 (532)

Rate of descent	KT	110	120	130	140	150	160	185
	ft/min	612	668	724	779	835	891	1030

Coordinates of significant points
IF (RDL301 KPC/10 DME): 35°31'03.55"N 026°58'43.98"E
MAPT (RDL301 KPC/1 DME): 35°25'53.16"N 027°07'48.95"E
FAF (RDL301 KPC/5 DME): 35°28'10.67"N 027°03'47.49"E
RDL121 KPC/8 DME: 35°20'40.79"N 027°16'49.02"E