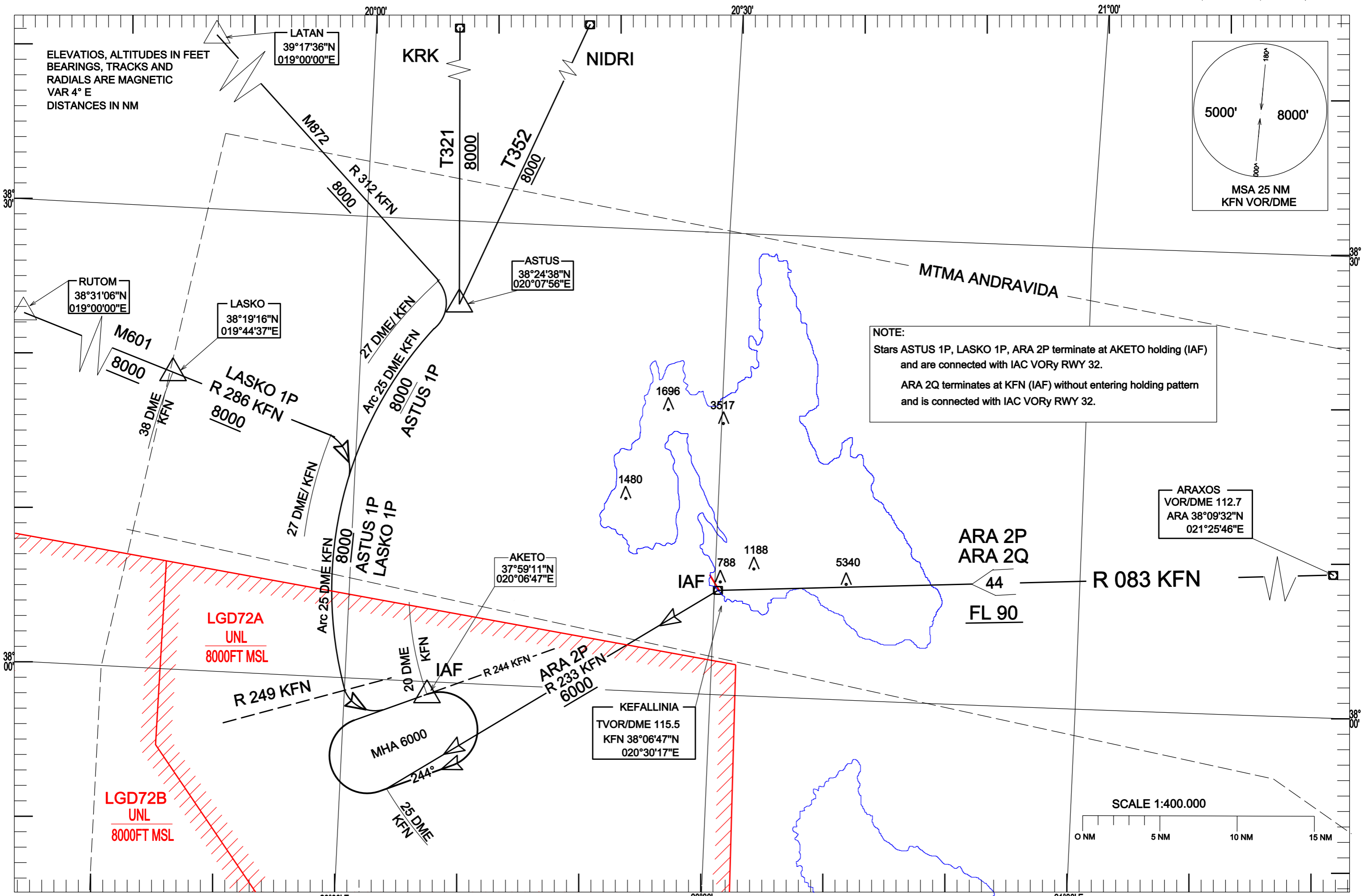


STANDARD ARRIVAL CHART
INSTRUMENT (STAR) - ICAO

TRANSITION ALTITUDE
8000 ft

ANDRAVIDA APP 121.125, TWR 122.250
ATIS 126.450

KEFALLINIA
VOR / DME - RWY 32
ASTUS 1P, LASKO 1P, ARA 2P, ARA 2Q



NOTE:
 Stars ASTUS 1P, LASKO 1P, ARA 2P terminate at AKETO holding (IAF) and are connected with IAC VORy RWY 32.
 ARA 2Q terminates at KFN (IAF) without entering holding pattern and is connected with IAC VORy RWY 32.