

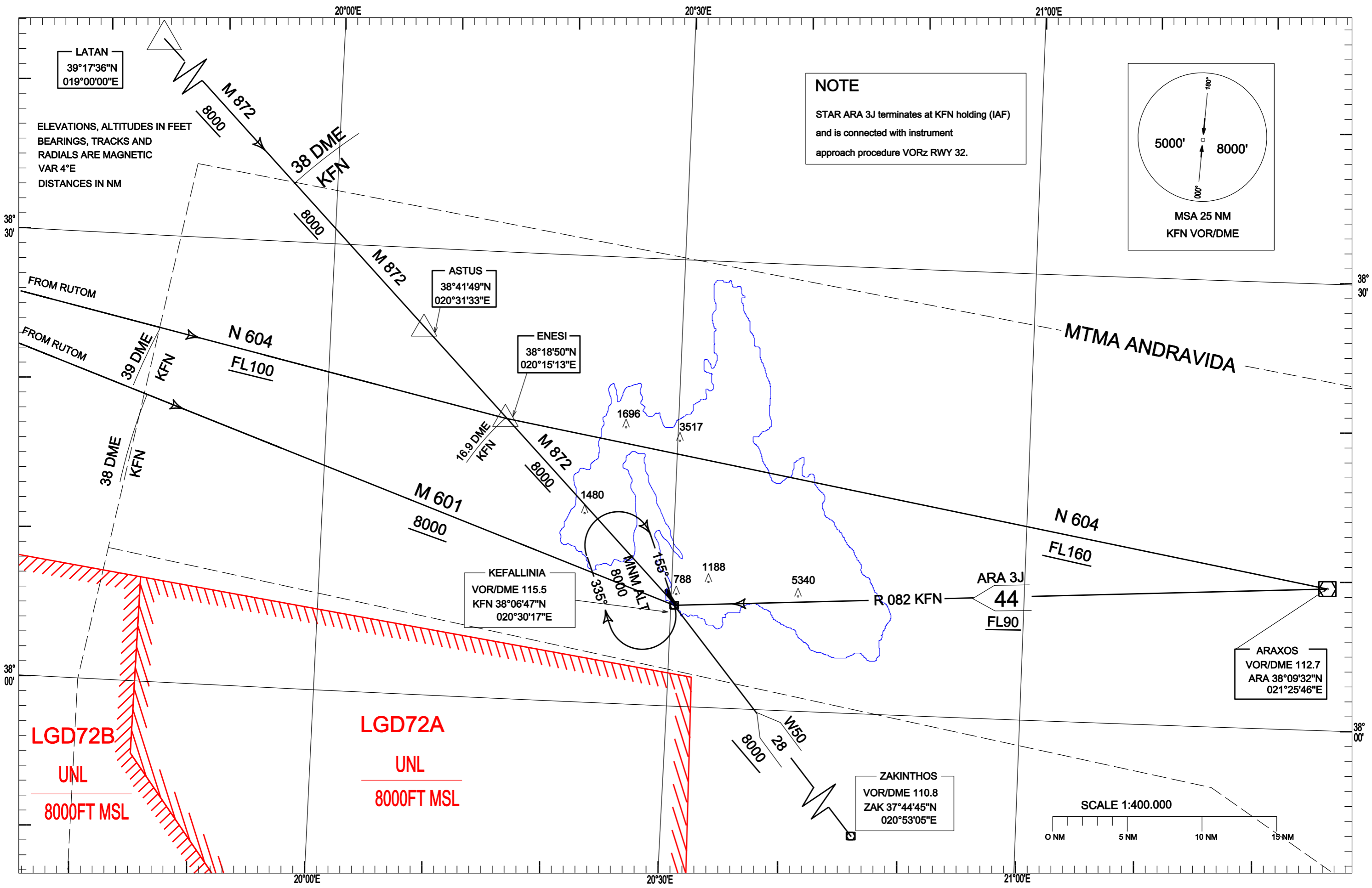
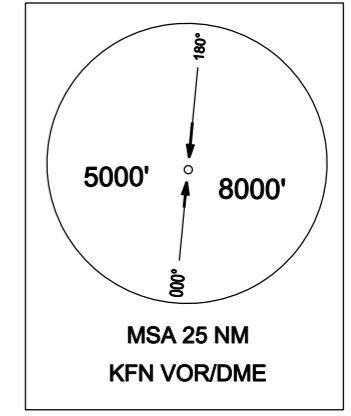
TRANSITION ALTITUDE
8000ft

ANDRAVIDA APP 121.125
TWR 122.250
ATIS 126.450

LATAN
39°17'36"N
019°00'00"E

ELEVATIONS, ALTITUDES IN FEET
BEARINGS, TRACKS AND
RADIALS ARE MAGNETIC
VAR 4°E
DISTANCES IN NM

NOTE
STAR ARA 3J terminates at KFN holding (IAF)
and is connected with instrument
approach procedure VORz RWY 32.



ASTUS
38°41'49"N
020°31'33"E

ENESI
38°18'50"N
020°15'13"E

KEFALLINIA
VOR/DME 115.5
KFN 38°06'47"N
020°30'17"E

ARAXOS
VOR/DME 112.7
ARA 38°09'32"N
021°25'46"E

ZAKINTHOS
VOR/DME 110.8
ZAK 37°44'45"N
020°53'05"E

LGD72B
UNL
8000FT MSL

LGD72A
UNL
8000FT MSL

