

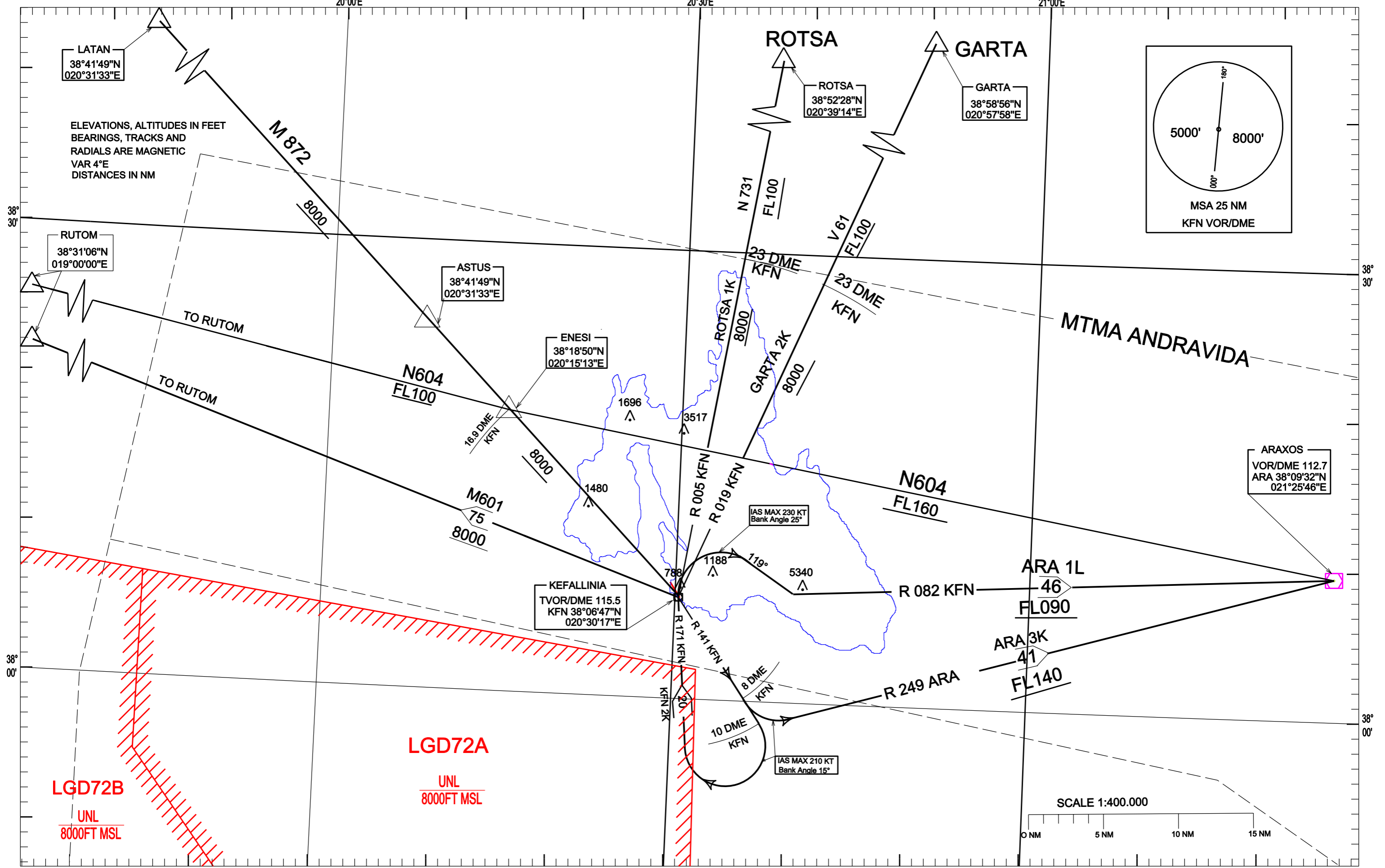
STANDARD DEPARTURE CHART
INSTRUMENT (SID) - ICAO

TRANSITION ALTITUDE
8000 FT

TWR 122.250, ANDRAVIDA APP 121.125

VOR / DME - RWY 14

RO TSA 1K, GART A 2K, ARA 3K, KFN 2K, ARA 1L



KEFALLINIA AIRPORT

KFN VOR/DME RWY 14

SIDs : ARA 3K, KFN 2K, ROTSA 1K, GARTA 2K, ARA 1L

GENERAL:

- When for these SIDs an altitude higher than the transition altitude is designated, then ATC unit shall specify an equivalent flight level.
- For this SIDs a visual climb up to 200 ft is required and then continue with the minimum PDG (Procedure Design Gradient) as described in the following table.

DESIGNATOR	DESCRIPTION	MAX IAS/ BANK ANGLE	MIN CLIMB GRADIENT (PDG)	ALTITUDES
ARA 3K	“Climb on RDL 141 KFN. At RDL 141 KFN / 8 DME .Fix turn left ,intercept and follow RDL 249 ARA and proceed to ARA VOR.”	210KT/15 ⁰ until the turn at RDL 141 KFN / 8 DME .Fix is completed	5 % (304 ft / NM) up to FL140	Cross ARA at FL140 or above.
KFN 2K	“Climb on RDL 141 KFN .At RDL 141 KFN / 10 DME .Fix turn right, intercept and follow RDL 171 KFN to KFN VOR and then to assigned route by ATC unit”	210KT/15 ⁰ until the turn at RDL 141 KFN / 10 DME .Fix is completed.	4.6 % (280 ft / NM) up to 8000ft QNH or above	Cross KFN at 8000ft QNH or above.
RO TSA 1K	“Climb on RDL 141 KFN. At RDL 141 KFN / 10 DME .Fix turn right, intercept and follow RDL 171 KFN to KFN VOR, then turn right, intercept and follow RDL 005 KFN to join AWY N 731 and proceed to ROTSA.”	210KT/15 ⁰ until the turn at RDL 141 KFN / 10 DME .Fix is completed.	4.6 % (280 ft / NM) up to FL100 or above	Cross KFN at 8000ft QNH or above. Cross RDL 005 KFN / 23DME .Fix at FL100 or above.
GARTA 2K	“Climb on RDL 141 KFN .At RDL 141 KFN / 10 DME .Fix turn right, intercept and follow RDL 171 KFN to KFN VOR, then turn right, intercept and follow RDL 019 KFN to join AWY V 61 and proceed to GARTA.”	210KT/15 ⁰ until the turn at RDL 141 KFN / 10 DME .Fix is completed.	4.6 % (280 ft / NM) up to FL100 or above	Cross KFN at 8000ft QNH or above. Cross RDL 019 KFN / 23DME .Fix at FL100 or above.
ARA 1L	“Climb on RDL 141 KFN. At RDL 141 KFN / 10 DME .Fix turn right, intercept and follow RDL 171 KFN to KFN, then turn right to track 119 ⁰ , intercept and follow RDL 082 KFN and proceed to ARA.”	210KT/15 ⁰ until the turn at RDL 141 KFN / 10 DME .Fix is completed. 230KT/25 ⁰ until the turn over KFN is completed.	5,5 % (334 ft/NM) up to 9000 ft (QNH)	Cross KFN at FL 90 or above. Cross ARA at FL140 or above.

PDG	GROUND SPEED	100	120	140	160	180	200
5.0%304FT/NM	ROC (FT/Min)	506	608	709	810	911	1013
5.5%334FT/NM	ROC(FT/Min)	557	668	780	891	1003	1114
4.6%280FT/NM	ROC(FT/Min)	465	559	652	745	839	931