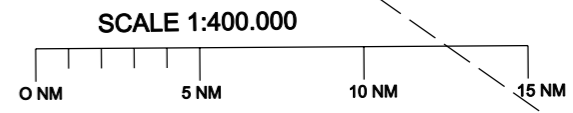
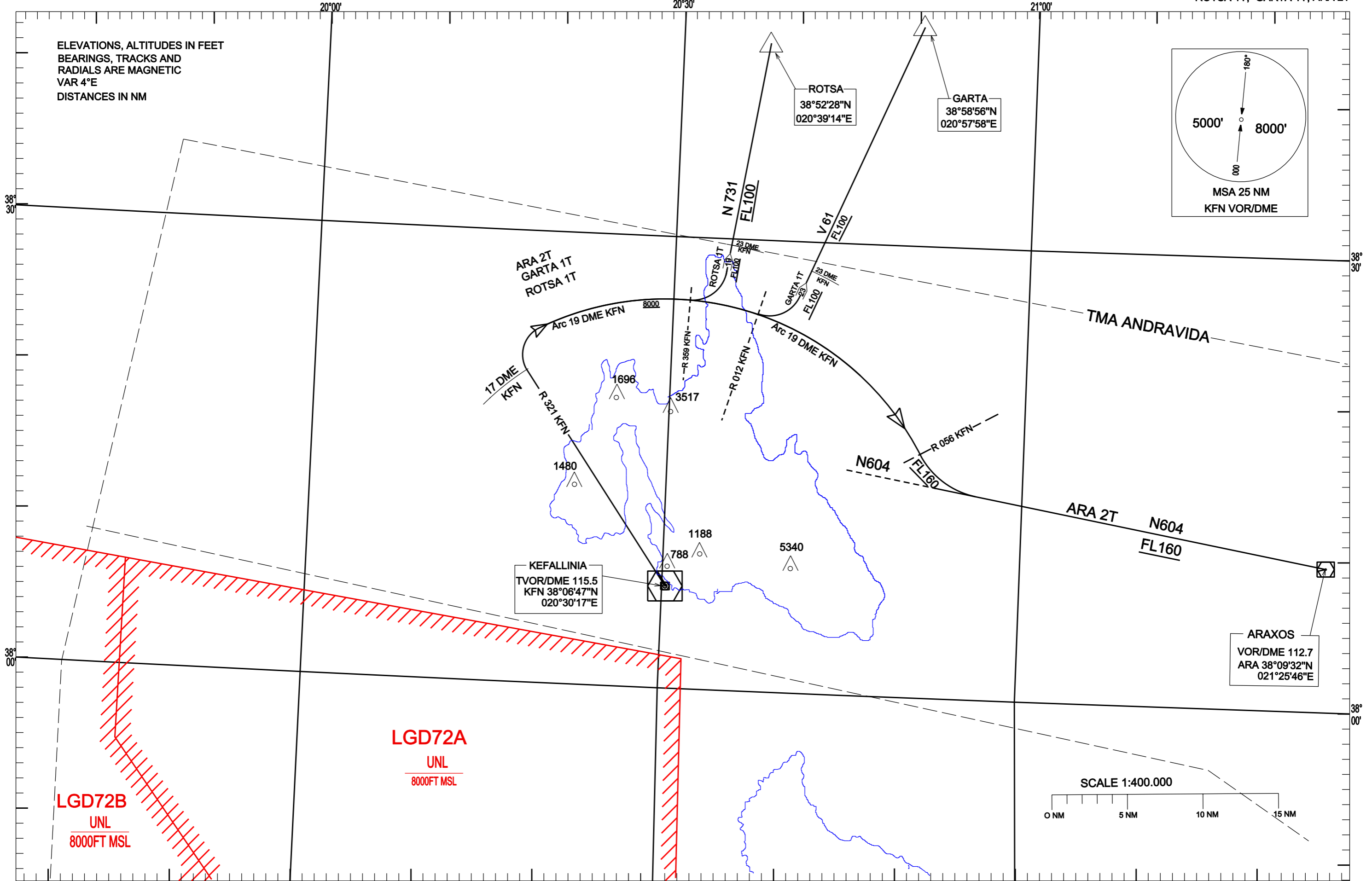
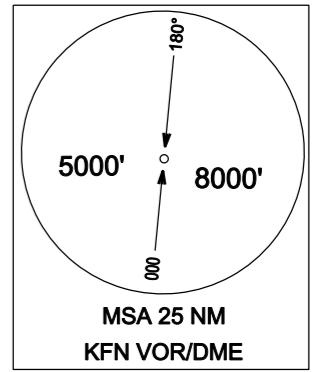


TRANSITION ALTITUDE
8000'

TWR 122.250, ANDRAVIDA APP 121.125

ELEVATIONS, ALTITUDES IN FEET
BEARINGS, TRACKS AND
RADIALS ARE MAGNETIC
VAR 4°E
DISTANCES IN NM



KEFALLINIA AIRPORT

KFN VOR/DME RWY 32

Supplementary SIDs : ARA 2T, ROTSA 1T, GARTA 1T

GENERAL:

- When for these SIDs an altitude higher than the transition altitude is designated, then ATC unit shall specify an equivalent flight level.
- For this SIDs a visual climb up to 200 ft is required and then continue with the minimum PDG (Procedure Design Gradient) as described in the following table.

DESIGNATOR	DESCRIPTION	MAX IAS/ BANK ANGLE	MIN CLIMB GRADIENT (PDG)	ALTITUDES
ARA 2T	“Climb on RDL 321 KFN. At RDL 321 KFN / 17 DME .Fix turn right, intercept and follow ARC 19DME KFN .Crossing RDL 056 KFN turn left to join AWY N604 to ARA.”		5.6 % (340 ft / NM) up to FL160 See Note	Cross RDL 056 KFN at FL160 or above. SeeNote
ROTSA 1T	“Climb on RDL 321 KFN. At RDL 321 KFN / 17 DME .Fix turn right, intercept and follow ARC 19DME KFN. Crossing RDL 359 KFN turn left, intercept and follow AWY N731 to ROTSA.”		5.6 % (340 ft / NM) up to FL100 or above	Cross RDL 352 KFN at 8000ft (QNH) or above. Cross RDL 359 KFN at FL100 or above.
GARTA 1T	“Climb on RDL 321 KFN. At RDL 321 KFN / 17 DME .Fix turn right, intercept and follow ARC 19DME KFN. Crossing RDL 012 KFN turn left, intercept and follow AWY V61 to GARTA.”		5 % (304 ft / NM) up to FL100 or above	Cross RDL 352 KFN at 8000ft (QNH) or above. Cross RDL 012 KFN at FL100 or above.

Note: For departures using AWY N604 as RNAV AWY (with MIN FL100) a PDG of 5,0% (304 ft/NM) is required with the restriction to cross RDL 056 KFN at FL100 or above.

PDG	GROUND SPEED	100	120	140	160	180	200
5.0%304FT/NM	ROC (FT/Min)	506	608	709	810	911	1013
5.6%340FT/NM	ROC(FT/Min)	567	681	794	907	1021	1134