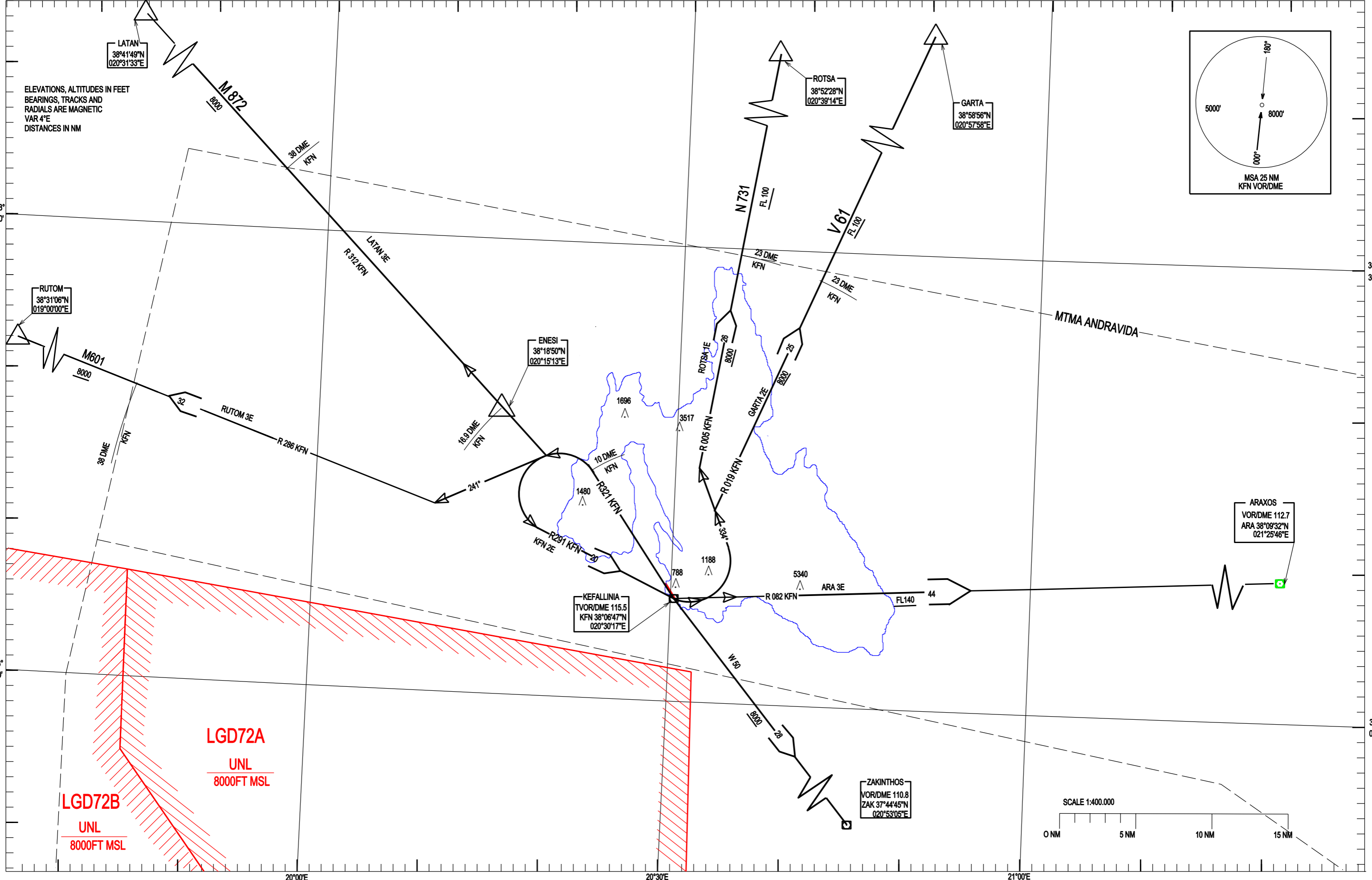


STANDARD DEPARTURE CHART INSTRUMENT (SID) - ICAO

TRANSITION ALTITUDE 8000 FT

TWR 122.250 ANDRAVIDA APP 121.125

KEFALLINIA VOR / DME Rwy 32 RUTOM 3E, LATAN 3E, KFN 2E, ROTSA 1E, GARTA 2E, ARA 3E



KEFALLINIA AIRPORT

KFN VOR/DME RWY 32

SIDs : ARA 3E, KFN 2E, ROTSA 1E, GARTA 2E, RUTOM 3E, LATAN 3E,

GENERAL:

- When for these SIDs an altitude higher than the transition altitude is designated, then ATC unit shall specify an equivalent flight level.
- For this SIDs a visual climb up to 200 ft is required and then continue with the minimum PDG (Procedure Design Gradient) as described in the following table.

DESIGNATOR	DESCRIPTION	MAX IAS/ BANK ANGLE	MIN CLIMB GRADIENT (PDG)	ALTITUDES
ARA 3E	“Climb on RDL 321 KFN. At RDL 321 KFN / 10 DME .Fix turn left, intercept and follow RDL 291 KFN to KFN. Then turn left, intercept and follow RDL 082 KFN and proceed to ARA.”	210KT/15 ⁰ until the turn at RDL 321 KFN / 10 DME .Fix is completed	5 % (304 ft / NM) up to FL090	Cross KFN at FL090 or above. Cross ARA FL 140 or above.
KFN 2E	“Climb on RDL 321 KFN .At RDL 321 KFN / 10 DME .Fix turn left, intercept and follow RDL 291 KFN to KFN and then to assigned route by ATC unit”	210KT/15 ⁰ until the turn at RDL 321 KFN / 10 DME .Fix is completed.	4.7 % (286 ft / NM) up to 8000ft QNH or above	Cross KFN at 8000ft (QNH) or above.
RO TSA 1E	“Climb on RDL 321 KFN. At RDL 321 KFN / 10 DME .Fix turn left, intercept and follow RDL 291 KFN to KFN. Then turn left to track 333 ⁰ , intercept and follow RDL 005 KFN to join AWY N 731 and proceed to ROTSA.”	210KT/15 ⁰ until the turn at RDL 321 KFN / 10 DME .Fix is completed. 230KT/25 ⁰ until the turn over KFN is completed.	4.7 % (286 ft / NM) up to FL100 or above	Cross KFN at 8000ft (QNH) or above. Cross RDL 005 KFN / 23DME .Fix at FL100 or above.
GARTA 2E	“Climb on RDL 321 KFN .At RDL 321 KFN / 10 DME .Fix turn left, intercept and follow RDL 291 KFN to KFN. Then turn left to track 333 ⁰ , intercept and follow RDL 019 KFN to join AWY V 61 and proceed to GARTA.”	210KT/15 ⁰ until the turn at RDL 321 KFN / 10 DME .Fix is completed. 230KT/25 ⁰ until the turn over KFN is completed.	4.7 % (286 ft / NM) up to FL100 or above	Cross KFN at 8000ft (QNH) or above. Cross RDL 019 KFN / 23DME .Fix at FL100 or above.
RUTOM 3E	“Climb on RDL 321 KFN. At RDL 321 KFN / 10 DME .Fix turn left to track 241 ⁰ , intercept and follow RDL 286 KFN to join AWY M 601 and proceed to RUTOM.”	210KT/15 ⁰ until the turn at RDL 321 KFN / 10 DME .Fix is completed.	4.7 % (286 ft/NM) up to 8000 ft (QNH)	Cross RDL 286 KFN / 38DME .Fix at 8000FT(QNH) or above.
LATAN 3E	“Climb on RDL 321 KFN. At RDL 321 KFN / 10 DME .Fix turn left, intercept and follow RDL 312 KFN to join AWY M 872 and proceed to LATAN.”	210KT/15 ⁰ until the turn at RDL 321 KFN / 10 DME .Fix is completed.	4.7 % (286 ft/NM) up to 8000 ft (QNH)	Cross RDL 312 KFN / 38DME .Fix at 8000FT(QNH) or above.

PDG	GROUND SPEED	100	120	140	160	180	200
5.0%304FT/NM	ROC (FT/Min)	506	608	709	810	911	1013
4.7%286FT/NM	ROC(FT/Min)	476	571	666	762	856	952