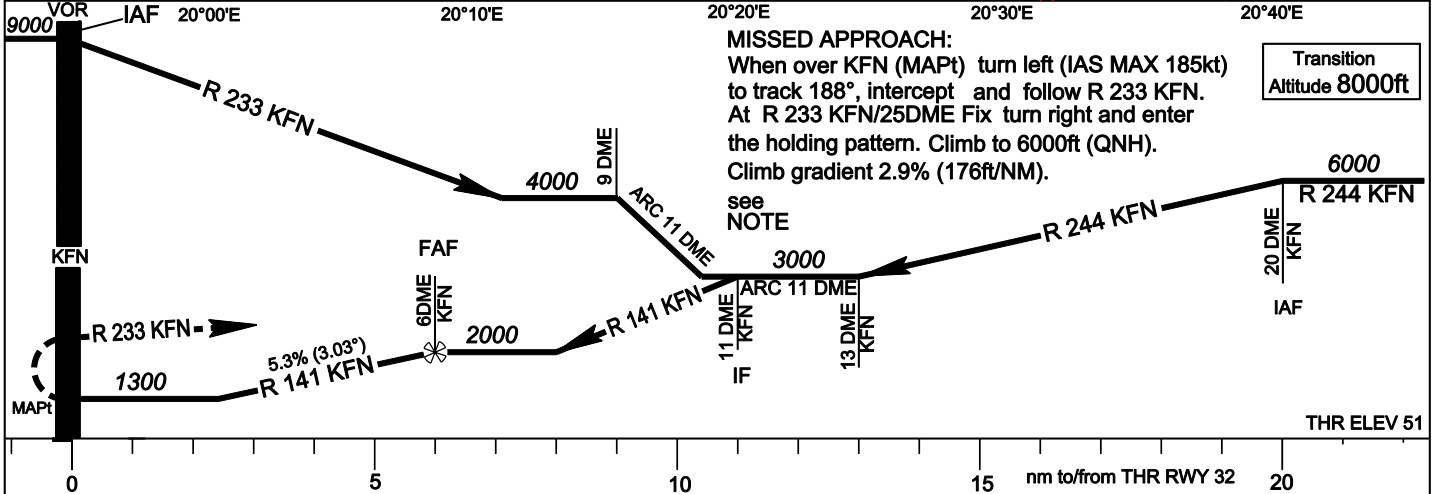
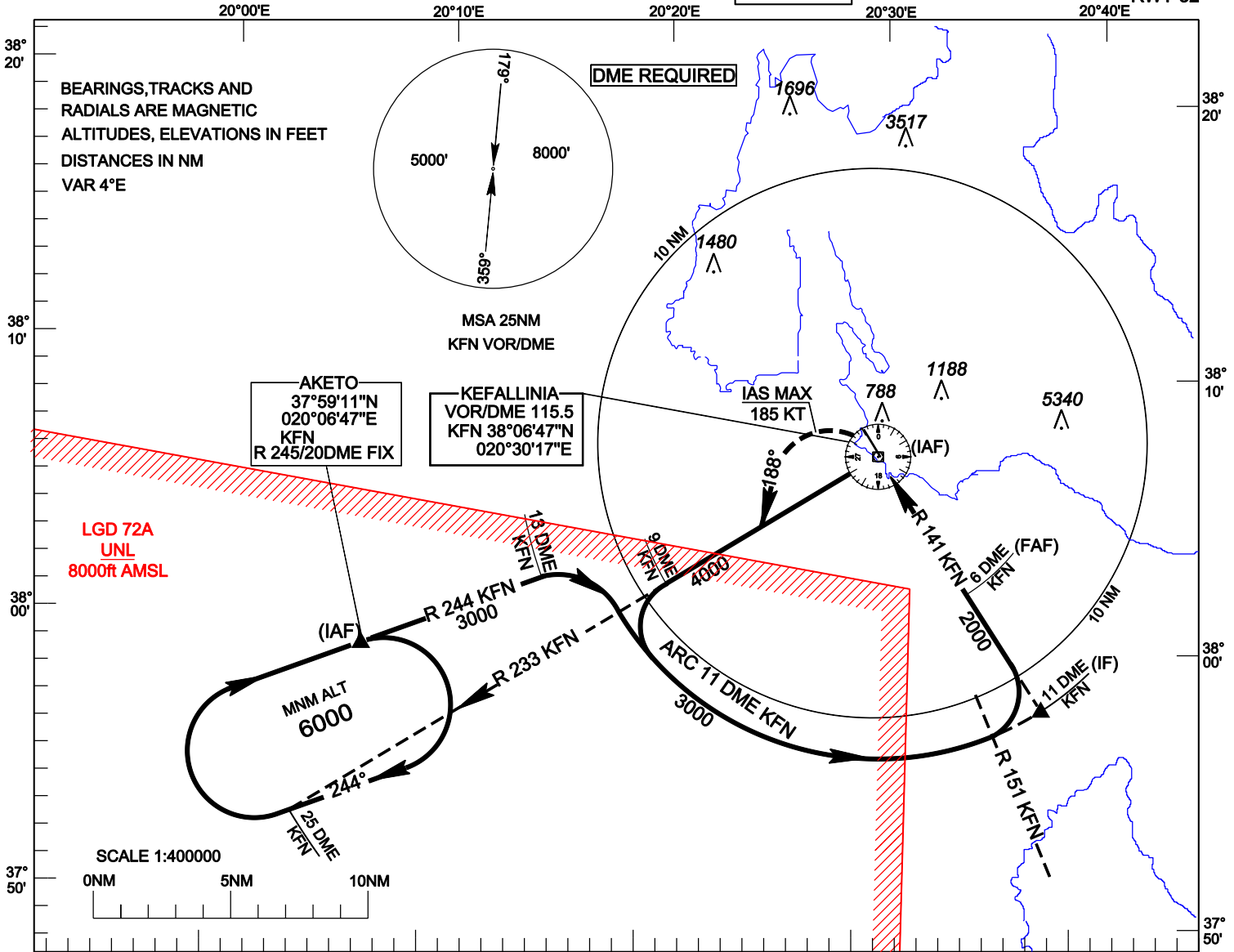


**INSTRUMENT APPROACH CHART - ICAO**

**AERODROME ELEV 60ft  
HEIGHTS RELATED TO  
THR RWY 32 - ELEV 51 ft**

**TWR 122.250  
ATIS 126.450**

**KEFALLINIA  
VORY  
RWY 32**



OCA/H	A	B	C	D	Altitude (Height) on Final Approach				Rate of descent					
Straight-in approach	1300 (1249)				5 DME	4 DME	3 DME	2 DME	ft/min	537	644	752	859	967
Circling West of RWY	1300 (1240)				1678 (1627)	1356 (1305)	1034 (983)	712 (661)						

NOTE: Minimum OCA (H) for aircraft utilizing a 2.5% missed approach climb gradient.

OCA (H)	A	B	C	D
Straight-in approach	1900 (1849)			
Circling West of RWY	1900 (1849)			

**Coordinates of significant points**  
 IF (R 141 KFN 11DME Fix): 37°57'43.87"N 020°38'16.82"E  
 FAF (R 141 KFN 6DME Fix): 38°01'50.68"N 020°34'38.95"E  
 Secondary Fix of AKETO Holding: (R 233KFN 25 DME Fix): 37°52'56"N 020°03'52"E