

AERODROME CHART-ICAO

ARP 352023N 0251049E

AD ELEV 35M / 115FT

IRAKLION / Nikos Kazantzakis Airport

-ELEVATIONS AND DIMENSIONS ARE IN METRES
-BEARINGS ARE MAGNETIC
-COORDINATES IN WGS' 84

VAR 3° 53' E-01/01/2013
Annual Rate of Change 5.53" E

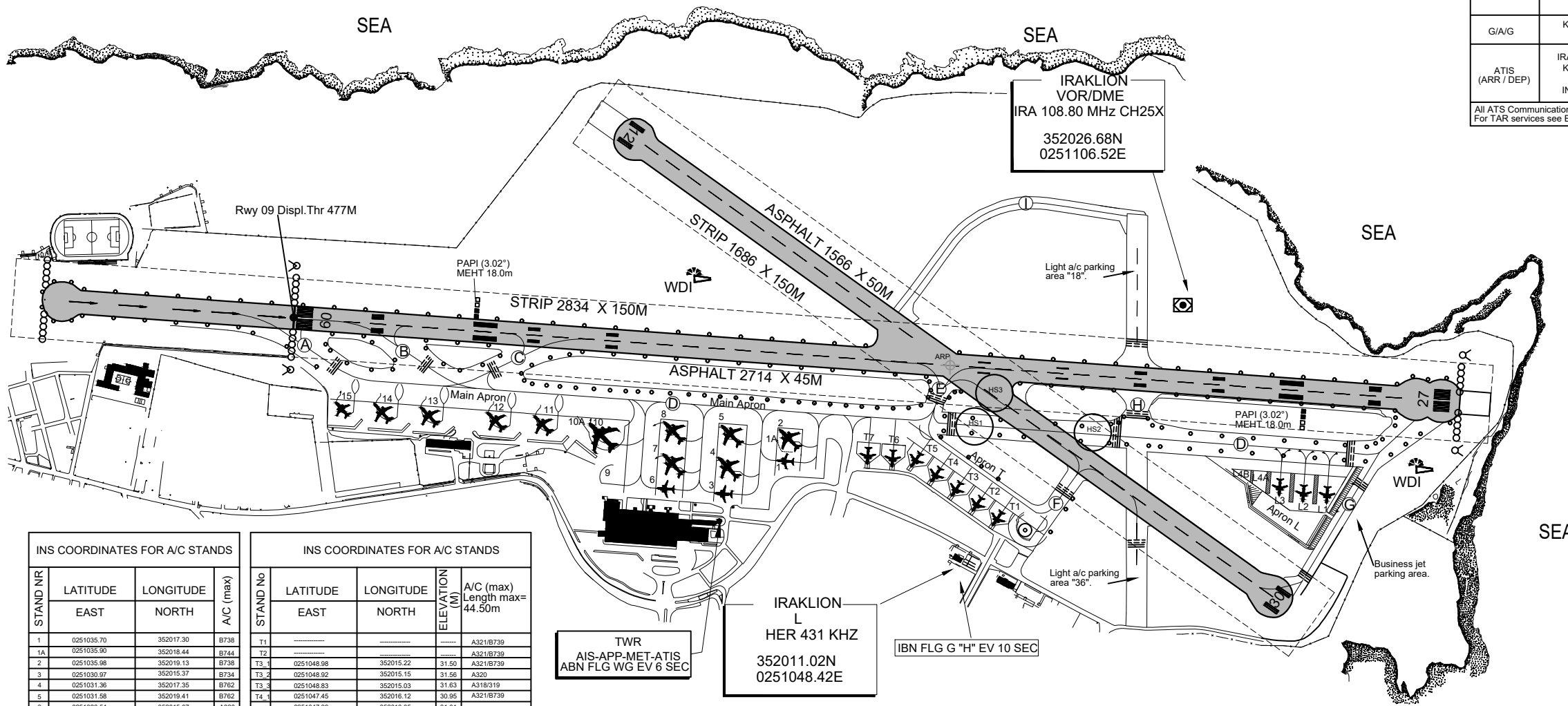
RUNWAY LIGHTING	
RWY 09-27 RWY EDGE Lights (Coded, LIM) RWY END Lights (Red) RWY THR Lights (Green), RWY 09 WBARS, RTIL	
RWY 12-30 No lighting facilities	
TAXIWAY LIGHTING	
TWY EDGE Lights (Blue)	
APRON LIGHTING	
Floodlights	
PAPI	
PAPI system RWY 27 serviceable in azimuth coverage not more than 10° either side of the extended runway centre line.	

RWY	DIRECTION	THRESHOLD	THR Elevation (AMSL) GUND Elevation	BEARING STRENGTH
09	91°	352026.55N 0250959.08E	23.68 24.19	PCN 36/F/B/X/U Asphalt
27	271°	352020.44N 0251127.36E	24.74 24.22	
12	122°	352037.99N 0251024.09E	15.29 24.27	
30	302°	352007.89N 0251114.05E	35.09 24.18	

TWYs:
Width: 23 M, TWY "G" 16M
Surface: asphalt.
Bearing strength: PCN 36/F/B/X/U, except part of TWY "H" between TWY "D" and RWY 12/30 pavement evaluation pending.
TWYL "G" LCN 45 (MIL or civil light aircraft)
TWYL "I" (MIL aircraft only)
Operations with code letter E aircrafts along with all B767 aircraft series not allowed at TWY "C" and "H"
Apron type of surface - Bearing strength: Asphalt - PCN 36/F/B/X/U

ATS COMMUNICATIONS FACILITIES				
SERVICE DESIGNATION	CALL SIGN	FREQUENCY/ VHF CH	OPERATIONAL HOURS	REMARKS
APP	IRAKLION APPROACH	123.975	H24	Primary freq cover. FL 200/ 90NM Coverage FL 250/ 50NM MIL RGA Emergency MIL Emergency
		118.025	H24	
TAR	IRAKLION RADAR	123.975	H24	Coverage FL 200/ 90NM MIL
		362.300 MHz	H24	Coverage FL 250/ 50NM
TWR	KAZANTZAKIS TOWER	120.850	H24	Primary freq cover. FL 40/ 25NM Coverage FL 40/ 25NM RGA MIL RGA Emergency MIL Emergency
		129.175	H24	
		122.100	H24	
G/A/G	KAZANTZAKIS RADIO	121.500	H24	Cover. Aerodrome Surface / 5NM ACFT Start up & Taxi Clearance
		257.800 MHz	H24	
G/A/G	KAZANTZAKIS GROUND	129.175	H24	Cover. Aerodrome Surface / 5NM ACFT Start up & Taxi Clearance
		121.700	H24	
G/A/G	KAZANTZAKIS RADIO	5637 kHz	H24: 0400-1700	Primary Primary
		2989 kHz	H24: 1700-0400	
ATIS (ARR / DEP)	IRAKLION NIKOS KAZANTZAKIS AIRPORT INFORMATION	127.550	a) From 1st APR to 31st OCT, H24 b) From 1st NOV to 31st MAR: daily 0400 - 2100	Coverage FL 200/ 60NM

All ATS Communications Facilities under responsibility of CAA.
For TAR services see ENR 1.6 & LGIR AD 2.22.4, for ATIS see also ENR 1.1.1.8.3.3



Hot Spot HS1 CONFUSING POINT: APPROACHING RWY
Hot Spot HS2 CONFUSING POINT: APPROACHING RWY
Hot Spot HS3 CONFUSING POINT: CROSSING RWY

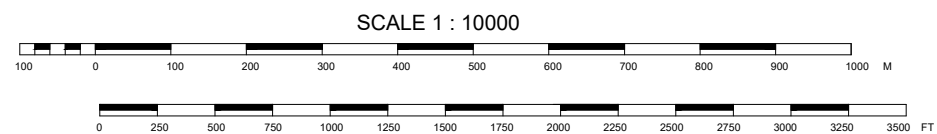
INS COORDINATES FOR A/C STANDS			
STAND NR	LATITUDE EAST	LONGITUDE NORTH	A/C (max)
1	0251035.70	352017.30	B738
1A	0251035.90	352018.44	B744
2	0251035.98	352019.13	B738
3	0251030.97	352015.37	B734
4	0251031.38	352017.35	B762
5	0251031.58	352019.41	B762
6	0251026.54	352016.67	A320
7	0251026.89	352017.30	B762
8	0251027.14	352018.73	B762
9	0251022.27	352016.04	---
10	0251022.71	352019.15	A300
10A	0251021.71	352019.59	B744
11	0251017.37	352020.16	B752
12	0251013.80	352020.42	B752
13	0251008.69	352020.78	B752
14	0251005.27	352021.01	B752
15	0251002.30	352021.19	A320

INS COORDINATES FOR A/C STANDS				
STAND No	LATITUDE EAST	LONGITUDE NORTH	ELEVATION (M)	A/C (max) Length max=44.50m
T1	---	---	---	A321/B739
T2	---	---	---	A321/B739
T3_1	0251048.98	352015.22	31.50	A321/B739
T3_2	0251048.92	352015.15	31.56	A320
T3_3	0251048.83	352015.03	31.63	A318/319
T4_1	0251047.45	352016.12	30.95	A321/B739
T4_2	0251047.39	352016.05	31.01	A320
T4_3	0251047.29	352016.94	31.09	A318/319
T5_1	0251045.91	352017.03	30.50	A321/B739
T5_2	0251045.85	352016.96	30.56	A320
T5_3	0251045.76	352016.84	30.64	A318/319
T6_1	0251044.32	352017.19	30.48	A321/B739
T6_2	0251044.31	352017.10	30.54	A320
T6_3	0251044.29	352016.97	30.64	A318/319
T7_1	0251042.44	352017.33	30.75	A321/B739
T7_2	0251042.43	352017.24	30.80	A320
T7_3	0251042.41	352017.11	30.88	A318/319

IRAKLION L
HER 431 KHZ
352011.02N
0251048.42E

TWR
AIS-APP-MET-ATIS
ABN FLG WG EV 6 SEC

IBN FLG G "H" EV 10 SEC



CHANGE: Twys, ATS COMMUNICATIONS FACILITIES.