

STANDARD DEPARTURE CHART INSTRUMENT (SID) - ICAO

ATHINAI/ELEFTHERIOS VENIZELOS RWY03L (NO INITIAL TRACK GUIDANCE) SPA VOR/DME - ATV VOR/DME

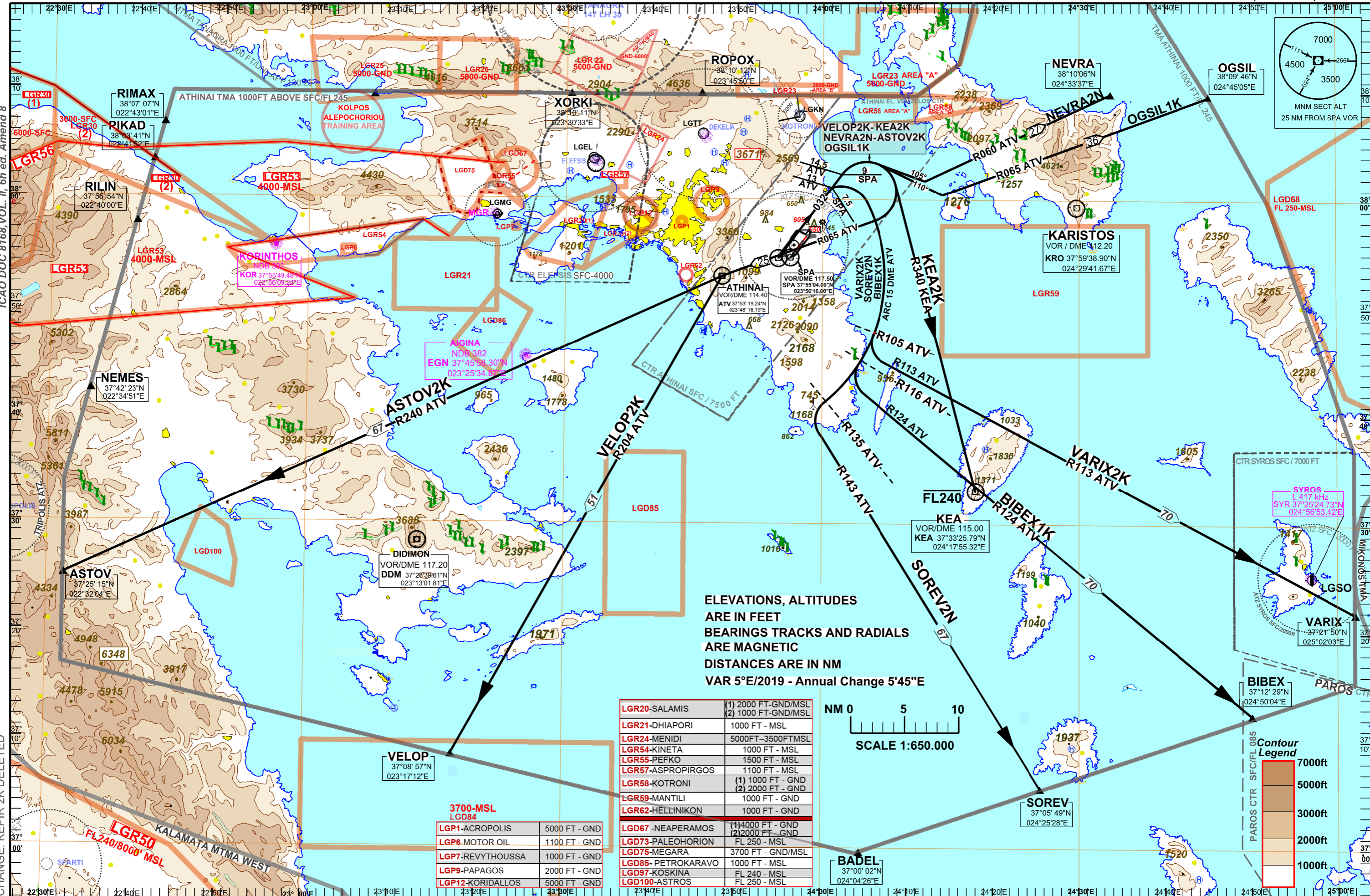
TRANSITION ALTITUDE 9000 ft

ATIS 136.125

TOWER WEST 136.275
TOWER EAST 118.625

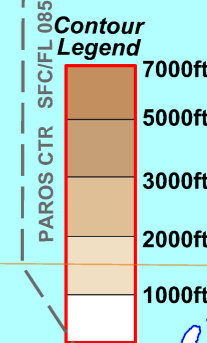
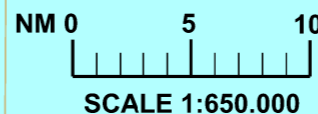
ARRIVAL WEST 119.100
ARRIVAL EAST 126.755

ASTOV2K, KEA2K, BIBEX1K, NEVRA2N, SOREV2N, VARIX2K, VELOP2K, OGSIL1K



LGR20-SALAMIS	(1) 2000 FT-GND/MSL (2) 1000 FT-GND/MSL
LGR21-DHIAPORI	1000 FT - MSL
LGR24-MENIDI	5000FT-3500FTMSL
LGR54-KINETA	1000 FT - MSL
LGR55-PEFKO	1500 FT - MSL
LGR57-ASPROPIRGOS	1100 FT - MSL
LGR58-KOTRONI	(1) 1000 FT - GND (2) 2000 FT - GND
LGR59-MANTILI	1000 FT - GND
LGR62-HELLINIKON	1000 FT - GND
LGD67-NEAPERAMOS	(1)4000 FT - GND (2)2000 FT - GND
LGD73-PALEOCHORION	FL 250 - MSL
LGD75-MEGARA	3700 FT - GND/MSL
LGD85- PETROKARAVO	1000 FT - MSL
LGD97-KOSKINA	FL 240 - MSL
LGD100-ASTROS	FL 250 - MSL

3700-MSL LGD84	
LGP1-ACROPOLIS	5000 FT - GND
LGP6-MOTOR OIL	1100 FT - GND
LGP7-REVYTHOUSSA	1000 FT - GND
LGP9-PAPAGOS	2000 FT - GND
LGP12-KORIDALLOS	5000 FT - GND



ICAO DOC 8168, VOL. II, 6th ed. Amend 8

CHANGE: KEP1R 2K DELETED

ATHINAI / "ELEFThERIOS VENIZELOS"**SPA VOR/DME - ATV VOR/DME RWY 03L**

SIDs : VARIX2K, NEVRA2N, OGSIL1K, ASTOV2K, VELOP2K, SOREV2N, KEA2K, BIBEX1K.

GENERAL: These SIDs are **not** available for initial flight planning.

DESIGNATOR	DESCRIPTION	MAXIMUM IAS / MINIMUM BANK ANGLE	PROCEDURE DESIGN GRADIENT	LEVEL RESTRICTIONS
VARIX 2K	Climb on runway axis (032°). At 7.5 DME/SPA (or 13 DME/ATV) turn right, intercept and follow Arc 15 DME ATV. When crossing RDL 105 ATV turn left, intercept RDL 113 ATV inbound to VARIX.	220kt / 15°	6% (365 ft/NM).	Nil.
NEVRA 2N	Climb on runway axis (032°). At 9 DME/SPA (or 14.5 DME/ATV) turn right on track 105°. Intercept RDL 060 ATV inbound to NEVRA.	220kt / 15°	6% (365 ft/NM).	Nil.
OGSIL 1K	Climb on runway axis (032°). At 9 DME/SPA (or 14.5 DME/ATV) turn right on track 110°. Intercept RDL 065 ATV inbound to OGSIL.	220kt / 15°	6% (365 ft/NM).	Nil.
ASTOV 2K	Climb on runway axis (032°). At 9 DME/SPA (or 14.5 DME/ATV) turn right, intercept RDL 065 ATV inbound to ATV. At ATV intercept RDL 240 ATV inbound to ASTOV.	220kt / 15°	6% (365 ft/NM).	Nil.
VELOP 2K	Climb on runway axis (032°). At 9 DME/SPA (or 14.5 DME/ATV) turn right, intercept RDL 065 ATV inbound to ATV. At ATV turn left, intercept RDL 204 ATV inbound to VELOP.	220kt / 15°	6% (365 ft/NM).	Nil.
SOREV 2N	Climb on runway axis (032°). At 7.5 DME SPA (or 13 DME/ATV) turn right, intercept and follow Arc 15 DME ATV. When crossing RDL 135 ATV turn left, intercept RDL 143 ATV inbound to SOREV.	220kt / 15°	6% (365 ft/NM).	Nil.
KEA 2K	Climb on runway axis (032°). At 9 DME/SPA (or 14.5 DME / ATV) turn right, intercept RDL 340 KEA inbound to KEA.	220kt / 15°	6% (365 ft/NM).	Cross KEA at or below FL240.
BIBEX 1K (This SID should be used for destination PAROS AIRPORT)	Climb on runway axis (032°). At 7.5 DME SPA (or 13 DME/ATV) turn right, intercept and follow Arc 15 DME ATV. When crossing RDL 116 ATV turn left, intercept RDL 124 ATV inbound to BIBEX.	220kt / 15°	6% (365 ft/NM).	Nil.