

STANDARD DEPARTURE CHART INSTRUMENT (SID) - ICAO

ATHINAI/ELEFTHERIOS VENIZELOS RWY03L (BASED ON SAT VOR)

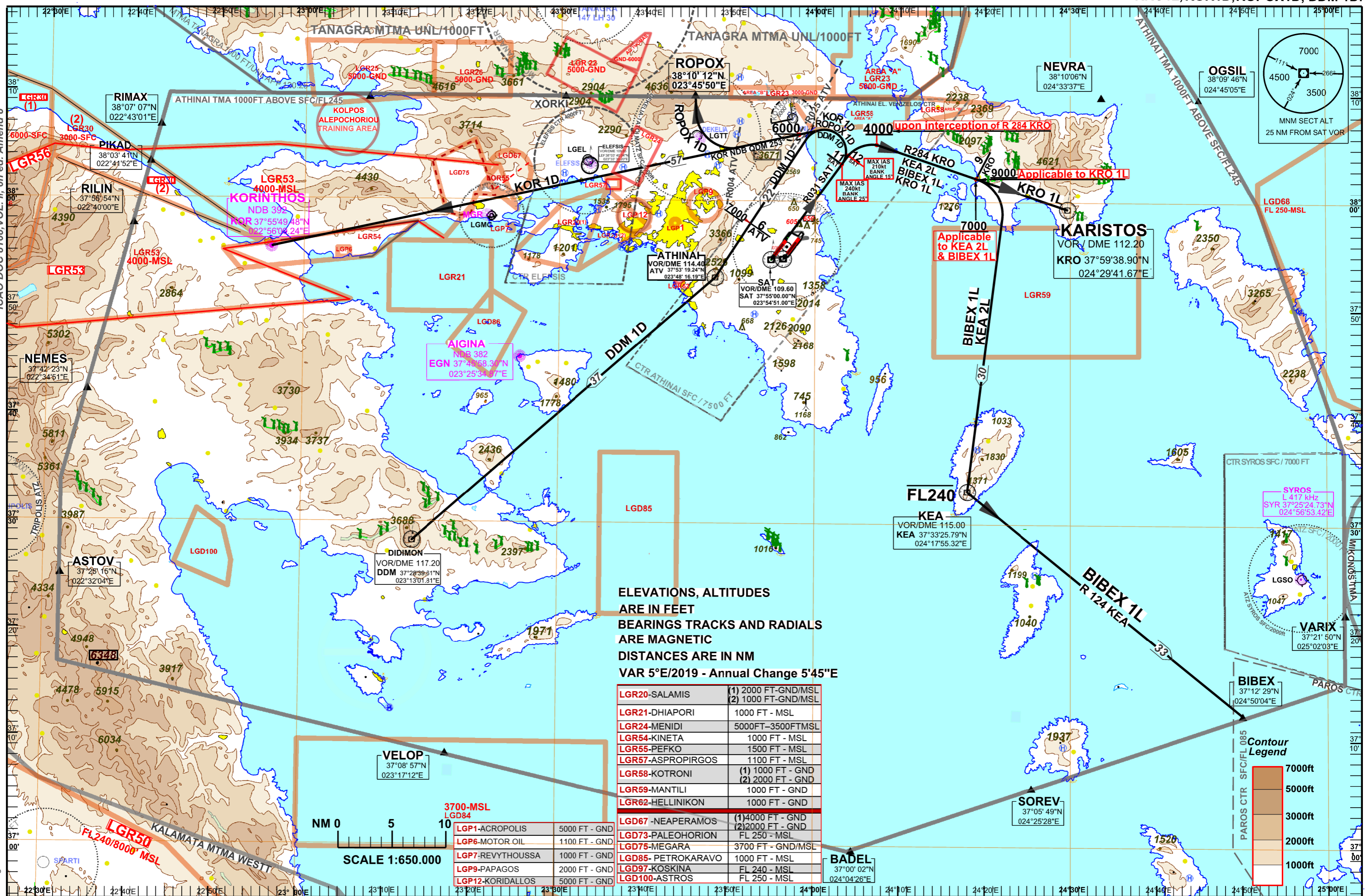
TRANSITION ALTITUDE 9000 ft

ATIS 136.125

TOWER WEST 136.275  
TOWER EAST 118.625

ARRIVAL WEST 119.100  
ARRIVAL EAST 126.575

BIBEX1L,KEA2L, KRO1L, KOR1D,ROPOX1D, DDM 1D.



ELEVATIONS, ALTITUDES ARE IN FEET  
BEARINGS TRACKS AND RADIALS ARE MAGNETIC  
DISTANCES ARE IN NM  
VAR 5°E/2019 - Annual Change 5'45\"/>

LGR20-SALAMIS	(1) 2000 FT-GND/MSL (2) 1000 FT-GND/MSL
LGR21-DHIAPORI	1000 FT - MSL
LGR24-MENIDI	5000FT-3500FTMSL
LGR54-KINETA	1000 FT - MSL
LGR55-PEFKO	1500 FT - MSL
LGR57-ASPROPIRGOS	1100 FT - MSL
LGR58-KOTRONI	(1) 1000 FT - GND (2) 2000 FT - GND
LGR59-MANTILI	1000 FT - GND
LGR62-HELLINIKON	1000 FT - GND
LGD67-NEAPERAMOS	(1)4000 FT - GND (2)2000 FT - GND FL 250 - MSL
LGD73-PALEOHORION	FL 250 - MSL
LGD75-MEGARA	3700 FT - GND/MSL
LGD85- PETROKARAVO	1000 FT - MSL
LGD97-KOSKINA	FL 240 - MSL
LGD100-ASTROS	FL 250 - MSL
LGP1-ACROPOLIS	5000 FT - GND
LGP6-MOTOR OIL	1100 FT - GND
LGP7-REVYTHOUSSA	1000 FT - GND
LGP9-PAPAGOS	2000 FT - GND
LGP12-KORIDALLOS	5000 FT - GND

Changes: KOR NDB QDM

**ATHINAI / “ELEFThERIOS VENIZELOS“  
SAT VOR/DME RWY 03L**

**SIDs : ROPOX 1D,KOR 1D,DDM 1D,KRO 1L,KEA 2L, BIBEX 1L**

**GENERAL:**

Level restrictions are applied in case of radar failure (RCF), and if not otherwise instructed by ATC, in order to secure vertical separation when flying on these SIDs and on specifically related SIDs from parallel RWY 03R.

DESIGNATOR	DESCRIPTION	MAXIMUM IAS / MINIMUM BANK ANGLE	PROCEDURE DESIGN GRADIENT	LEVEL RESTRICTIONS
<b>ROPOX 1D</b>	Climb on RDL 031 SAT. At 11 DME SAT turn left inbound to KOR. When crossing RDL 004 ATV turn right inbound to ROPOX.	240kt / 25° during initial turn for ATC constraints (to avoid TANAGRA MTMA).	PDG: <b>5,7%</b> (346ft/NM) is required up to 5200ft due to obstacle 3635ft at a distance of 8,48 NM and on a bearing 335° from the DER of RWY 03L	Cross RDL 025 ATV at 6000ft or above (due to Kotroni ATZ).
<b>KOR 1D</b>	Climb on RDL 031 SAT. At 11 DME SAT turn left (KOR NDB QDM 253) inbound to KOR.	240kt / 25° during initial turn for ATC constraints (to avoid TANAGRA MTMA).	PDG: <b>5,7%</b> (346ft/NM) is required up to 5200ft due to obstacle 3635ft at a distance of 8,48 NM and on a bearing 335° from the DER of RWY 03L	Cross RDL 025 ATV at 6000ft or above (due to DEKELIA ATZ).
<b>DDM 1D</b>	Climb on RDL 031 SAT. At 11 DME SAT turn left inbound to ATV and then to DDM.	240kt / 25° during initial turn for ATC constraints (to avoid TANAGRA MTMA).	PDG: <b>5,7%</b> (346ft/NM) is required up to 5200ft due to obstacle 3635ft at a distance of 8,48 NM and on a bearing 335° from the DER of RWY 03L	Cross 6 DME ATV 7000ft or above.
<b>KRO 1L</b>	Climb on RDL 031 SAT. At 12 DME SAT turn right, intercept at 4000ft or above RDL 284 KRO inbound to KRO.	210kt / 15°	PDG: <b>4%</b> (243ft/NM) is required up to 700ft due to a terrain peak 605ft at a distance of 1,7 NM and on a bearing of 038° from the DER of RWY 03L	Cross 9DME inbound to KRO at 9000ft or above.
<b>KEA 2L</b>	Climb on RDL 031 SAT. At 12 DME SAT turn right, intercept at 4000ft or above RDL 284 KRO inbound to KRO. At 9 DME inbound to KRO turn right to KEA.	210kt / 15°	PDG: <b>4%</b> (243ft/NM) is required up to 700ft due to a terrain peak 605ft at a distance of 1,7 NM and on a bearing of 038° from the DER of RWY 03L.	Cross 9DME inbound to KRO at 7000ft or above. Cross KEA not above FL240.
<b>BIBEX 1L</b> (This SID should be used for destination PAROS AIRPORT)	Climb on RDL 031 SAT. At 12 DME SAT turn right, intercept at 4000ft or above RDL 284 KRO inbound to KRO. At 9 DME inbound to KRO turn right to KEA. After KEA intercept RDL 124 KEA and proceed to BIBEX.	210kt / 15°	PDG: <b>4%</b> (243ft/NM) is required up to 700ft due to a terrain peak 605ft at a distance of 1,7 NM and on a bearing of 038° from the DER of RWY 03L	Cross 9DME inbound to KRO at 7000ft or above. Cross KEA not above FL240.