

TRANSITION ALTITUDE 9000 ft

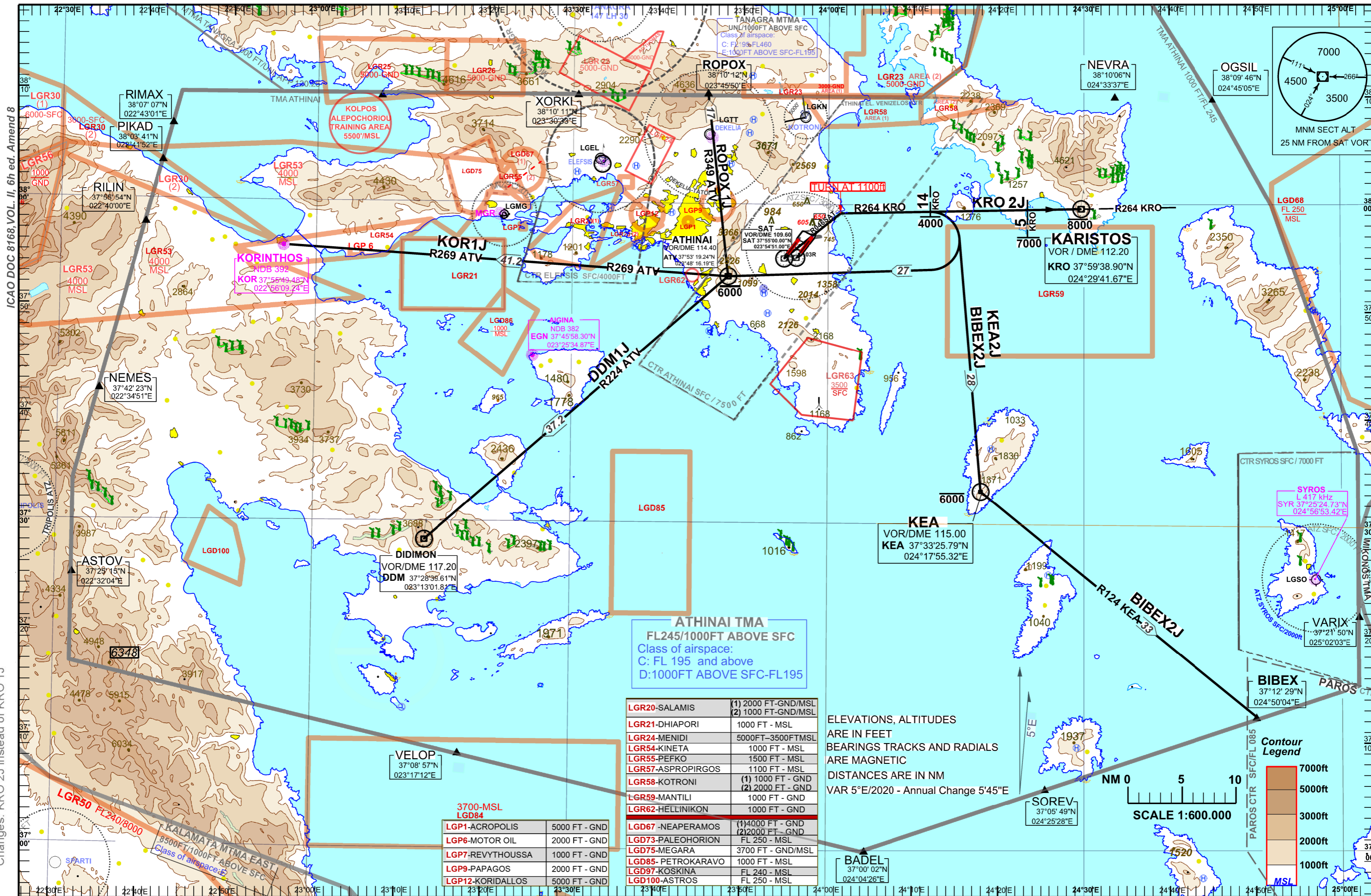
ATIS 136.125

TOWER WEST 136.275
TOWER EAST 118.625

ARRIVAL WEST 132.975
ARRIVAL EAST 126.575

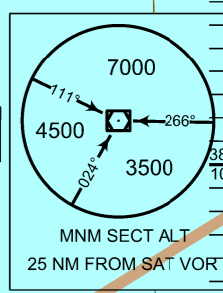
ATHINAI DEPARTURE 128.950

BIBEX2J, DDM1J, KOR1J, KRO2J, KEA2J, ROPOX1J



ICAO DOC 8168, VOL. II, 6th ed. Amend 8

Changes: KRO 2J instead of KRO 1J

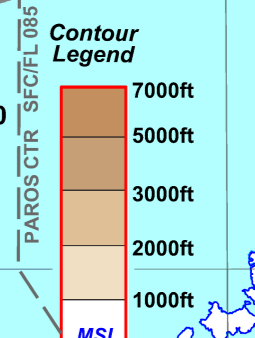


ATHINAI TMA
FL245/1000FT ABOVE SFC
Class of airspace:
C: FL 195 and above
D: 1000FT ABOVE SFC-FL195

LGR20-SALAMIS	(1) 2000 FT-GND/MSL (2) 1000 FT-GND/MSL
LGR21-DHIAPORI	1000 FT - MSL
LGR24-MENIDI	5000FT-3500FTMSL
LGR54-KINETA	1000 FT - MSL
LGR55-PEFKO	1500 FT - MSL
LGR57-ASPROPIRGOS	1100 FT - MSL
LGR58-KOTRONI	(1) 1000 FT - GND (2) 2000 FT - GND
LGR59-MANTILI	1000 FT - GND
LGR62-HELLINIKON	1000 FT - GND
LGD67-NEAPERAMOS	(1) 1000 FT - GND (2) 2000 FT - GND
LGD73-PALEOHORION	FL 250 - MSL
LGD75-MEGARA	3700 FT - GND/MSL
LGD85-PETROKARAVO	1000 FT - MSL
LGD97-KOSKINA	FL 240 - MSL
LGD100-ASTROS	FL 250 - MSL

ELEVATIONS, ALTITUDES
ARE IN FEET
BEARINGS TRACKS AND RADIALS
ARE MAGNETIC
DISTANCES ARE IN NM
VAR 5°E/2020 - Annual Change 5'45"E

SCALE 1:600.000



**ATHINAI / “ELEFThERIOS VENIZELOS“
SAT VOR/DME RWY 03R****SIDs : KRO 2J, DDM 1J, KOR 1J, KEA 2J, ROPOX 1J, BIBEX 2J.****GENERAL:****Level restrictions (upper limits) are applied in case of radar failure, RCF and if not otherwise instructed by ATC, in order to secure vertical separation when flying on these SIDs, and on specifically related SIDs from parallel RWY 03L**

DESIGNATOR	DESCRIPTION	MAXIMUM IAS / MINIMUM BANK ANGLE	PROCEDURE DESIGN GRADIENT	LEVEL RESTRICTIONS
KRO 2J	Climb on RDL 046 SAT to 1100ft. At 1100ft turn right, intercept RDL 264 KRO inbound to KRO.	210kt / 15° for initial turn.	6.6% (401ft/NM) up to 800ft due to terrain located at about 2300m NE of DER at elevation of about 650ft.	Cross 14DME inbound to KRO at or below 4000ft. Cross 5 DME inbound to KRO at or below 7000ft. Cross KRO at or below 8000ft.
DDM 1J	Climb on RDL 046 SAT to 1100ft. At 1100ft turn right, intercept RDL 264 KRO inbound to KRO. At 14DME inbound to KRO turn right inbound to ATV. Intercept RDL 224 ATV inbound DDM.	210kt / 15° for initial turn.	6.6 % (401ft/NM) up to 800ft due to terrain located at about 2300m NE of DER at elevation of about 650ft.	Cross 14DME inbound to KRO at or below 4000ft. Cross ATV at or below 6000ft.
KOR 1J	Climb on RDL 046 SAT to 1100ft. At 1100ft turn right, intercept RDL 264 KRO inbound to KRO. At 14DME inbound to KRO turn right inbound to ATV. Intercept RDL 269 ATV inbound to KOR.	210kt / 15 ° for initial turn.	6.6 % (401ft/NM) up to 800ft due to terrain located at about 2300m NE of DER at elevation of about 650ft.	Cross 14DME inbound to KRO at or below 4000ft. Cross ATV at or below 6000ft.
KEA 2J	Climb on RDL 046 SAT to 1100ft. At 1100ft turn right, intercept RDL 264 KRO inbound to KRO. At 14DME inbound to KRO turn right inbound to KEA	210kt / 15 ° for initial turn.	6.6 % (401ft/NM) up to 800ft due to terrain located at about 2300m NE of DER at elevation of about 650ft.	Cross 14DME inbound to KRO at or below 4000ft. Cross KEA at or below 6000ft.
ROPOX 1J	Climb on RDL 046 SAT to 1100ft. At 1100ft turn right, intercept RDL 264 KRO inbound to KRO. At 14DME inbound to KRO turn right inbound to ATV. At ATV intercept RDL 349 ATV inbound to ROPOX.	210kt / 15° for initial turn.	6.6 % (401ft/NM) up to 800ft due to terrain located at about 2300m NE of DER at elevation of about 650ft.	Cross 14DME inbound to KRO at or below 4000ft. Cross ATV at or below 6000ft.
BIBEX 2J (This SID should be used for destination PAROS AIRPORT)	Climb on RDL 046 SAT to 1100ft. At 1100ft turn right, intercept RDL 264 KRO inbound to KRO. At 14DME inbound to KRO turn right inbound to KEA. At KEA intercept RDL 124 KEA to BIBEX.	210kt / 15 ° for initial turn.	6.6 % (401ft/NM) up to 800ft due to terrain located at about 2300m NE of DER at elevation of about 650ft.	Cross 14DME inbound to KRO at or below 4000ft. Cross KEA at or below 6000ft.